

SHARP®

AR-C200P



User's Guide

Macintosh®

Every effort has been made to ensure that the information in this document is complete, accurate, and up-to-date. The manufacturer assumes no responsibility for the results of errors beyond its control. The manufacturer also cannot guarantee that changes in software and equipment made by other manufacturers and referred to in this Guide will not affect the applicability of the information in it. Mention of software products manufactured by other companies does not necessarily constitute endorsement by the manufacturer.

While all reasonable efforts have been made to make this document as accurate and helpful as possible, we make no warranty of any kind, expressed or implied, as to the accuracy or completeness of the information contained herein.

Copyright 2003, Sharp Electronics Corporation and its suppliers.



As an ENERGY STAR[®] Program Participant, the manufacturer has determined that this product meets the ENERGY STAR guidelines for energy efficiency.

This product complies with the requirements of the Council Directives 89/336/EEC (EMC) and 73/23/EEC (LVD) as amended where applicable on the approximation of the laws of the member states relating to electromagnetic compatibility and low voltage.

ENERGY STAR is a registered trademark of the United States Environmental Protection Agency.

Hewlett-Packard, HP, and LaserJet are registered trademarks of Hewlett-Packard Company.

Apple, Macintosh and Mac OS are registered trademarks of Apple Computers Inc.

Other product names and brand names are registered trademarks or trademarks of their proprietors.

59356701

Notes, Cautions and Warnings

NOTE

A note appears in this manual like this. A note provides additional information to supplement the main text.

CAUTION!

A caution appears in this manual like this. A caution provides additional information which, if ignored, may result in equipment malfunction or damage.

WARNING!

A warning appears in this manual like this. A warning provides additional information which, if ignored, may result in a risk of personal injury.

Important!

An Important box appears in the manual like this. An important box provides information which can impact the usability of that particular printer function.

Contents

Introduction	7
Features	7
How To Use This Manual	8
Getting Started	10
Unpacking	10
CD Contents	11
Printer Location	11
Printer Components	12
Setting up	15
Packaging and Protective Sheet Removal	15
Toner Cartridge Installation	19
Loading Paper	23
Manual Feed	27
Power Connection	28
Control Panel	29
Menu Settings	31
Media Recommendations	36
Paper Feed and Exit	38
Printer Settings	40
List of User Menu Settings	41
List of Administrator Menu Settings	65
Setting Color Tuning from the Front Panel	68
Switching Off	71
Interfaces	72
Macintosh OS 8.6-9.2.2	74
Printer Driver	74
Changing the PostScript Printer Description (PPD) File	74
Activating Optional Trays in the Driver	75
Activating the Optional Duplex Unit in the Driver	76
Activating the Optional Hard Disk Drive in the Driver	77
Activating Added Optional Memory in the Driver	78
Operation	79
Color Print Matching	79
Choosing a Color Matching Method	82
Color Option	84
Job Option	89
Job Type Plug-in	92
Printing Using Special Features	99

Utilities	103
General Information	103
Installing the Utilities	104
Fonts Downloader	105
Color Swatch Utility	106
Net Utility for EtherTalk	108
Macintosh OS 10.1.5	111
Printer Driver	111
Adjusting options	111
Operation	112
Color Print Matching	112
Choosing a Color Matching Method	116
Driver Options	118
Printing Using Special Features	127
Utilities	130
Troubleshooting	131
LCD Messages	131
Paper Jams	134
Problem Solving	141
Maintenance	148
Adding Paper	148
Changing the Toner Cartridge	151
Changing the Image Drum	157
Changing the Transfer Belt	160
Changing the Fuser Unit.	164
Cleaning the LED Heads	167
Transporting the Printer	169
Accessories	171
Internal Hard Disk Drive	171
Duplex Unit	173
Additional Paper Trays	174
Additional Memory	176
Specifications	179
Consumables	182
Toner.	182
Drums	182
Fuser Unit.	183
Transfer Belt.	183

Factory Default Settings	184
Print Menu	184
Media Menu	185
Color Menu	186
System Config Menu	187
PCL Emulation Menu (Windows Only)	187
PPR Emulation Menu (Windows Only)	188
FX Emulation Menu (Windows Only)	188
Parallel Menu (Windows Only)	189
USB Menu	189
Network Menu	189
Memory Menu	190
Disk Maintenance Menu	190
System Adjust Menu	190
Maintenance Menu	191
Index	192

Introduction

Congratulations on purchasing this color printer!

Features

Resolution	600 x 1200 dpi
Print Speed	<i>Color:</i> 20 ppm <i>B&W:</i> 24 ppm
Network Card	Standard
Duplex Unit	Optional ^a (see page 173)
Memory	64 MB
Hard Disk Drive	Optional (see page 171)

a. Requires additional memory (see page 176)

- Single pass digital technology for high quality, speed and reliability.
- Versatile paper handling:
 - Standard 530-sheet paper tray
 - Standard 100-sheet multi purpose tray for card stock, envelopes, labels, etc.
 - Optional 530-sheet paper trays providing up to a maximum of 1690-sheet capacity
- Flexible interfaces with automatic switching:
 - USB
 - High-speed, bi-directional parallel (IEEE-1284)
 - Industry standard network connectivity via internal network interface card
- Environmentally friendly: the advanced power save mode minimizes power consumption and the separate toner and drum design cuts down on waste.
- Automatic color balance adjustment: in order to ensure consistent output at all times, the machine automatically performs a color check when the machine is switched on, when the top cover is

opened and then closed, and adjusts the color balance automatically. It can even be set to adjust the color balance during long print runs.

- Auto media detect: detects the weight of the media being fed through the printer then automatically adjusts the fusing temperature, speed (if necessary) and transfer voltage to ensure correct fusing and print quality.
- Optional duplex printing for fast two-sided output.
- Optional high capacity 10Gb hard disk drive.

How To Use This Manual

This manual will lead you logically through the unpacking, setup and operation of your printer to help you to make the best use of its many advanced features.

It also includes:

- troubleshooting information
- maintenance guidelines
- instructions for adding optional accessories as your needs evolve

NOTES

This User's Guide has been written using one printer as a model, and the illustrations/screenshots reflect this.

The information in this manual is supplemented by the extensive online help facility associated with the printer driver software.

Online Usage

This manual is intended to be read on screen using Adobe Acrobat Reader. Use the navigation and viewing tools provided in Acrobat.

You can access specific information in two ways:

- In the list of bookmarks down the left hand side of your screen, click the topic of interest to jump to the required topic. (If the bookmarks are not available, use the Table of Contents.)

- In the list of bookmarks click Index to jump to the Index. Find the term of interest and click the associated page number to jump to the page containing the subject.

Printing Pages

The whole book, Individual pages, or sections may be printed. The procedure for printing from Acrobat Reader is:

1. From the toolbar, select **File**, then **Print**.
2. Choose which pages you wish to print:
 - a. **All pages** for the entire manual.
 - b. **Current page** for the page at which you are looking.
 - c. **Pages from** and **to** for the range of pages you specify by entering their page numbers.
3. Click **OK**.

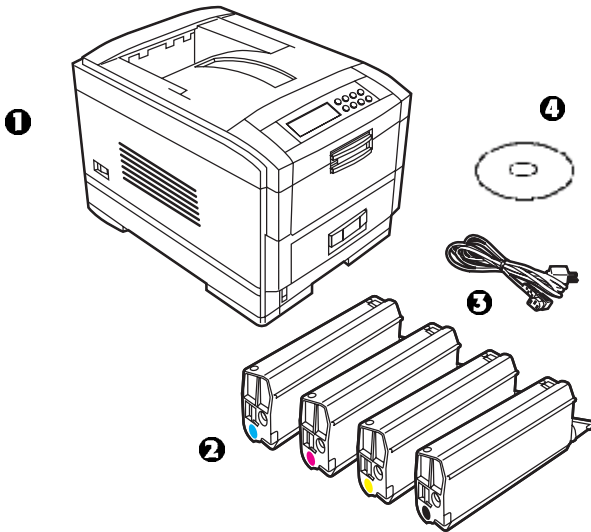
Getting Started

Unpacking

WARNING

This printer weighs of 106 lbs. (48 kg). 2 people are required to lift the printer safely.

After unpacking the printer and choosing a suitable place to put it, check that all the necessary parts are available to continue.



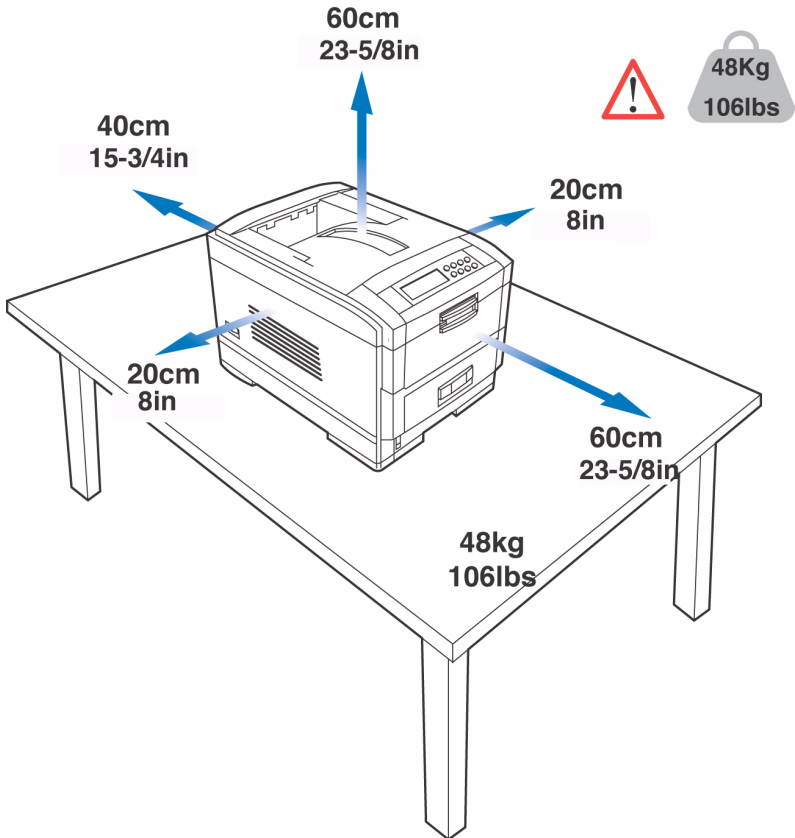
1. The printer.
 2. 4 toner cartridges (cyan, magenta, yellow and black).
 3. Power cable.
 4. CD.
 5. LED lens cleaner (not illustrated).
 6. Light-proof plastic bags (not illustrated).
 7. Documentation (not illustrated): Setup Guide, Software Installation Guide, Warranty booklet.
- Retain all packing materials to facilitate transport.

CD Contents

The CD supplied with your printer contains the drivers, software utilities and on-line manuals.

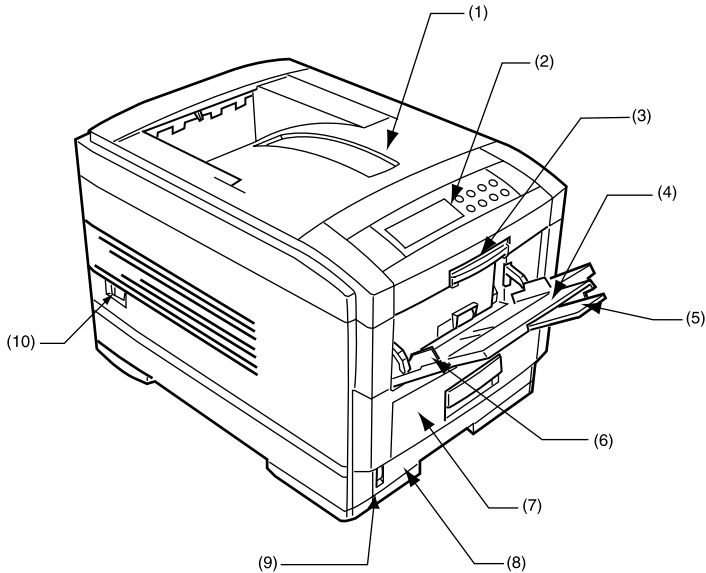
Printer Location

Place the printer on a flat surface large enough and strong enough to accept the size and weight of the printer. There must be sufficient space around the printer to allow for access and printer maintenance.



Printer Components

1. Top cover
2. Control panel
3. Top cover release catch
4. Multi purpose tray (manual feed)
5. Paper support extension

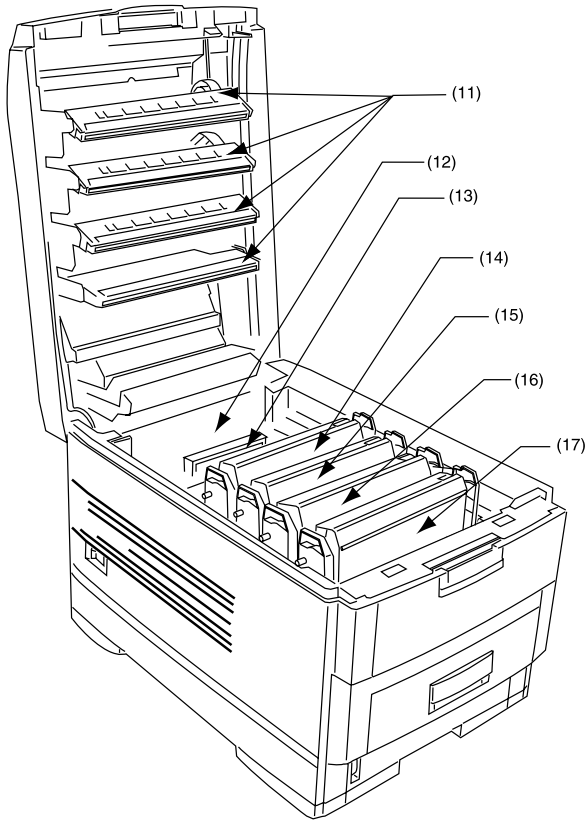


6. Paper guides
7. Front cover
8. Paper tray
9. Paper level indicator
10. Power switch

11.LED heads (4)

12.Discharge roller

13.Fuser unit



14.Image drum and toner cartridge (cyan)

15.Image drum and toner cartridge (magenta)

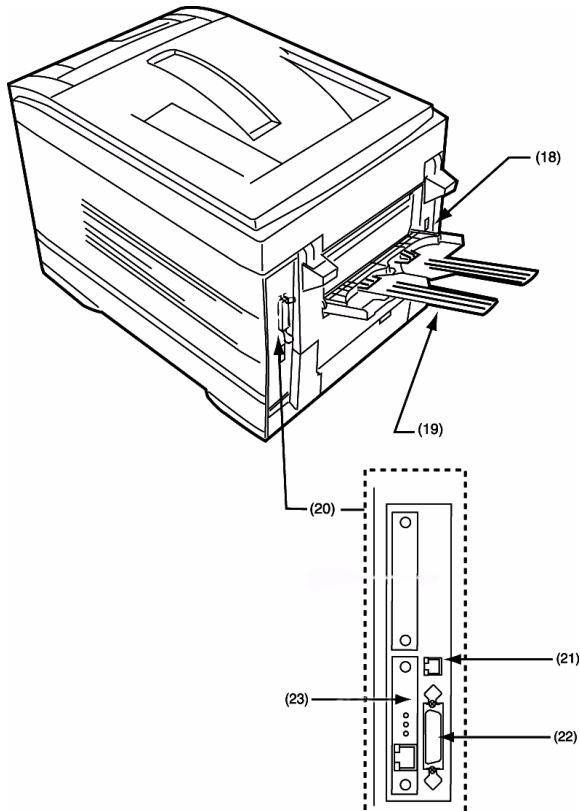
16.Image drum and toner cartridge (yellow)

17.Image drum and toner cartridge (black)

18.Power connector

19.Rear exit paper tray

20.Interfaces and option card slott



21.USB interface connector

22.Parallel interface connector

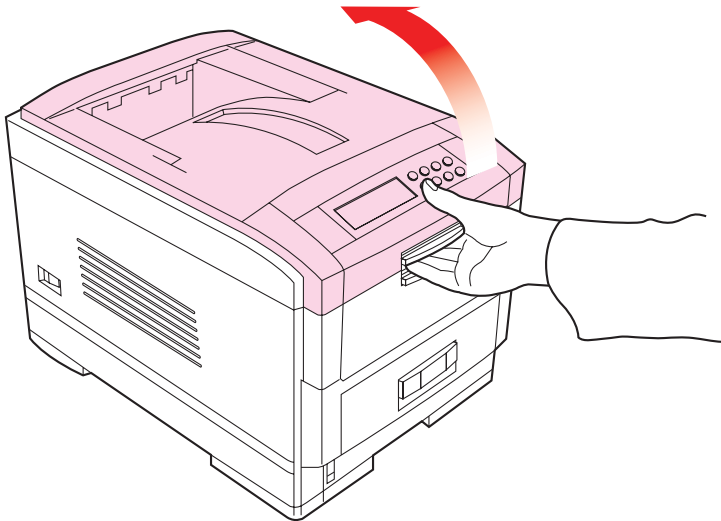
23.Network interface card

Setting up

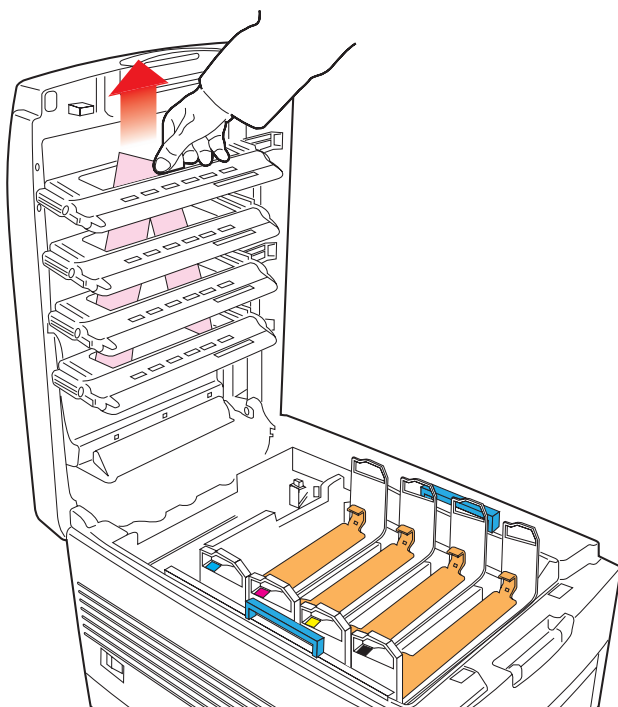
Before connecting this printer to a computer and power supply, the toner cartridges must be installed and paper inserted in the paper tray.

Packaging and Protective Sheet Removal

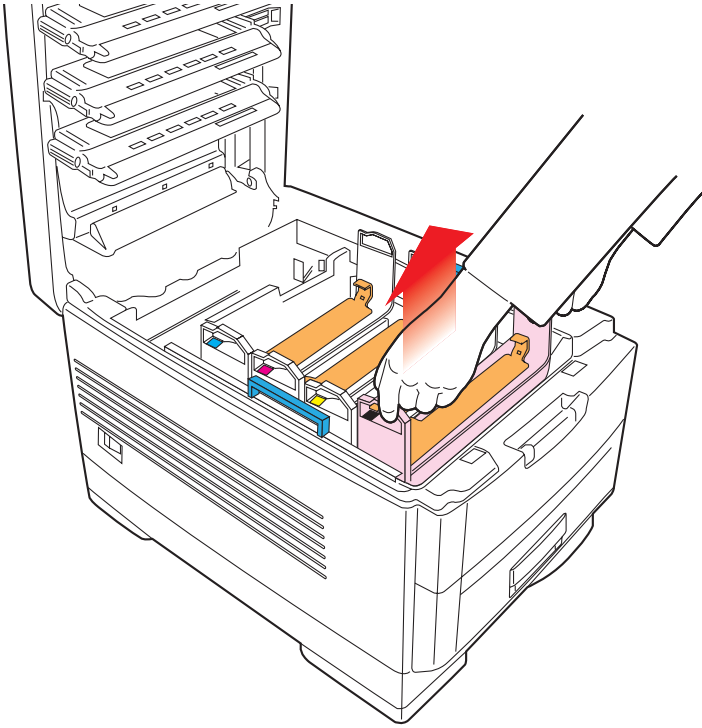
1. Remove any adhesive tape and packaging from the printer.
2. Using the release handle, open the top cover.



3. Remove the LED head restrainer from behind the LED heads in the top cover.



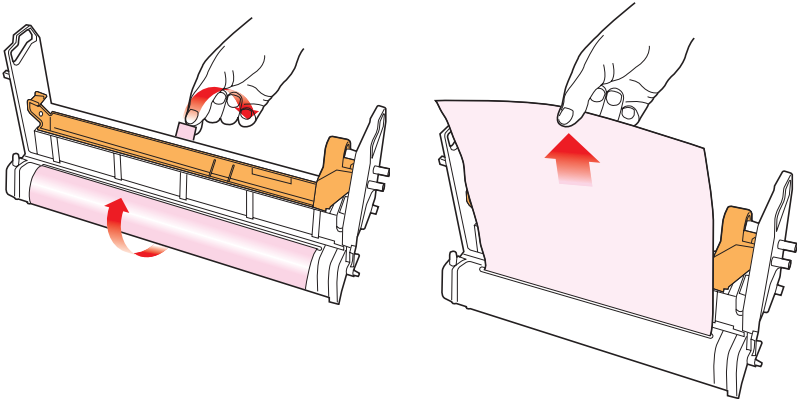
4. Remove the four image drums and place them on a level surface.



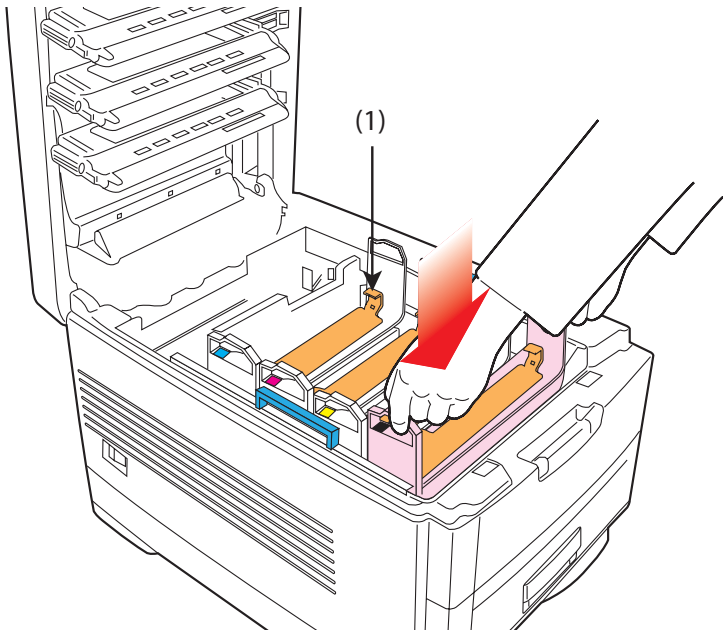
CAUTION!

- Never expose image drums to light for more than 5 minutes.
- Always hold image drum by the ends.
- Never expose image drums to direct sunlight.
- Never touch the green surface of the drum.

5. Remove the protective sheets from each of the four image drums.



6. Replace the four image drums into the printer making sure each image drum is installed in its correct color location.



7. Push the tab (1) inwards and remove the blanking plate from each of the image drums.

Toner Cartridge Installation

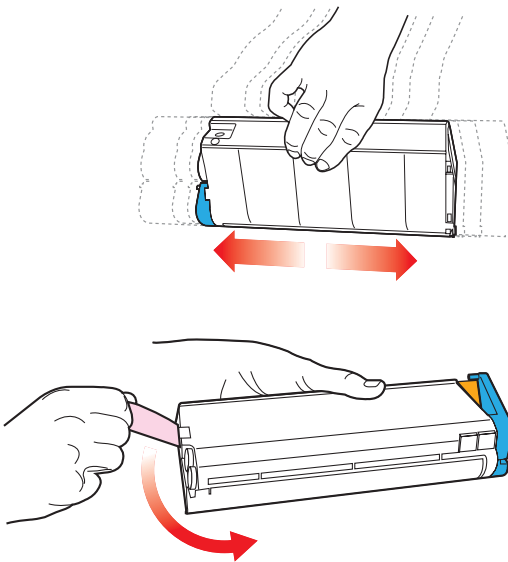
WARNING!

Take extreme care when handling toner.

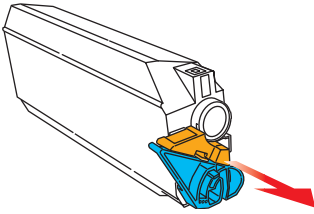
- *Toner can be harmful if inhaled, swallowed or if it gets in the eyes.*
- *Toner can also stain hands and clothing.*

See the Material Safety Data Sheets in your Warranty, Regulatory and Safety Information booklet for more information.

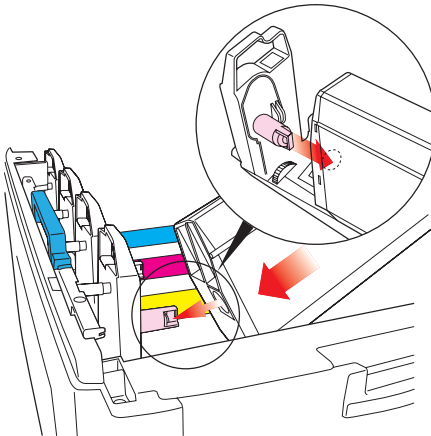
1. Remove the black toner cartridge from the package.
2. Shake the toner cartridge back and forth several times then, holding it horizontally, remove the tape.



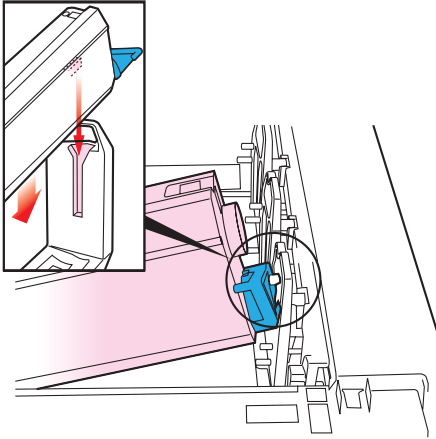
3. Remove the locking piece from behind the colored toner release lever.



4. Insert the toner cartridge into the black image drum, left side first, engaging the drum locating peg in the hole in the toner cartridge. *Make sure the colors of the toner cartridge and image drum correspond.*



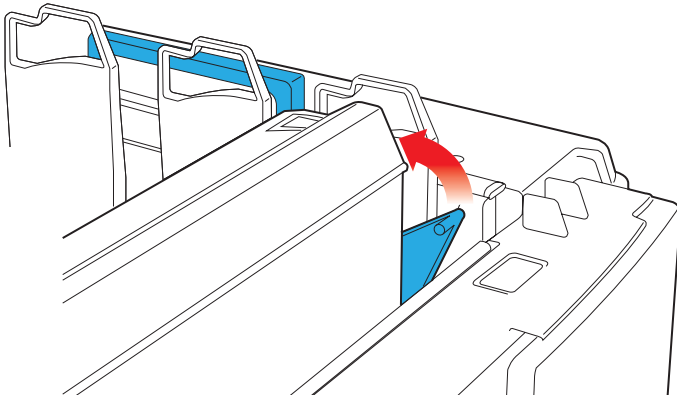
5. *Gently* push the toner cartridge down engaging the locking pin into the groove on the image drum.



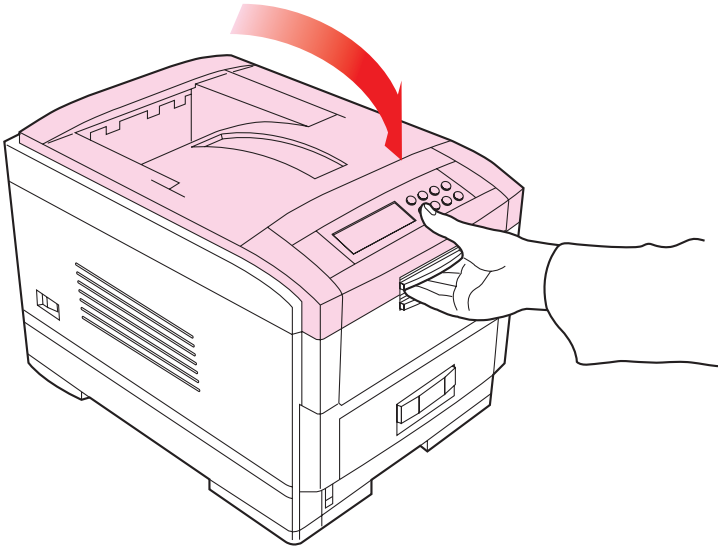
6. *Gently* push the colored lever toward the rear of the machine until it stops. This releases the toner into the image drum.

CAUTION!

The lever should go back easily. If the lever resists moving, stop and press down on the toner cartridge to be sure it is firmly in place before proceeding.

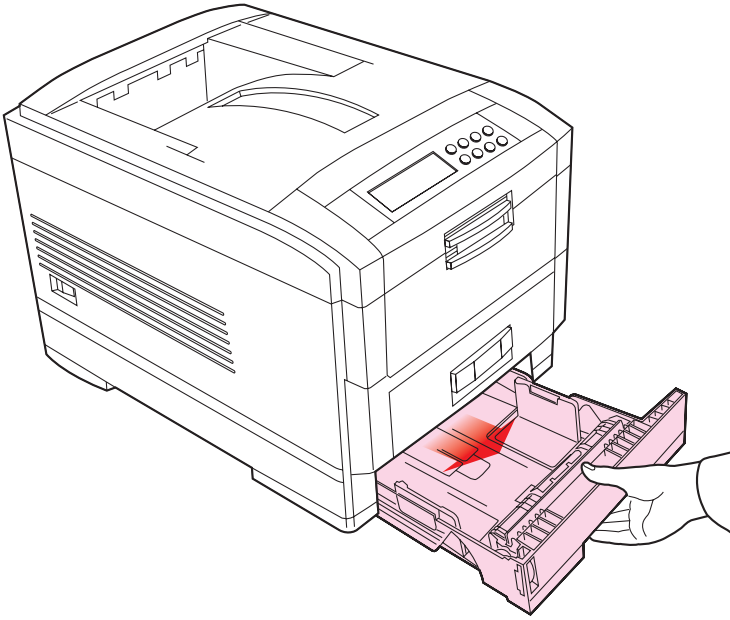


7. Repeat the process for each color toner cartridge, being careful to match the color toner to the color image drum.
8. Close the top cover.

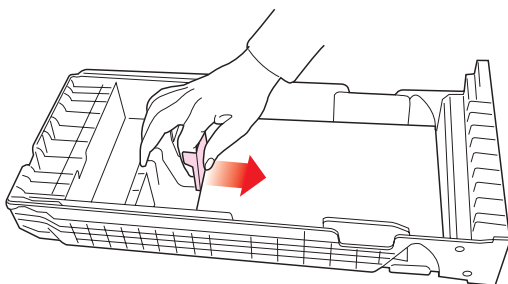
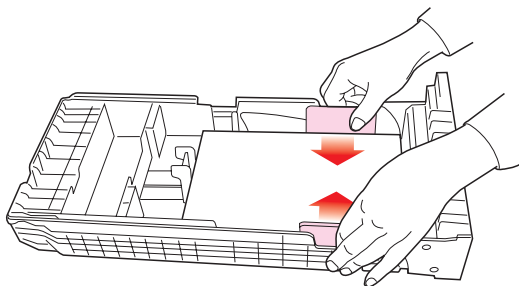


Loading Paper

1. Remove the paper tray from the printer.



2. Adjust the paper guides and rear stopper for the size of paper being used.

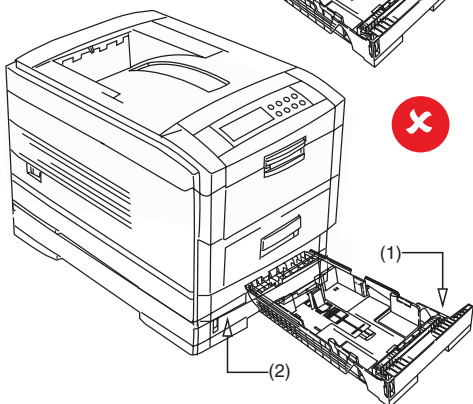
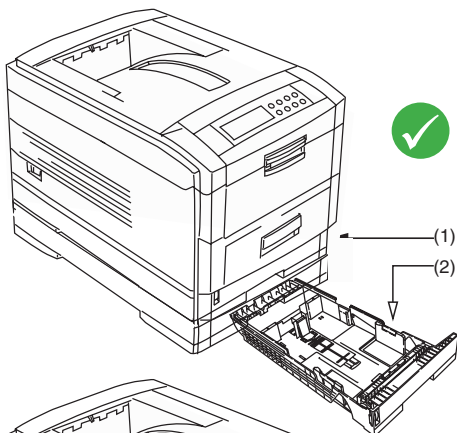
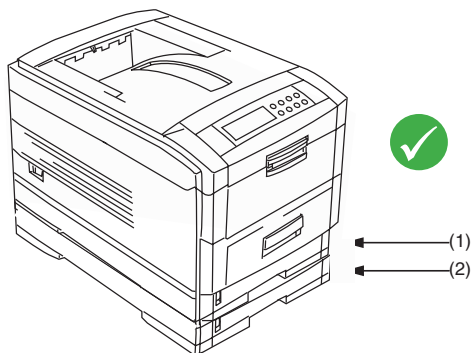


CAUTION!

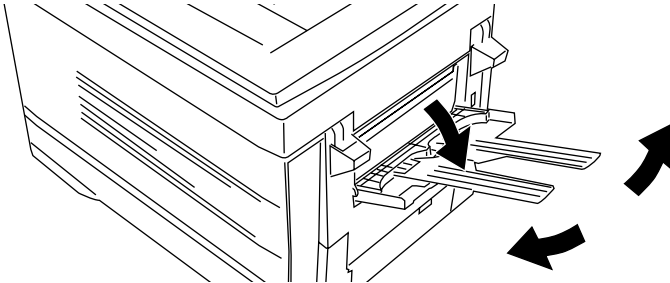
To prevent paper jams

- Don't leave space between the paper and the paper guides and rear stopper.
- Don't overfill the paper tray. Capacity depends on the type of paper and the paper weight.
- Don't load damaged paper.
- Don't load paper of different sizes, paper quality or thickness at the same time.
- Don't remove the paper tray during printing.
- Close the paper tray *gently*.

3. If installed, a lower paper tray cannot be used to print if there is no paper tray inserted above it.



4. For face *down* printing, make sure the rear paper exit is *closed* (the paper exits from the *top* of the printer). Paper is stacked in printed order and the paper tray capacity is approximately 500 sheets, depending on paper weight.
5. For face *up* printing, make sure the rear paper exit is *open* and the paper supports are extended. Paper is stacked in reverse order and tray capacity is approximately 100 sheets, depending on paper weight.



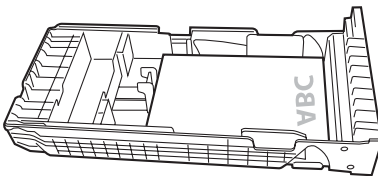
CAUTION!

Don't open or close the rear paper exit while printing, as it may result in a paper jam.

NOTE

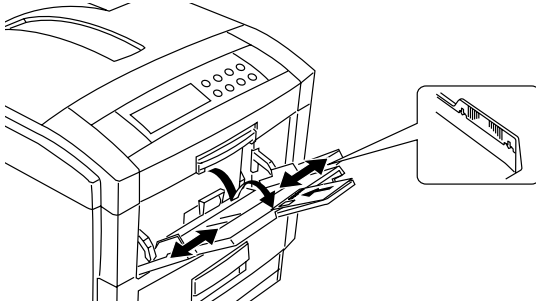
Always use the face down (rear) stacker for thick paper (card stock, etc.)

6. Load letterhead paper face down as shown for both portrait and landscape:



Manual Feed

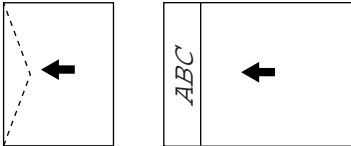
1. Open the Multi-purpose tray and extend the paper feed guides.



2. Load the media face *up*, and adjust the paper guides to the size of the media being used.

NOTE

- Don't exceed the Paper Full line (about 100 sheets depending on paper weight, 50 transparencies or 10 envelopes).
- Load envelopes face up (flap down) and letterhead stationery face up as shown for both portrait and landscape printing.



CAUTION!

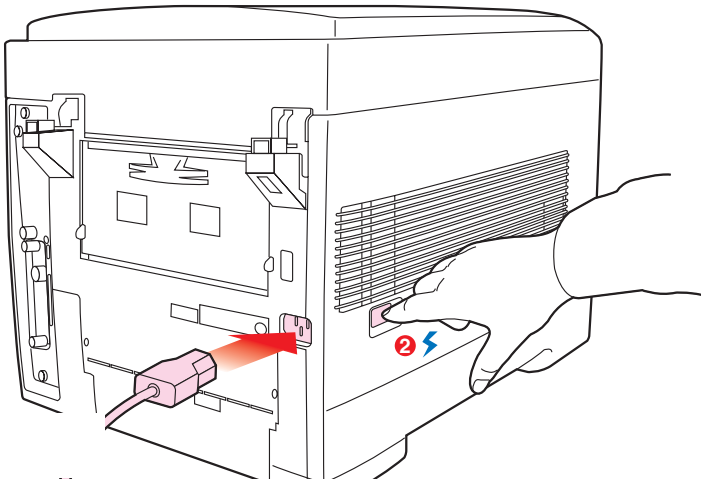
Don't open or close the rear paper exit while printing, as it may result in a paper jam.

Power Connection

WARNING!

Ensure both the printer power switch and the AC supply are switched OFF before connecting the power cable.

1. Connect the power cable (1) into the power socket on the printer, then into a grounded power supply outlet.



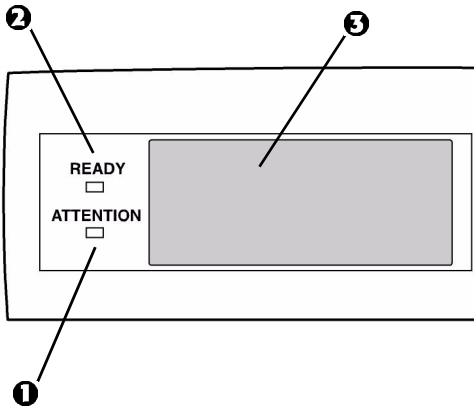
2. Switch the printer ON using the main power switch (2).

The printer will go through its initialization and warm up sequence. When the printer is ready, the READY indicator comes on and stays on (green) and the LCD indicates ONLINE.

NOTE

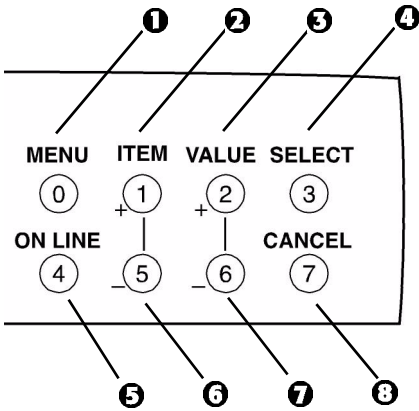
After installing the new toner cartridges, the message TONER LOW or CHANGE TONER may appear on the display. If this message does not disappear after a few pages have been printed, reinstall the appropriate toner cartridge.

Control Panel



- 1. Attention indicator (red).** ON indicates that attention is required, but *printing will continue*. FLASHING indicates that attention is required, but *printing will stop*.
- 2. Ready indicator (green).** ON - ready to receive data. FLASHING indicates processing data or error.
- 3. Liquid crystal display.** (LCD) panel. Two rows of up to 24 alphanumeric characters displaying print status, menu items in menu mode and error messages.

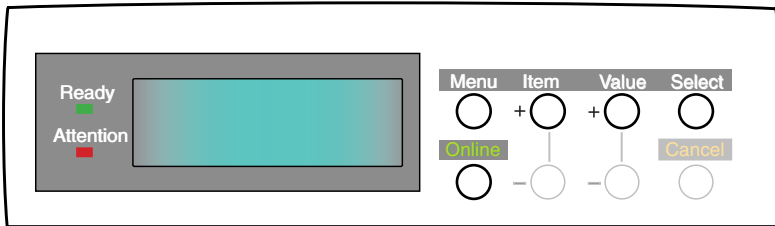
Control Panel (continued)



- 1. Menu button.** Press briefly to enter the MENU mode. Press briefly again to select the next menu. Press for more than 2 seconds to scroll through the different menus.
- 2. Item(+) button.** Press briefly to scroll forward to the next menu item.
- 3. Value (+) button.** Press briefly to scroll forward to the next value setting for each menu item.
- 4. Select button.** Press briefly to select the menu, item or value indicated on the LCD.
- 5. Online button.** Switches between online and offline status
 - When pressed in Menu mode, it returns the printer to on line status.
 - When pressed with **DATA PRESENT** displayed, it forces the printer to print out the remaining data in the printer.
 - When there is an error message indicating wrong paper size, pressing the ONLINE button forces the printer to print.
- 6. Item (–) button.** Press briefly to scroll backward to the previous menu item.
- 7. Value (–) button.** Press briefly to scroll backward to the previous value setting for each menu item.
- 8. Cancel button.** Press to cancel a print job.

Menu Settings

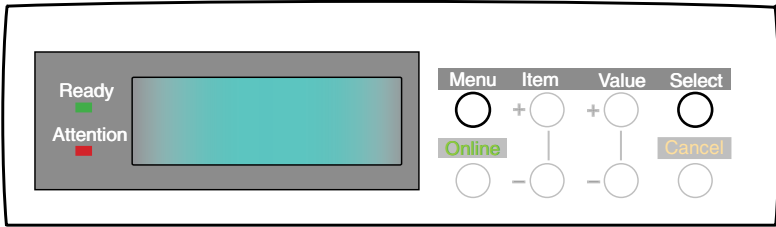
Changing the Display Language



Carry out the following instructions to change the language that is displayed on the printer's LCD.

1. Press the ONLINE button to put the printer offline.
2. Press the MENU button repeatedly until **SYSTEM CONFIG MENU** is displayed.
3. Press the SELECT button.
4. Press the ITEM button repeatedly until **LANGUAGE** is displayed.
5. Press the VALUE button repeatedly until the required language is displayed.
6. Press the SELECT button. An asterisk (*) appears next to the selected language.
7. Press the ONLINE button when you have finished setting the display language.

Printing the MenuMap



Print a list of menu settings to confirm that the printer is correctly configured.

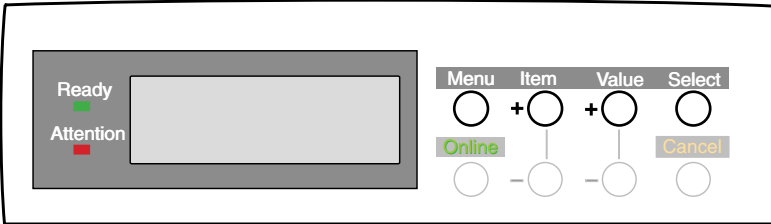
1. Make sure there is paper in the paper tray.
2. Press the MENU button until the **INFORMATION MENU** is displayed, then press the SELECT button.
3. Confirm that **PRINT MENU MAP** is displayed on the LCD.
4. Press the SELECT button to print the menu map.

Media Settings

NOTE

- If the settings in the printer differ from those selected on your computer, the printer will not print and the LCD will display an error message.
- The following printer settings are given as a guide only. Some software applications require the paper feed, size and media settings to be selected from within the application (page setup).

Selecting Paper Feed

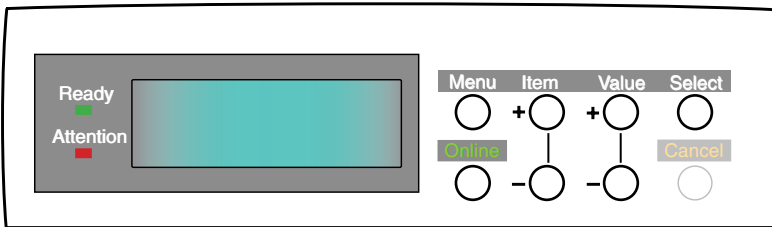


1. Press the ONLINE button to place the printer offline.
2. Press the MENU button repeatedly until **PRINT MENU** is displayed, then press the SELECT button.
3. Press the ITEM button until **PAPER FEED** is displayed.
4. Press the VALUE button until the required paper feed is displayed, then press the SELECT button. An asterisk (*) appears next to the selected paper feed.

NOTE

When **AUTO TRAYSWITCH** is set to **ON** and more than one paper tray is installed, paper feed automatically switches to the next available paper tray.

Selecting the Paper Size



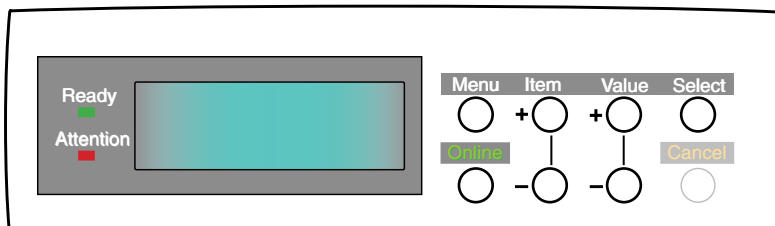
NOTE

- When using paper trays, standard paper sizes are recognized automatically with **CASSETTE SIZE** (default setting) selected. Paper size need only be set for custom paper sizes.
- When using the **Multi-Purpose (MP) tray** (manual feed), the paper size has to be selected.

1. Press the **ONLINE** button to place the printer offline.
2. Press the **MENU** button until **PRINT MENU** is displayed, then press **SELECT** button.
3. Press either **ITEM (+)** or **(-)** button repeatedly until **EDIT SIZE** is displayed.
4. Press either **VALUE (+)** or **(-)** button until the required paper size is displayed, then press the **SELECT** button. An asterisk (*) appears next to the selected paper size.
5. Press the **ONLINE** button to return the printer to online status.
6. Select the correct paper settings in the printer driver before printing the file.

Selecting the Media Type and Weight

Your printer automatically detects paper type and weight. You have the option, however, to override these settings as follows:



CAUTION!

If media type or media weight are not correctly set, print quality deteriorates and the fuser roller may be damaged.

1. Press the ONLINE button to place the printer offline.
2. Press the MENU button until **MEDIA MENU** is displayed, then press the SELECT button.
3. Press the ITEM (+) or (-) button until **MEDIA TYPE** or **MEDIA WEIGHT** for the required tray is displayed.
4. Press the VALUE (+) or (-) button until the required paper type or weight is displayed, then press the SELECT button. An asterisk (*) appears next to the selected paper type or weight.
5. Press the ONLINE button to return the printer back to online status.

Select the correct paper settings in the printer driver before printing the file.

Media Recommendations

We recommend the following guidelines when selecting media for use in this printer:

CAUTION

Print media must be able to withstand 446°F (230°C) for 0.2 second.

Paper

- For recommended papers see your authorized Sharp dealer.
- Paper should be stored flat and away from moisture, direct sunlight and heat sources.
- Don't use damp, damaged or curled paper.
- **The use of heavily laid or textured paper will seriously affect the life of the image drum and give poor print quality.** Print quality can be improved by changing the media setting to 'Ultra Heavy.' However, this will reduce the output speed and prevent the use of the duplex option.
- Don't use very smooth, shiny or glossy paper.
- Don't use heavily embossed headed paper, very rough paper or paper that has a large grain difference between the two sides.
- Don't use paper with perforations, cut-outs or ragged edges.
- Don't use carbon paper, NCR paper, photosensitive paper, pressure sensitive paper or thermal transfer paper.
- Don't use recycled paper.

Envelopes

- Use only recommended envelopes.
- Envelopes should be stored flat and away from moisture, direct sunlight and heat sources.
- Don't use envelopes with windows or metal clasps.
- Don't use envelopes with self sealing flaps.
- Don't use damp, damaged or curled paper envelopes.

Labels

- For recommended labels see your authorized Sharp dealer.
- Use only labels designed for use in color laser printers and photocopiers.
- Labels should cover entire carrier sheet.
- Carrier sheet or adhesive must not be exposed to any part of the printer.

Paper Feed and Exit

Selection of which paper feed and which paper exit to use for printing and whether simplex (single sided) or duplex (double sided) printing is available, depends upon the paper size, media weight and media type that is used. Please refer to the following tables.

Paper Sizes

Paper size	Feed		Exit		
	Tray 1	Tray 2/Tray 3	MP Tray Manual	Rear (Face up)	Top (Face down)
A4	S, D ^a	S, D ^a	S ^a	S, D ^a	S, D ^a
A5	S, D ^a	S, D ^a	S ^a	S, D ^a	S, D ^a
A6	S ^a	b	S ^a	S ^a	b
B5	S, D ^a	S, D ^a	S ^a	S, D ^a	S, D ^a
Letter	S, D ^a	S, D ^a	S, D ^a	S, D ^a	S, D ^a
Legal (13in)	S, D ^a	S, D ^a	S, D ^a	S, D ^a	S, D ^a
Legal (14in)	S, D ^a	S, D ^a	S, D ^a	S, D ^a	S, D ^a
Executive	S, D ^a	S, D ^a	S, D ^a	S, D ^a	S, D ^a
Envelopes	b	b	S ^a	S ^a	b
Custom (width 76.2 to 215.9mm; height 127.0 to 1200 mm)	b	b	S ^a	S ^a	b

- a. S = Simplex; D = Duplex (printing on both sides of the paper—requires optional duplex unit).
- b. Not Usable.

Paper Weights and Media Settings

	Media weight	Feed		Exit		
		Tray 1	Tray 2/ Tray 3	MP Tray (Manual)	Rear (face up)	Top (face down)
Paper, US Bond (Metric)						
17 lb. (64 g/m ²)	Light	S ^a	S ^a	S ^a	S ^a	S ^a
18 to 19 lb. (68-71 g/m ²)	Medium light	S ^a	S ^a	S ^a	S ^a	S ^a
20 to 24 lb. (75-90 g/m ²)	Medium	S, D ^a	S, D ^a	S, D ^a	S, D ^a	S, D ^a
25 to 27 lb. (91-104 g/m ²)	Medium heavy	S, D ^a	S, D ^a	S, D ^a	S, D ^a	S, D ^a
28 to 32 lb. (105-122 g/m ²)	Heavy	b	b	S ^a	S ^a	S ^a
33 to 54 lb. (123-203 g/m ²)	Ultra heavy	b	b	S ^a	S ^a	b
Transparencies: Media Weight Ignored						
Set MediaType = Transparency	b	S ^a	b	S ^a	S ^a	b
Labels						
0.1 to 0.17 mm thick	Medium Heavy	b	b	S ^a	S ^a	b
0.17 to 0.2 mm thick	Ultra Heavy	b	b	S ^a	S ^a	b

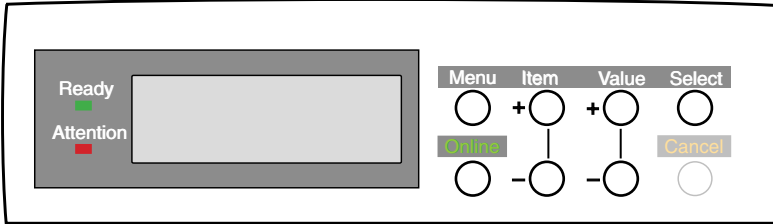
- a. S = Simplex; D = Duplex (printing on both sides of the paper).
- b. Not Usable.

Printer Settings

Confirming Current Settings

Current menu settings can be confirmed by printing the MenuMap: see “Printing the MenuMap” on page 32.

Changing the Settings



1. Press the MENU button until the required menu is displayed, then press the SELECT button.
2. Press the ITEM (+) or (–) button until the required item is displayed.
3. Press the VALUE (+) or (–) button until the required value is displayed.
4. Press the SELECT button. Selection of the value will be confirmed by an asterisk (*) appearing to the right of it.
5. Press the ONLINE button to return the printer to online status.

List of User Menu Settings

Listed in the following tables are the available printer settings. The default settings for the printer are in **bold** text.

Print Jobs Menu

This menu only appears if the hard disk drive is installed.

Item	Value	Description
ENTER PASSWORD	****	Sets password using a four-digit number (0~9). This item is also displayed even when OP MENU "ALL CATEGORY" is set to DISABLE in the Admin. menu.
SELECT JOB	No jobs; All jobs; File name 1 to nn	Selects printing job for Secure Print or Proof and Print. This item is also displayed even when OP MENU "ALL CATEGORY" is set to DISABLE in the Admin. menu.

Information Menu

Item	Value	Description
PRINT MENU MAP	Execute	Prints list of current menu settings.
PRINT FILE LIST	Execute	Prints job file list.
PRINT PCL FONT	Execute	Prints PCL font list.
PRINT PS FONT	Execute	Prints PostScript font list.
PRINT EPSON FX FONT	Execute	Prints an Epson FX font list.
PRINT ERROR LOG	Execute	Prints error log.

Test Print Menu

Item	Value	Description
PRINT ID CHECK PATTERN	Execute	Prints ID check pattern to detect bad ID. Displayed only if "TEST PRINT MENU" of the System Maintenance Menu is set to ENABLE.

Shutdown Menu

Item	Value	Description
SHUTDOWN START	Execute	Printer shut down sequence which prevents loss of data from the hard disk drive. <i>Appears only when the hard disk drive is installed.</i>

Print Menu

The default settings are **bold** face.

Item	Value	Description
COPIES	1 to 999	Sets the number of copies.
DUPLEX	On; Off	Specifies two-sided (duplex) printing if the optional duplex unit is installed.
BINDING	Long edge ; Short edge	Sets binding for duplex printing. Only displayed if duplex is ON.
PAPER FEED	Tray 1 ; Tray 2; Tray 3; MP Tray	Selects source of paper feed. Tray 2 and 3 only displayed if installed.
AUTO TRAY SWITCH	On ; Off	Automatic switching to next tray when tray in use empties.
TRAY SEQUENCE	Down ; Up; Paper feed tray	Specifies selection order priority for switching Auto Tray Select/Auto Tray Switch.

Print Menu (continued)

The default settings are **bold** face.

Item	Value	Description
MP TRAY USAGE	Normal tray; High priority tray; Feed when mismatching ; Do not use	Specifies MP tray usage. <u>Normal tray</u> : (Tray select/switch) Use as a normal tray. <u>High priority tray</u> : (Valid with Tray select only). If there is paper in the MP tray and Duplex is not specified, the printer uses the MP tray. <u>Feed when mismatching</u> . When a paper mismatch occurs (i.e. the tray's paper size/media type does not match the print data), a paper request is issued to the MP Tray. If the data is for Duplex print, a specified tray is used instead of the MP tray. <u>Do not use</u> . Even if auto switching, MP Tray will not be used. If MP Tray is designated in Paper Feed, printer behaves as though Normal Tray is selected.
MEDIA CHECK	Enable ; Disable	Sets whether the printer checks the matching of paper size to that of the tray. Only standard sizes are checked.
TRANSPARENCY CHECK OHP	Auto ; Disable	Enable/Disable the transparency auto detect function.
RESOLUTION	600 dpi x 1200 dpi	Selects print resolution.
TONER SAVE MODE	ON; OFF	ON: Enables Toner Save mode. OFF: Disables Toner Save mode.
MONO-PRINT SPEED	Auto ; color speed; Normal speed	Selects monochrome printing speed. <u>Auto</u> : prints at the most appropriate speed for page process. Color: prints always at the color print speed. <u>Normal</u> : Always prints at the monochrome print speed.
ORIENTATION	Portrait ; Landscape	Sets page orientation for printing.
LINE PER PAGE	5 to 128. Default = 60 .	Sets the number of lines that can be printed on a standard letter-size page. Invalid in PostScript mode.

Print Menu (continued)

The default settings are **bold** face.

Item	Value	Description
EDIT SIZE	Cassette size ; Letter; Executive; Legal 14; Legal 13.5; Legal 13; A4; A5; A6; B5; Custom; Com-9* envelope; Com-10* envelope; Monarch* envelope; DL* Envelope; C5* Envelope *Use short edge feed.	Cassette size is selected when using standard sized paper in the paper tray. Edit size is only used when printing one page size onto a different paper size, e.g. A6 onto A4, edit size would be set to A6, but actual paper in paper tray is A4. Invalid in PostScript mode.

Media Menu

The default settings are **bold**.

Item	Value	Description
TRAY1 MEDIATYPE	Plain ; Letterhead; Transparency; Bond; Recycled; Card stock; Rough.	Selects the media type for Tray 1.
TRAY1 MEDIaweIGHT	AUTO , Light, Medium light, Medium, Medium Heavy, Heavy, Ultra Heavy	Sets the media weight for Tray 1.
TRAY2 MEDIATYPE	Plain ; Letterhead; Bond; Recycled; Card stock; Rough.	Sets the media type for optional Tray 2. (Only displayed if installed)
TRAY2 MEDIaweIGHT	Auto ; Light; Medium light; Medium; Medium heavy; Heavy; Ultra heavy	Selects the media WEIGHT for optional Tray2. (Only displayed if installed)
TRAY3 MEDIATYPE	Plain ; Letterhead; Bond; Recycled; Card stock; Rough.	Selects the media type for optional Tray3. (Only displayed if installed)
TRAY3 MEDIaweIGHT	Auto ; Light; Medium light; Medium; Medium heavy; Heavy; Ultra heavy	Sets the paper weight for optional Tray. 3. (Only displayed if installed)

Media Menu (continued)

The default settings are **bold**.

Item	Value	Description
MP TRAY PAPER SIZE	A4; A5; A6; B5; Legal 14; Legal 13.5; Legal 13; Letter ; Executive; Custom; Com-9 envelope; Com-10 envelope; Monarch envelope; DL Envelope; C5 Envelope	Sets the media size for the multipurpose tray.
MP TRAY MEDIATYPE	Plain ; Letterhead; Transparency; Labels; Bond; Recycled; Card stock; Rough	Selects the paper type for multipurpose tray.
MP TRAY MEDIAWEIGHT	Auto ; Light; Medium light; Medium; Medium heavy; Heavy; Ultra heavy	Sets the paper weight for the multipurpose tray.
UNIT OF MEASURE	Inch ; Millimeters	Sets the units of measurement for custom paper size.
X DIMENSION	3 inches to 8.5 inches (76 mm to 216 mm)	Sets the dimensions of custom paper. For these dimensions to work, the MP tray paper size must be set to custom.
Y DIMENSION	5 inches to 47.2 inches; default = 11 inches (127 mm to 1200 mm)	Sets the dimensions of custom paper. For these dimensions to work, the MP tray paper size must be set to custom.

Color Menu

The default settings are **bold**.

Item	Value	Description
AUTO DENSITY MODE	Auto ; Manual	Select whether density adjustment and Tone Response Curve (TRC) compensation is automatic. <u>Auto</u> : Density adjustment is automatically run under specified conditions, and reflected in the TRC compensation. <u>Manual</u> : Density adjustment is done manually (see page 68).

Color Menu (continued)

The default settings are **bold**.

Item	Value	Description
ADJUST DENSITY	Execute	If EXECUTE is selected, the printer will immediately adjust density and reflect it in the TRC compensation. Density adjustment must be executed when the printer is idle. It may become invalid if executed in any other state.
COLOR TUNING	Print pattern	Prints the pattern for the user to manually adjust TRC. Ordinarily this function is not needed because TRC is automatically adjusted. This function permits TRC adjustment to your requirement by using the adjustment menu of HIGHLIGHT, MID-TONE, and DARK for each of CMYK. See page 68.
CYAN, MAGENTA, YELLOW OR BLACK HIGHLIGHT	0+1+2+3-3-2-1	Adjusts HIGHLIGHT (light area) of Cyan, Magenta, Yellow or Black TRC. Plus indicates adjustment toward a darker level and minus toward lighter.
CYAN, MAGENTA, YELLOW OR BLACK MID-TONE	0+1+2+3-3-2-1	Adjusts MID-TONE of Cyan, Magenta, Yellow or Black TRC. Plus indicates adjustment toward a darker level and minus toward lighter.
CYAN, MAGENTA, YELLOW OR BLACK DARK	0+1+2+3-3-2-1	Adjusts DARK of Cyan, Magenta, Yellow or Black TRC. Plus indicates adjustment toward a darker level and minus toward lighter.
CYAN, MAGENTA, YELLOW OR BLACK DARKNESS	0+1+2+3-4-3-2-1	Adjusts Cyan, Magenta, Yellow or Black engine density. Please do not change this setting.
ADJUST REGISTRATION	Execute	When this menu is selected, the printer performs an Auto Adjust Registration. Must be executed in the idle state (Auto Registration OFF).

Color Menu (continued)

The default settings are **bold**.

Item	Value	Description
CYAN REGISTRATION - FINE ADJUST	0 +1+2+3-3-2-1	Fine Adjust makes an adjustment to image registration in Cyan, Magenta or Yellow against Black in the horizontal direction. The adjustment is reflected as an offset (addition) value to the corrections through Auto color Registration Correction. Values are adjusted in increments of .026 mm. Example: if the paper movement is upward - if a value is increased (+) it means the image moves downward in relation to it.
MAGENTA REGISTRATION - FINE ADJUST	0 +1+2+3-3-2-1	
YELLOW REGISTRATION - FINE ADJUST	0 +1+2+3-3-2-1	
INK SIMULATION	Off ; SWOP	The printer has its own process simulation generator which simulates standard colors in the printer. This function is enabled only with Postscript language jobs.
INK LIMIT	Dark ; Medium; Light	Selects the limit of the toner layer thickness. If paper curl occurs in DARK printing, select MEDIUM or LIGHT. This sometimes helps reduce curl.
CMY 100% DENSITY	Disable ; enable	Selects enable/disable 100% output against the CMY100% TRC compensation. Ordinarily, the TRC compensation function controls the appropriate print density; thus, 100% output is not always enabled. Selecting ENABLE will allow 100% output. In actual printing, the TRC values, too, are controlled by color Matching. This function is used for special purposes; for example, to specify the color for CMYK color space in PS.

System Configuration Menu

The default settings are **bold**.

Item	Value	Description
POWER SAVE DELAY TIME	5 min; 15 min; 30 min; 60 min ; 240 min.	Sets the time before printer enters power save mode.
PERSONALITY	Auto emulation ; PCL; IBM PPR III XL; Epson FX; Adobe PostScript	Selects the printer emulation language. Note: the only printer languages that can be selected are those enabled in the Personality section of the Maintenance menu .
USB PS-PROTOCOL	ASCII RAW	Specifies PostScript (PS) communication protocol mode of data from USB. (In RAW mode, Ctrl-T is invalid.)
NETWORK PS PROTOCOL	ASCII RAW	This Item displays only when the network card is installed. Specifies PS communication protocol mode of data from the network card . (In RAW mode, Ctrl-T is invalid.)
CLEARABLE WARNING	On ; Job	PCL emulation: Sets the time before deleting error messages. If changed to Job, error remains displayed until next print job is received. PS emulation: Error messages are only shown during job regardless of setting.
AUTO CONTINUE	On; Off	Sets the printer to automatically recover after a memory overflow or print overrun.
MANUAL TIMEOUT	60 sec ; 30 sec; Off	This parameter sets the period of time, that after requesting paper to be inserted and is not inserted, when the print job is cancelled. Only works in PostScript mode.
WAIT TIMEOUT	Off; 5 sec to 300 sec; default = 40 sec	Sets the time between receiving the last byte of data and the page being automatically ejected. Only works in PCL mode. In PS mode the job will be cancelled.

System Configuration Menu (continued)

The default settings are **bold**.

Item	Value	Description
LOW TONER	Continue ; Stop	If set to CONTINUE, allows printing to continue when Low toner is displayed. If STOP is selected - when Low toner is displayed, the printer goes off line.
JAM RECOVERY	ON ; OFF	Sets whether or not printing will continue after a paper jam has been cleared. If set to OFF, the print job that was being printed when the paper jam occurred will be cancelled after clearing the paper jam. When set to ON, the print job will continue after the jam has been cleared.
ERROR REPORT	ON ; OFF	When set to ON, prints an error report when internal error occurs. Only works in PostScript mode.
LANGUAGE	English ; German; French; Italian; Spanish; Swedish; Norwegian; Danish; Dutch; Turkish; Portuguese; Polish	Selects the printer display language.

PCL Emulation Menu

The default settings are **bold**.

Item	Value	Description
FONT SOURCE	Resident ; DIMM0; Downloaded	Selects location of the PCL font used. DIMM0 is displayed only when font DIMM ROM exists in the slot. Downloaded only appears if fonts have been down loaded to the printer.
FONT NO.	I000 , C001, S001	Sets the PCL font number. I = internal (resident font); I000 = Courier. C = Font stored in the printer's Flash memory. S = downloaded soft font, stored on the printer's internal hard disk drive. Applies only to printers with a hard disk drive installed.
FONT PITCH	0.44 cpi to 99.99 cpi in 0.01 cpi increments Default = 10.00 cpi	Sets the font width in characters per inch. Only displayed if the font is a fixed spacing outline font.
FONT HEIGHT	4.00 to 999.75 point, in 0.25 point increments Default = 12.00 point	Sets the font point size. Applies only to fixed fonts (does not apply to proportional fonts).

PCL Emulation Menu (continued)

The default settings are **bold**.

Item	Value	Description
SYMBOL SET	PC-8 , PC-8 Dan/Nor, PC-8 TK, PC-775, PC-850, PC-852, PC-855, PC-857 TK, PC-858, PC-866, PC-869, PC-1004, Pi Font, Plska Mazvia, PS Math, PS Text, Roman-8, Roman-9, Roman Ext, Serbo Croat1, Serbo Croat2, Spanish, Ukrainian, VN Int'l, VN Math, VN US, Win 3.0, Win 3.1 Bit, Win 3.1 Cyr, Win 3.1 Grk, Win 3.1 Heb, Win 3.1 L1, Win 3.1 L2, Win 3.1 L5, Wingdings, Dingbats MS, Symbol, OCR-A, OCR-B, HP ZIP, USPSFIM, USPSSTP, USPSZIP, Bulgarian, CWI Hung, DeskTop, German, Greek-437, Greek-437 Cy, Greek-928, Hebrew NC, Hebrew OC, IBM-437, IBM-850, IBM-860, IBM-863, IBM-865, ISO Dutch, ISO L1, ISO L2, ISO L5, ISO L6, ISO L9, ISO Swedish1, ISO Swedish2, ISO Swedish3, ISO-2 IRV, ISO-4 UK, ISO-6 ASC, ISO-10 S/F, ISO-11 Swe, ISO-14 JASC, ISO-15 Ita, ISO-16 Por, ISO-17 Spa, ISO-21 Ger, ISO-25 Fre, ISO-57 Chi, ISO-60 Nor, ISO-61 Nor, ISO-69 Fre, ISO-84 Por, ISO-85 Spa, Kamenicky, Legal, Math-8, MC Text, MS Publish, PC Ext D/N, PC Ext US, PC Set1, PC Set2 D/N, PC Set2 US,	Selects a PCL character symbol set.
A4 PRINT WIDTH	78 column ; 80 column	If you are printing a letter size document on an A4 size sheet, select 80 column. This condenses the print to fit on the slightly narrower A4 sheet, without changing the line breaks.

PCL Emulation Menu (continued)

The default settings are **bold**.

Item	Value	Description
WHITE PAGE SKIP	OFF ; ON	Change this setting to ON if you do not wish to print blank pages; PCL mode.
CR FUNCTION	CR ; CR+LF	Sets functionality on receipt of CR code in PCL mode.
LF FUNCTION	LF ; LF+CR	Sets functionality on receipt of LF code in PCL mode.
PRINT MARGIN	Normal ; 1/5 inch; 1/6 inch	Sets the width of the non-printed margins.
TRUE BLACK	OFF , ON	PCL only: Sets whether to use Composite Black (CMYK mixed) or Pure Black (K only) for the black (100%) in image data. OFF = Composite (CMYK) Black. Provides best results when printing photographs. ON = Pure Black (black toner only). Provides best results when printing a combination of text and graphics.

PPR Emulation Menu

The default settings are **bold**.

Item	Value	Description
PEN WIDTH ADJUST	ON ; OFF	IN PCL, when switched ON, emphasizes the pen width to improve the appearance of lines specified with minimum width.
CHARACTER PITCH	10 CPI ; 12 CPI; 17 CPI; 20 CPI; PROPORTIONAL	Specifies character pitch in IBM PPR emulation.
FONT CONDENSE	12CPI to 20 CPI ; 12CPI to 12CPI	Specifies 12CPI pitch for Condense Mode.
CHARACTER SET	Set 2 ; Set 1	Specifies a character set.

PPR Emulation Menu (continued)

The default settings are **bold**.

Item	Value	Description
SYMBOL SET	PC-8, PC-8 Dan/Nor, PC-8 TK, PC-775, PC-850, PC-852, PC-855, PC-857 TK, PC-858, PC-866, PC-869, PC-1004, Pi Font, Plska Mazvia, PS Math, PS Text, Roman-8, Roman-9, Roman Ext, Serbo Croat1, Serbo Croat2, Spanish, Ukrainian, VN Int'l, VN Math, VN US, Win 3.0, Win 3.1 Bit, Win 3.1 Cyr, Win 3.1 Grk, Win 3.1 Heb, Win 3.1 L1, Win 3.1 L2, Win 3.1 L5, ISO Swedish1, ISO Swedish2, ISO Swedish3, ISO-2 IRV, ISO-4 UK, ISO-6 ASC, ISO-10 S/F, ISO-11 Swe, ISO-14 JASC, ISO-15 Ita, ISO-16 Por, ISO-17 Spa, ISO-21 Ger, ISO-25 Fre, ISO-57 Chi, ISO-60 Nor, ISO-61 Nor, ISO-69 Fre, ISO-84 Por, ISO-85 Spa, Kamenicky, Legal, Math-8, MC Text, MS Publish, PC Ext D/N, PC Ext US, PC Set1, PC Set2 D/N, PC Set2 US, Bulgarian, CWI Hung, DeskTop, German, Greek-437, Greek-437 Cy, Greek-928, Hebrew NC, Hebrew OC, IBM-437 , IBM-850, IBM-860, IBM-863, IBM-865, ISO Dutch, ISO L1, ISO L2, ISO L5, ISO L6, ISO L9	Specifies a symbol set.
LETTER 0 STYLE	Disable ; Enable	Specifies the style that replaces 9B Hex with the letter o and 9D Hex with a zero
ZERO CHARACTER	Normal ; Slashed	Sets the zero to be slashed or unslashed.
LINE PITCH	6 LPI ; 8 LPI	Specifies the line spacing (lines per inch).

PPR Emulation Menu (continued)

The default settings are **bold**.

Item	Value	Description
WHITE PAGE SKIP	OFF ; ON	Change this setting to ON if you do not wish to print blank pages. Not available for duplex printing.
CR FUNCTION	CR ; CR+LF	Sets functionality on receipt of CR code.
LF FUNCTION	LF ; LF+CR	Sets functionality on receipt of LF code.
LINE LENGTH	80 COLUMN ; 136 COLUMN	Specifies the number of characters per line.
FORM LENGTH	11 INCH ; 11.7 INCH; 12 INCH	Specifies the length of paper.
TOF POSITION	0.0 to 1.0 INCH , in 0.1-inch increments	Specifies the distance of print from the top edge of the paper.
LEFT MARGIN	0.0 to 1.0 INCH , in 0.1-inch increments	Specifies the distance of print from the left hand edge of the paper.
FIT TO LETTER	Disable; Enable	Fits print data, equivalent to 11 inches (66 lines), in the LETTER-size printable area.
TEXT HEIGHT	Same ; Diff	Sets the height of a character. SAME: Same height regardless of CPI. DIFF: Height varies depending on CPI.

FX Emulation Menu

The default settings are **bold**.

Item	Value	Description
CHARACTER PITCH	10 CPI ; 12 CPI; 17 CPI; 20 CPI; PROPORTIONAL	Specifies character pitch in this emulation.
CHARACTER SET	Set 2 ; Set 1	Specifies which Epson character set is used.
SYMBOL SET	PC-8, PC-8 Dan/Nor, PC-8 TK, PC-775, PC-850, PC-852, PC-855, PC-857 TK, PC-858, PC-866, PC-869, PC-1004, Pi Font, Plska Mazvia, PS Math, PS Text, Roman-8, Roman-9, Roman Ext, Serbo Croat1, Serbo Croat2, Spanish, Ukrainian, VN Int'l, VN Math, VN US, Win 3.0, Win 3.1 Bit, Win 3.1 Cyr, Win 3.1 Grk, Win 3.1 Heb, Win 3.1 L1, Win 3.1 L2, Win 3.1 L5, ISO Swedish1, ISO Swedish2, ISO Swedish3, ISO-2 IRV, ISO-4 UK, ISO-6 ASC, ISO-10 S/F, ISO-11 Swe, ISO-14 JASC, ISO-15 Ita, ISO-16 Por, ISO-17 Spa, ISO-21 Ger, ISO-25 Fre, ISO-57 Chi, ISO-60 Nor, ISO-61 Nor, ISO-69 Fre, ISO-84 Por, ISO-85 Spa, Kamenicky, Legal, Math-8, MC Text, MS Publish, PC Ext D/N, PC Ext US, PC Set1, PC Set2 D/N, PC Set2 US, Bulgarian, CWI Hung, DeskTop, German, Greek-437, Greek-437 Cy, Greek-928, Hebrew NC, Hebrew OC, IBM-437 , IBM-850, IBM-860, IBM-863, IBM-865, ISO Dutch, ISO L1, ISO L2, ISO L5, ISO L6, ISO L9	Specifies a symbol set.

FX Emulation Menu (continued)

The default settings are **bold**.

Item	Value	Description
LETTER 0 STYLE	DISABLE ; ENABLE	Specifies the style that replaces 9B Hex with letter o and 9D Hex with a zero
ZERO CHARACTER	NORMAL ; SLASHED	Sets the zero to be slashed or unslashed.
LINE PITCH	6 LPI ; 8 LPI	Specifies the line spacing (lines per inch).
WHITE PAGE SKIP	OFF ; ON	Change this setting to ON if you do not wish to print blank pages Not available for duplex printing.
CR FUNCTION	CR ; CR+LF	Sets functionality on receipt of CR code.
LF FUNCTION	LF ; LF+CR	Sets functionality on receipt of LF code.
LINE LENGTH	80 COLUMN ; 136 COLUMN	Specifies the number of columns that will print on a page (characters per line).
FORM LENGTH	11 inch ; 11.7 inch; 12 inch	Specifies the length of print media.
TOF POSITION	0.0 to 1.0 inch in 0.01-inch increments	Specifies the distance of print from the top edge of the paper.
LEFT MARGIN	0.0 to 1.0 inch in 0.01-inch increments	Specifies the distance of print from the left hand edge of the paper.
FIT TO LETTER	DISABLE; ENABLE	Sets the printing mode that can fit print data, equivalent to 11 inches (66 lines), in the LETTER-size printable area.
TEXT HEIGHT	SAME ; DIFF	Sets the height of a character. SAME: Same height regardless of CPI. DIFF: Height varies depending on CPI.

Parallel Menu

The default settings are **bold**.

Item	Value	Description
PARALLEL	ENABLE ; DISABLE	Selects parallel (Centronics) interface.
BI-DIRECTION	ENABLE ; DISABLE	Selects bi-directional communication.
ECP	ENABLE ; DISABLE	Selects ECP mode.
ACK WIDTH	NARROW ; MEDIUM; WIDE	Sets ACK width for compatible reception: Narrow = 0.5 μ S Medium = 1.0 μ S Wide = 3.0 μ S
ACK/BUSY TIMING	ACK-IN-BUSY ; ACK-WHILE-BUSY	Sets output order for ACK and BUSY during reception. ACK IN BUSY: BUSY=LOW to the end of the ACK pulse. ACK WHILE BUSY: BUSY=LOW to the center of the ACK pulse.
I-PRIME	3 MICRO SEC; 50 MICRO SEC; DISABLE	Sets or disables the i-Prime signal.
OFFLINE RECEIVE	ENABLE; DISABLE	Enable = maintains reception without changing the interface signal, even though an alarm occurs. The interface stays open even if the ON LINE button is pressed. The interface issues a BUSY signal only when the receive buffer is full.

USB Menu

The default settings are **bold**.

Item	Value	Description
USB	ENABLE ; DISABLE	Selects USB interface.
SOFT RESET	ENABLE; DISABLE	Enables/Disables soft reset command.
OFFLINE RECEIVE	ENABLE; DISABLE	Enable = maintains reception without changing the interface signal, even if an alarm occurs. The interface stays open even if the ON LINE button is pressed. The interface issues a BUSY signal only when the receive buffer is full.

Network Menu

The default settings are **bold**.

Item	Value	Description
TCP/IP	ENABLE ; DISABLE	Selects TCP/IP protocol.
NETWARE	ENABLE ; DISABLE	Selects Netware protocol.
ETHERTALK	ENABLE ; DISABLE	Selects EtherTalk protocol.
NETBEUI	ENABLE ; DISABLE	Selects NetBEUI protocol.
FRAME TYPE	AUTO ; 802.2; 802.3 ETHER-II; SNAP	Selects Ethernet frame type.
DHCP/BOOTP	ENABLE ; DISABLE	Selects whether selection of DHCP/BOOTP is automatic.
RARP	ENABLE; DISABLE	Selects whether selection of RARP is automatic.
IP ADDRESS	xxx.xxx.xxx.xxx	Configures IP address.
SUBNET MASK	xxx.xxx.xxx.xxx	Configures subnet mask.
GATEWAY ADDRESS	xxx.xxx.xxx.xxx	Configures gateway address.
PRINT SETTINGS	ON; OFF	Selects printing of network menu map. ON = When printer exits the menu mode it will print the network MenuMap showing results of self-diagnosis and settings.
INITIALIZE	ON; OFF	Selects network initialization. ON = network initializes as the printer exits the menu.

Memory Menu

The default settings are **bold**.

Item	Value	Description
RECEIVE BUFF SIZE	AUTO ; 0.5 MB; 1 MB; 2 MB; 4 MB; 8 MB; 16 MB; 32 MB	Sets the size of the receive buffer and depends on the amount of memory installed in the printer.
RESOURCE SAVE	AUTO ; OFF ; 0.5 MB; 1 MB; 2 MB; 4 MB; 8 MB; 16 MB; 32 MB	Set the size of the font cache area and depends on the amount of memory installed in the printer.
FLASH INITIALIZE	EXECUTE	Initializes flash memory if installed.
PS FLASH RESIZE	0% [n.n MB] TO 90% [n.n MB], in 10% increments	Changes the size of the flash memory area. "n.n" indicates the actual size in MB. Note: Special data is stored in the Flash Memory, therefore you cannot specify 100%.

CAUTION!

The Disk Maintenance Menu can be used to initialize the printer's internal hard disk drive, to reassign the partition contents, or to reformat the partitions.

It is recommended that disk maintenance be done only by the System Administrator, or by someone who is knowledgeable in this area.

Disk Maintenance Menu

The default settings are **bold**.

Displays only when optional Hard Disk Drive is installed.

Item	Value	Description
HDD INITIALIZE	EXECUTE	Partitions hard disk and formats each partition. Appears only if hard disk drive is installed.
PARTITION SIZE	nnn% / mmm% / xxx%	Sets usage of hard disk drive partitions: nnn = Common mmm = PCL xxx = PS Range for each partition: 1 to 98% in 1% increments. nnn + mmm + xxx = 100%.
HDD FORMATTING	PCL , COMMON, PS	Formats specified partition.

System Adjust Menu

The default settings are **bold**.

Item	Value	Description
X ADJUST	0.00 MM ; Range +0.25 TO +2.0 MM and – 2.0 TO – 0.25 MM in 0.25 mm increments	Adjusts overall print position horizontally in 0.20 increments.
Y ADJUST	0.00 MM ; Range +0.25 TO +2.0 MM and – 2.0 TO – 0.25 MM in 0.25 mm increments	Adjusts overall print position vertically in 0.20 increments.
DUPLEX X ADJUST	0.00 MM ; Range +0.25 TO +2.0 MM and – 2.0 TO – 0.25 MM in 0.25 mm increments	Adjusts overall print position of print face horizontally in 0.20 increments. Displays only when optional Duplex Unit is installed.
DUPLEX Y ADJUST	0.00 MM ; Range +0.25 TO +2.0 MM and – 2.0 TO – 0.25 MM in 0.25 mm increments	Adjusts overall print position of print face vertically in 0.20 increments Displays only when optional Duplex Unit is installed.
TRAY 1 LEGAL 14	LEGAL 14 ; LEGAL 13.5	Sets Tray 1 legal paper size.
TRAY 2 LEGAL 14	LEGAL 14 ; LEGAL 13.5	Sets Tray 2 legal paper size. Appears only if optional Tray 2 is installed.
TRAY 3 LEGAL 14	LEGAL 14 ; LEGAL 13.5	Sets Tray 3 legal paper size. Appears only if optional Tray 3 is installed.
PCL TRAY 2 ID#	1 to 59; default = 5	Sets Tray 2 number for PCL emulation. Appears only if optional Tray 3 is installed.
PCL TRAY 3 ID#	1 – 59; default = 20	Sets Tray 3 number for PCL emulation. Appears only if optional Tray 3 is installed.
PCL MP TRAY ID#	1 – 59; default = 4	Sets MP tray number for PCL emulation.

System Adjust Menu (continued)

The default settings are **bold**.

Item	Value	Description
HEX DUMP	EXECUTE	Press SELECT to switch the printer to the Hexadecimal Dump mode in which all data received is printed in both Hexadecimal and ASCII format. To return to normal print mode, switch the printer off then on again.

Maintenance Menu

The default settings are **bold**.

Item	Value	Description
EEPROM RESET	EXECUTE	Initializes EEPROM for each unit.
SAVE MENU	EXECUTE	Saves the current menu settings.
RESTORE	EXECUTE	Reverts to stored menu settings. (Only displayed if there are saved menu settings).
POWER SAVE	ENABLE ; DISABLE	When no input is received for a specified time, the printer will enter Power Save Mode. See also "Power Save Delay Time" under the System configuration menu on page 45.
PAPER BLACK SETTING	0 ; +1; +2; -2; -1	Not normally used.
PAPER COLOR SETTING	0 ; +1; +2; -2; -1	Not normally used.
TRANSPR BLACK SETTING	0 ; +1; +2; -2; -1	Not normally used.
TRANSPR COLOR SETTING	0 ; +1; +2; -2; -1	Not normally used.

Usage Menu

The default settings are **bold**.

Item	Value	Description
TOTAL PAGE COUNT	nnnnnn	Shows total number of pages printed.
TRAY 1 PAGE COUNT	nnnnnn	Shows number of pages printed from tray 1.
TRAY 2 PAGE COUNT	nnnnnn	Shows number of pages printed from tray 2. Displayed if optional tray 2 is installed.
TRAY 3 PAGE COUNT	nnnnnn	Shows number of pages printed from tray 3. Displayed if optional tray 3 is installed.
MP TRAY PAGE COUNT	nnnnnn	Shows number of pages printed from multipurpose paper tray.
COLOR PAGE COUNT	nnnnnn	Number of pages printed in color.
MONOCHROME PAGE COUNT	nnnnnn	Number of pages printed in monochrome.
BLACK DRUM LIFE	REMAINING nnn%	Displays the remaining life of the black image drum as a percentage.
CYAN DRUM LIFE	REMAINING nnn%	Displays the remaining life of the cyan image drum as a percentage.
MAGENTA DRUM LIFE	REMAINING nnn%	Displays the remaining life of the magenta image drum as a percentage.
YELLOW DRUM LIFE	REMAINING nnn%	Displays the remaining life of the yellow image drum as a percentage.
BELT LIFE	REMAINING nnn%	Displays the remaining life of the belt as a percentage.
FUSER LIFE	Remaining nnn%	Displays the remaining life of the fuser roller as a percentage.
BLACK TONER	15K = xxx%; 5K = xxx%	Displays black toner remaining.
CYAN TONER	15K = xxx%; 5K = xxx%	Displays cyan toner remaining.
MAGENTA TONER	15K = xxx%; 5K = xxx%	Displays magenta toner remaining.
YELLOW TONER	15K = xxx%; 5K = xxx%	Displays yellow toner remaining.

List of Administrator Menu Settings

NOTE

Only system administrators have access to this menu.

To enter this menu, turn on the printer while holding down the ITEM+ button.

OP Menu

The default settings are **bold**.

Item	Value	Description
ALL CATEGORY	ENABLE , DISABLE	Enable/Disable all categories of User Menu. Set to Disable, the User Menu is not shown except the PRINT JOB MENU. Panel Lock is still available.
PRINT JOBS MENU	ENABLE , DISABLE	Enable/Disable PRINT JOBS MENU. Set to Disable, PRINT JOBS MENU is not displayed. (PRINT JOB MENU is displayed when this MENU setting is set to ENABLE even though ALL CATEGORY is set to DISABLE.)
INFORMATION MENU	ENABLE , DISABLE	Enable/Disable INFORMATION MENU. Set to Disable, INFORMATION MENU is not displayed.
SHUTDOWN MENU	ENABLE , DISABLE	Enable/Disable SHUTDOWN MENU. Set to Disable, SHUTDOWN MENU is not displayed.
PRINT MENU	ENABLE , DISABLE	Enable/Disable PRINT MENU. Set to Disable, PRINT MENU is not displayed.
MEDIA MENU	ENABLE , DISABLE	Enable/Disable MEDIA MENU. Set to Disable, MEDIA MENU is not displayed.
COLOR MENU	ENABLE , DISABLE	Enable/Disable color MENU. Set to Disable, color MENU is not displayed.
SYSTEM CONFIG MENU	ENABLE , DISABLE	Enable/Disable SYSTEM MENU. Set to Disable, SYSTEM MENU is not displayed.
PCL EMULATION MENU	ENABLE , DISABLE	Enable/Disable PCL EMULATION MENU. Set to Disable, PCL EMULATION MENU is not displayed.

OP Menu (continued)

The default settings are **bold**.

Item	Value	Description
PPR EMULATION MENU	ENABLE , DISABLE	Enable/Disable PPR EMULATION MENU. Set to Disable, PPR EMULATION MENU is not displayed.
FX EMULATION MENU	ENABLE , DISABLE	Enable/Disable FX EMULATION MENU. Set to Disable, FX EMULATION MENU is not displayed.
PARALLEL MENU	ENABLE , DISABLE	Enable/Disable PARALLEL MENU. Set to Disable, PARALLEL MENU is not displayed.
USB MENU	ENABLE , DISABLE	Enable/Disable USB MENU. Set to Disable, USB MENU is not displayed.
IEEE 1394 MENU	ENABLE , DISABLE	Displayed only when the IEEE 1394 board is installed. Enable/Disable IEEE 1394 MENU. Set to Disable, IEEE 1394 MENU is not displayed.
NETWORK MENU	ENABLE , DISABLE	Displayed only when the Network Interface Card is installed. Enable/Disable NETWORK MENU. Set to Disable, NETWORK MENU is not displayed.
MEMORY MENU	ENABLE , DISABLE	Enable/Disable MEMORY MENU. Set to Disable, MEMORY MENU is not displayed.
DISK MAINTENANCE	ENABLE , DISABLE	Enable/Disable DISK MAINTENANCE MENU. Set to Disable, DISK MAINTENANCE MENU is not displayed.
SYSTEMADJUST MENU	ENABLE , DISABLE	Enable/Disable SYSTEM ADJUST MENU. Set to Disable, SYSTEM ADJUST MENU is not displayed.
MAINTENANCE MENU	ENABLE , DISABLE	Enable/Disable MAINTENANCE MENU. Set to Disable, MAINTENANCE MENU is not displayed.
USAGE MENU	ENABLE , DISABLE	Enable/Disable USAGE MENU. Set to Disable, USAGE MENU is not displayed.
PEAK POWER CONTROL	Normal/Low	Sets PEAK POWER CONTROL.

Color Menu

The default settings are **bold**.

Item	Value	Description
RESET C GAMMA FILTER	EXECUTE	Reset the stored TRC data (retained for tracking).
RESET M GAMMA FILTER	EXECUTE	For example, correct values could not be taken due to "out of order" situation.
RESET Y GAMMA FILTER	EXECUTE	This is mainly for maintenance purposes and <i>not ordinarily used</i> .
RESET K GAMMA FILTER	EXECUTE	

Block Device Menu

The default settings are **bold**.

Item	Value	Description
INITIALIZE LOCK	YES, NO	Change to YES to block the operator panel from showing FLASH INITIALIZE ITEM and PS FLASH RESIZE ITEM in the Disk maintenance and Memory menus.

Peak Power Control Menu

The default settings are **bold**.

Item	Value	Description
PEAK POWER CONTROL	NORMAL , LOW	Sets Peak Power Control.

Setting Color Tuning from the Front Panel

Important!

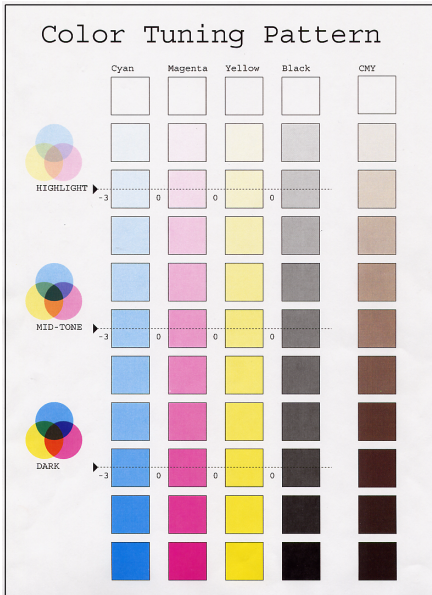
- In most cases, using Color Tuning is not necessary as the printer is optimized for color printing at its default settings.
- Once you change these settings, they remain in effect until you go back in and change them.
- To return the settings to the defaults, use the steps below to set each value back to 0 (zero).

You can use the printer's menu to adjust the color intensity for a specific color by adjusting the HIGHLIGHT, MID-TONE and DARK (shadows) Color Tuning Patterns.

- To *increase* the color intensity, use a higher positive setting (default = 0, maximum = +3).
- To *decrease* the color intensity, use a higher negative setting (default = 0, maximum = -3).

For example, to adjust the intensity of the magenta portion:

1. Print the Color Tuning Pattern:



- a. Make sure letter size paper is loaded in the tray.
 - b. Press the MENU button one or more times, until **COLOR MENU** displays.
 - c. Press the ITEM button one or more times, until **COLOR TUNING** displays.
 - d. Press SELECT.
The Color Tuning Pattern prints.
- ## 2. Adjust the Magenta highlight color.
- a. Press the ITEM button one or more times, until **MAGENTA HIGHLIGHT nn** displays.
 - b. Press the VALUE button one or more times, until the new value you wish to use displays (e.g., +3).
 - c. Press the SELECT button.
An asterisk () appears at the right of the number.*

3. Adjust the Magenta mid-tone color:
 - a. Press the ITEM button one or more times, until **MAGENTA MID-TONE** nn appears.
 - b. Press the VALUE button one or more times, until the new value you wish to use displays (e.g., $nn = +3$).
 - c. Press the SELECT button.
An asterisk () appears at the right of the number.*
4. Adjust the Magenta dark color:
 - a. Press the ITEM button one or more times, until **MAGENTA DARK** nn displays.
 - b. Press the VALUE button one or more times, until the new value you wish to use displays (e.g., $nn = +3$).
 - c. Press the SELECT button.
An asterisk () appears at the right of the number.*
5. Press the ON LINE button to save the new setting and return the printer to online status
6. Print from your application.

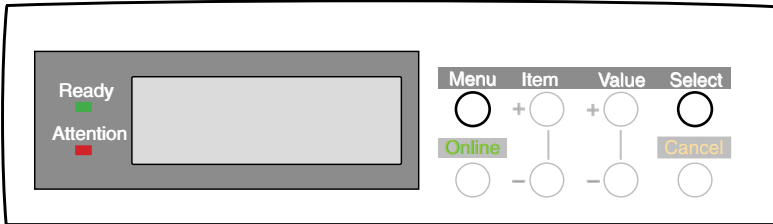
Repeat the above steps until you get the desired magenta color intensity.

NOTE

To adjust these settings for the Cyan, Yellow or Black color intensity, substitute the appropriate color name in the steps above.

Switching Off

In normal circumstances the power save facility should be used to avoid having to switch the printer off. However if you do wish to switch the printer off manually, please carry out the following procedure:



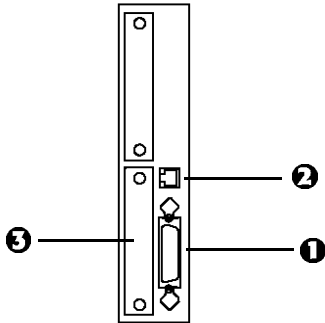
CAUTION!

- **Never** turn the printer off while it is printing.
- If the optional hard disk has been installed, **the following procedure must be followed** before turning off to protect any data that is stored on the hard disk.
- It is recommended that you follow this shutdown procedure each time the printer is switched off for any reason.
- After switching the printer off, wait at least 10 seconds before switching it on again. This allows the internal power levels to drop. **Switching on too soon could cause the printer to malfunction.**

1. Press the MENU button until **SHUTDOWN MENU** is displayed, then press the SELECT button.
2. Press the SELECT button again to begin the shutdown sequence.
3. When **PLEASE POWER OFF SHUTDOWN COMPLETED** is displayed, turn the printer off using the power switch.

Interfaces

Your printer is equipped with a selection of data interfaces:



- 1. Parallel** – For direct connection to a PC. This port requires a bi-directional (IEEE 1284 compliant) parallel cable.
- 2. USB** – For connection to a PC running Windows 98 or above (not Windows 95 upgraded to Windows 98) or Macintosh. This port requires a cable conforming to USB version 1.1 or above.
 - The operation of a printer is not assured if a USB compatible device is connected concurrently with other USB-compatible machines.
 - When connecting multiple printers of the same type, they appear as *****, ***** (2), ***** (3), etc. These numbers depend on the order of connecting or turning on each printer.
- 3. Ethernet** – For network cable connection.

NOTE

Administrator's authority is required when installing a network connection.

See your printed *Software Installation Guide* for information on:

- Making the interface connections
- Installing the printer drivers
- Installing network software

Macintosh OS 8.6-9.2.2

Printer Driver

This section describes how to change the PPD file and how to activate optional accessories in the printer driver, once you have installed them in the printer.

See your printed *Software Installation Guide* for information on installing printer drivers.

Changing the PostScript Printer Description (PPD) File

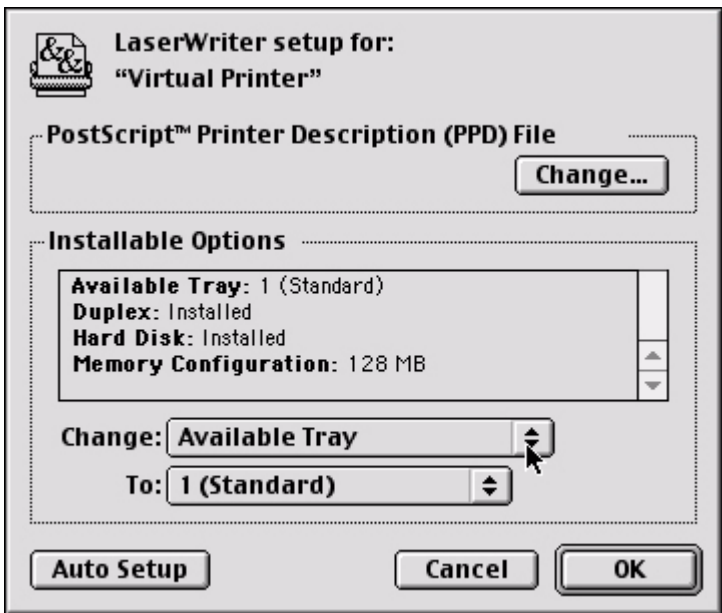
The printer's correct settings are controlled by the PostScript® Printer Description (PPD) file. To change the PPD file:

1. Select the **Desktop Printer** and leave it highlighted.
2. From the **Menu**, click **Printing** → **Change Setup...**
3. Click **Change** and select the desired file.
4. Click **Select** to activate the Description file.

Activating Optional Trays in the Driver

If you install the optional paper tray(s), you must reset the number of available trays to activate them.

1. Select the **Desktop Printer** and leave highlighted.
2. From the **Menu**, click **Printing** → **Change Setup...** The current setup appears under Installable Options. To manually alter the setup:
 - a. Beside **Change**, click the down arrow and select **Available Tray**.
 - b. Beside **To**, click the number of trays installed. For example, your printer might be installed with 2 trays, so you would select **2 (1 Optional Tray)**.

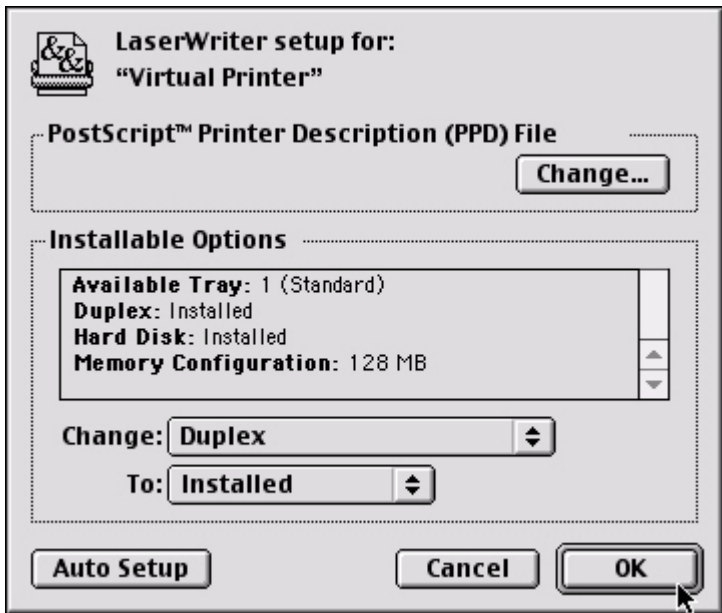


3. Click **OK** to save and exit.

Activating the Optional Duplex Unit in the Driver

Once you have installed the optional duplex unit, you must activate it:

1. Select the **Desktop Printer** and leave highlighted.
2. From the **Menu**, click **Printing** → **Change Setup...** The current setup appears under Installable Options. To manually alter the setup:
 - a. Beside **Change**, click the down arrow and select **Duplex**.
 - b. Beside **To**, click **Installed** or **Not Installed** to enable. A check mark ✓ appears for the current selection.

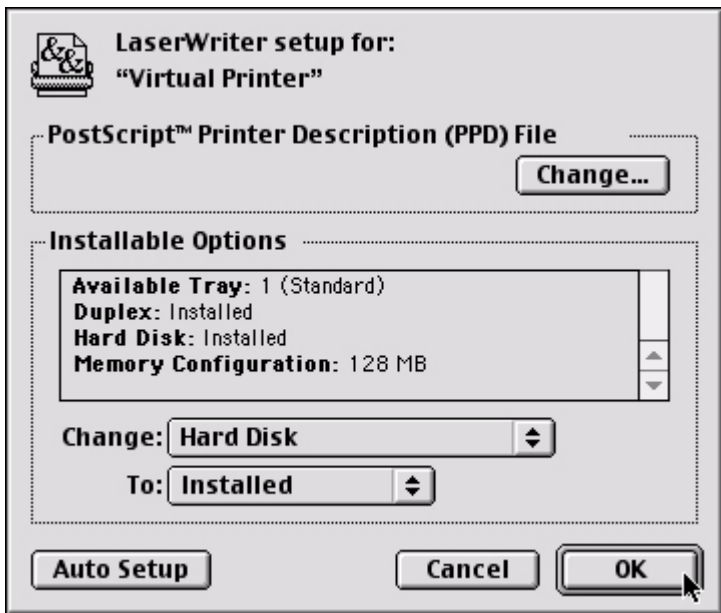


3. Click **OK** to save and exit.

Activating the Optional Hard Disk Drive in the Driver

Once you install the optional hard disk drive, you must activate it:

1. Select the **Desktop Printer** and leave highlighted.
2. From the **Menu**, click **Printing** → **Change Setup...** The current setup appears under Installable Options. To manually alter the setup:
 - a. Beside **Change**, click the down arrow and select **Hard Disk**.
 - b. Beside **To**, click **Installed** or **Not Installed** to enable. A check mark ✓ appears for the current selection.

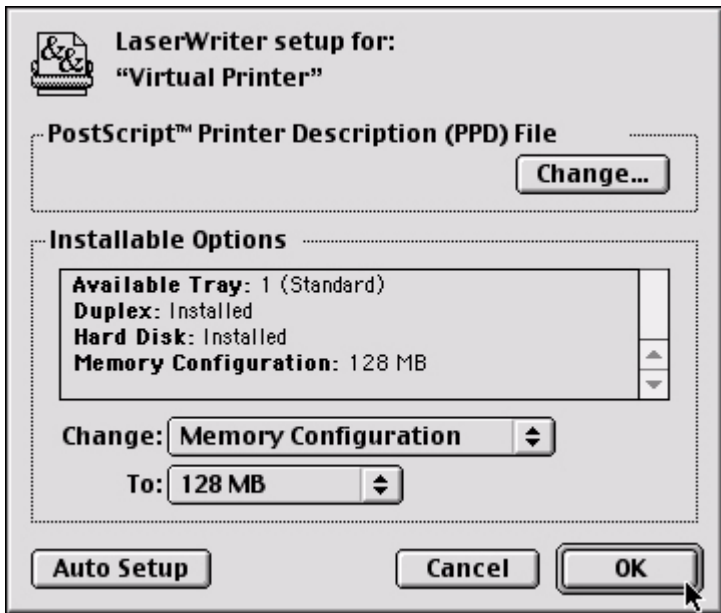


3. Click **OK** to save and exit.

Activating Added Optional Memory in the Driver

Once you have installed additional memory in the printer, this allows you to set the new total amount of memory available.

1. Select the **Desktop Printer** and leave highlighted.
2. From the **Menu**, click **Printing** → **Change Setup...** The current setup appears under Installable Options. To manually alter the setup:
 - a. Beside **Change**, click the down arrow and select **Memory Configuration**.
 - b. Beside **To**, select from the drop down list the correct amount of memory that is installed in the printer. A check mark ✓ appears for the current selection.



3. Click **OK** to save and exit.

Macintosh OS 8.6-9.2.2

Operation

The preceding section on Printer Drivers explained how to set up the default operation of the various features using the Desktop Printer Setup.

This section explains how to change the printer's operation for specific print jobs directly from within an application.

Most applications allow the printer properties to be accessed from within the document print dialog.

This section will only detail options as they apply to the LaserWriter 8 driver. Refer to manufacturer's guidelines regarding other driver operations, for example the AdobePS driver.

Color Print Matching

The install utility provides a color matching profile for your printer, as well as **Color Option** utility in the print driver. In general, using the **Auto** settings will provide reasonable default settings that produce good results for most documents.

Many applications have their own color settings and these may override the settings in the printer driver. Please refer to the documentation for your software application for details on how that particular program's color management functions.

Factors that Affect the Appearance of Printed Documents

If you wish to manually adjust the color settings in your printer driver, please be aware that color reproduction is a complex topic, and there are many factors to take into consideration. Some of the most important factors are listed below.

Differences between the Range of Colors a Monitor or Printer Can Reproduce

- Neither a printer nor a monitor is capable of reproducing the full range of colors visible to the human eye. Each device is restricted to a certain range of colors. Additionally, a printer cannot reproduce all of the colors displayed on a monitor and vice versa.

- Both devices use very different technologies to represent color. A monitor uses Red, Green and Blue (RGB) phosphors (or LCDs), a printer uses Cyan, Yellow, Magenta and Black (CMYK) toner or ink.
- A monitor can display very vivid colors such as intense reds and blues and these cannot be easily produced on any printer using toner or ink. Similarly, there are certain colors, (some yellows, for example), that can be printed, but cannot be displayed accurately on a monitor. This disparity between monitors and printers is often the main reason that printed colors do not match the colors displayed on screen.

Viewing Conditions

A print can look very different under different lighting conditions. For example, the colors in a print may look different when viewed standing next to a sunlit window, compared to how they look under standard office fluorescent lighting.

Printer Driver Color Settings

The driver settings for Manual color can change the appearance of a print. There are several options available to help match the printed colors with those displayed on screen. These options are explained in subsequent sections of the User Manual.

To access the color matching options in the driver discussed below:

1. Access the printer settings page via the Print dialog from any application (usually accessed via **File** → **Print**).
2. Click the **General** drop down menu and select **Color Option**.

Monitor Settings

The brightness and contrast controls on your monitor can change how your document looks on-screen. Additionally, your monitor color temperature influences how "warm" or "cool" the colors look.

NOTE

Several of the Color Matching options make reference to your monitor's Color Temperature. Many modern monitors allow the color temperature to be adjusted using the monitor's control panel.

There are several settings found on a typical monitor:

- **5000k or D50** Warmest; yellowish lighting, typically used in graphics arts environments.
- **6500k or D65** Cooler; approximates daylight conditions.
- **9300k** Cool; the default setting for many monitors and television sets.

(k = degrees Kelvin, a measurement of temperature)

How Your Software Application Displays Color

Some graphics applications such as Macromedia Freehand or Adobe Photoshop may display color differently from "office" applications such as Microsoft Word. Please see your application's online help or user manual for more information.

Paper Type

The type of paper used can also significantly affect the printed color. For example, a printout on recycled paper can look duller than one on specially formulated glossy paper.

Choosing a Color Matching Method

There is no one correct way to achieve a good color match between the document displayed on your monitor, and its printed equivalent. There are many factors involved in achieving accurate and reproducible color.

However, the following guidelines may help in achieving good color output from your printer. There are several suggested methods, depending on the type of document you are printing.

RGB or CMYK?

NOTE

These suggestions are for guidance only. Your results may vary depending on the application from which you are printing. Some applications will override any color matching settings in the printer driver without warning.

The guidelines for choosing a color matching method makes distinctions between Red, Green, Blue (RGB) and Cyan, Magenta, Yellow, Black (CMYK).

Generally, most office documents you print will be in RGB format. This is the most common, and, if you do not know your document's color mode, assume that it is RGB.

Typically CMYK documents are only used in professional Desktop Publishing and Graphics applications.

Matching Photographic Images

RGB Only

The standard Color Matching (found in the printer driver under Color Matching) is a generally a good choice. Select a matching method appropriate to your monitor.

RGB or CMYK

If you are printing photographic images from a graphics application such as Adobe Photoshop, you may be able to use Soft-Proofing to simulate the printed image on your monitor. To do this, you can use the ICC-Profiles provided and then print using the ICC profiles as the Print Space (or Output space).

Matching Specific Colors

(For instance, a Company logo.)

RGB Only

- Standard Color Matching, and the sRGB setting.
- PostScript Color Matching using the Absolute Colorimetric option.
- Use the Color Swatch Utility to print out a chart of RGB swatches and enter your desired RGB values in your application's color picker.

RGB or CMYK

- If you are printing from a graphics application such as Adobe Photoshop, you may be able to use Soft-Proofing to simulate the printed image on your monitor. To do this, you can use the ICC-Profiles provided and then print using the ICC profiles as the Print Space (or Output space).
- Alternatively, use PostScript Color Matching with the Absolute Colorimetric setting.

Printing Vivid Colors

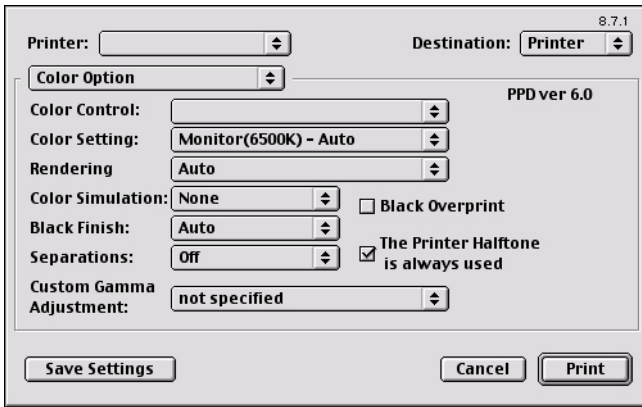
RGB Only

- Use Color Matching, with either the Monitor 6500k Vivid, sRGB or Digital Camera settings.

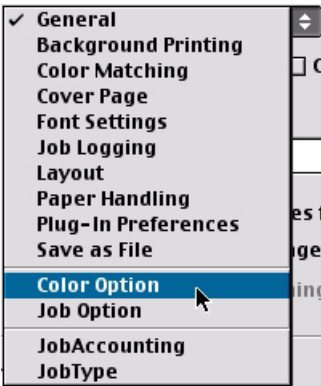
RGB or CMYK

- Use PostScript Color Matching with the Saturation option.

Color Option



1. Open your printer driver (by choosing **File** → **Print** from an application) and select your Sharp printer.
2. Open the drop-down menu directly underneath the printer and select **Color Option**.



Color Control

Color Control allows you to determine the scheme in which the printer will display colors. Select from:

- **Sharp Color Matching**

This affects *RGB data only*. This is the default setting and provides the fastest, best color matching for your printer.

- **Postscript Color Matching**

This uses PostScript Color Rendering Dictionaries built-in to the printer, and affects both RGB and CMYK data.

- **No Color Matching**

No color correction occurs when selected. This option is beneficial when other matching regimens are used, specifically if you select a Color Simulation option.

- **Print In Grayscale**

No color will print. The printer will interpret all colors as a variation of grays.

Color Setting

This option allows you to select your color settings as they appear on your monitor.



Select the option desired:

- **Monitor(6500k) Auto**

The default setting that selects the best options for your printer. This selection works best for office situations.

- **Monitor (6500k) Perceptual**

Optimized for printing photographs when using a monitor with a color temperature of 6500K, This is best for printing photographic images.

- **Monitor (6500k) Vivid**

Optimized for printing bright colors when using a monitor with a color temperature of 6500K. Ideal for office graphics and text. Vivid or Digital Camera settings produce brightest colors.

- **Monitor (9300k)**

Optimized for printing photographs when using a monitor with a color temperature of 6500K.

- **Digital Camera**

Optimized for printing photographs taken with a digital camera. This tends to produce prints with lighter and brighter colors. For some photographs, other settings may be better depending on the subjects and the conditions under which they were taken. Vivid or Digital Camera settings produce brightest colors.

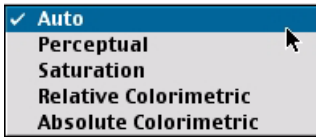
- **sRGB**

Optimized for matching specific colors, such as a company logo color. This option attempts to simulate RGB color. The colors within the printer's color gamut are printed without any modification, and only colors that fall outside the printable colors are modified.

Rendering

When a document is printed, a conversion takes place from the document's color space to the printer color space. The rendering intents are essentially a set of rules that determine how this color conversion takes place.

Select the option desired:



- **Auto**

The best default select as this selects the optimal settings for a general office environment.

- **Perceptual**

Best choice for printing photographs. Compresses the source gamut into the printer's gamut whilst maintaining the overall appearance of an image. This may change the overall appearance of an image as all the colors are shifted together.

- **Saturation**

Best choice for printing bright and saturated colors if you don't necessarily care how accurate the colors are. This makes it the recommended choice for graphs, charts, diagrams etc. Maps fully saturated colors in the source gamut to fully saturated colors in the printer's gamut.

- **Relative Colorimetric**

Good for proofing CMYK color images on a desktop printer. Much like Absolute Colorimetric, except that it scales the source white to the (usually) paper white; i.e. unlike Absolute Colorimetric, this attempts to take the paper white into account.

- **Absolute Colorimetric**

Best for printing solid colors and tints, such as Company logos etc. Matches colors common to both devices exactly, and clips the out of gamut colors to their nearest printed equivalent. Tries to print white as it appears on screen. The white of a monitor is often very different from paper white, so this may result in color casts, especially in the lighter areas of an image.

Color Simulation

Affects **CMYK output only** and is usually used in offset printer environments only.



This option simulates what the output will look on a printing press using the ink types SWOP, Euroscale or Japan. If using CMYK Ink Simulation, it is recommended that you switch off all other Printer Color Matching by selecting No Color Matching under the Color Match option in the printer driver.

Select the option desired.

Black Finish

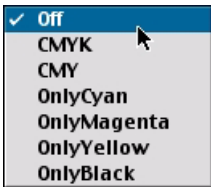
This setting determines Black Toner usage only.



- **Auto**
This option is best for an office environment, with the printer determining which style is better.
- **Glossy**
This option uses more CMYK and less Black while producing a shinier black.
- **Matte**
This option uses more Black and less CMYK while producing a flatter black.

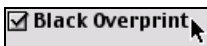
Separations

This option affects output only, allowing you to print all colors or separate plates.



Black Overprint

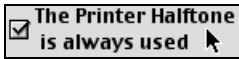
This option prevents registration errors and only works for 100% black text.



Click the checkbox to enable the option.

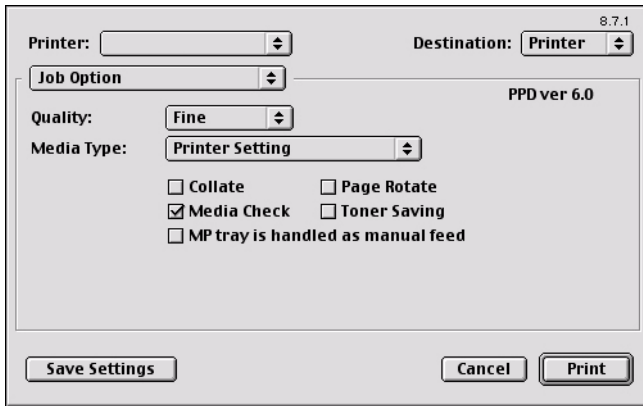
Printer Halftone

This option prevents the halftone of a high-end graphics application from printing.



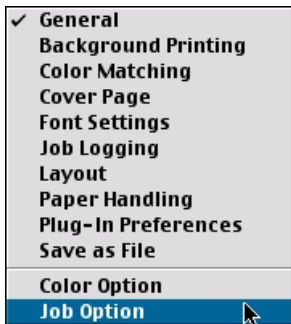
Click the checkbox to enable the option.

Job Option



To access Job Option:

1. Select your printer from the drop-down list.
2. Open the drop-down list directly below **Printer:** and select **Job Option**.



3. Make the desired selections.

Quality

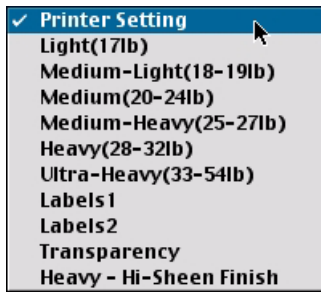
A straightforward selection of the print quality desired.



- Fast: 600 x 600 dpi
- Fine: 1200 x 1200 dpi

Media Type

Many options are available for selecting the type of the print media. Normally the Printer Setting is sufficient.



Select your desired Media Type (see page 39 for more information).

NOTE

Any selection, other than Printer Setting will override the printer's Menu setting.

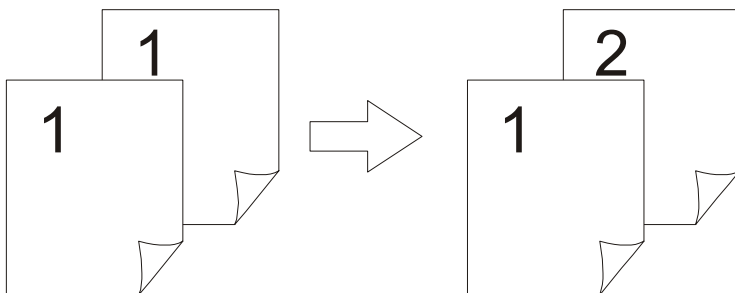
Miscellaneous Selections

<input type="checkbox"/> Collate	<input type="checkbox"/> Page Rotate
<input checked="" type="checkbox"/> Media Check	<input type="checkbox"/> Toner Saving
<input type="checkbox"/> MP tray is handled as manual feed	

Collate

Collating can be carried out with or without a hard disk drive installed. However, printers with a hard disk drive will provide greater performance. This option is useful when printing multiple copies of large documents and wish for them to be printed in sequence.

Click to enable collation of your documents.



Media Check

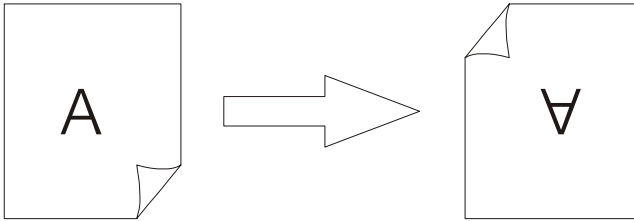
Sets whether the printer checks the matching of paper size to that of the tray. Only standard sizes are checked.

MP tray is handled as manual feed

Selecting this will cause the MP tray to be used in manual feed situations. The MP tray *cannot* be used for duplex printing.

Page Rotate

Checking this will rotate the printed material on the page 180 degrees.



Toner Saving

Checking this will enable toner saving.

Job Type Plug-in

This plug-in allows you to utilize features through the printer's optional hard disk drive.

NOTE

- **The internal hard disk must be installed in the printer and enabled to allow for spooling of the print job before final printing.**
- **If the hard disk memory is insufficient for the spooled data, DISK FULL is displayed and only one copy printed.**
- **If the software application being used has a collate print option, this must be turned OFF for secure printing to operate correctly.**
- **Secure printing may not be available in some software applications.**

To access Job Type,

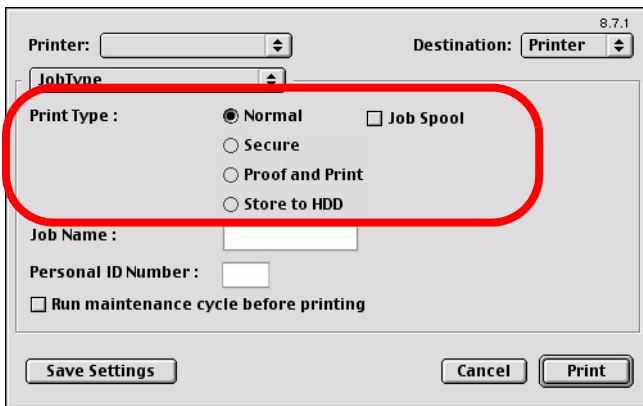
1. Select your printer.

2. Open the drop-down menu directly underneath the printer and select **Job Type**.



Each feature on the Job Type screen is detailed below.

Print Type



From here you select the type of printing you wish to use.

- **Normal**
The default setting.
- **Job Spool**
Lets you spool your print job to the printer's hard drive.

- **Secure (see page 94)**

Allows you to print confidential documents on network printers by storing them on the printer's hard drive, then going to the printer and using the control panel to print out the document.

- **Proof and Print (see page 95)**

Allows printing of a single copy of a document for checking before printing multiple copies of the same document.

- **Store to HDD (see page 97)**

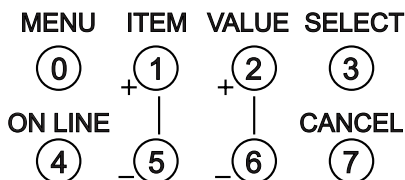
Allows print jobs to be stored on the hard disk for future printings.

Secure Print

To send a confidential document to the printer using Secure Print:

1. Select the **Secure** option.
2. Enter a job name of up to 16 characters next to **Job Name** and a four digit personal ID number in the **ID Number** box.
3. Press **Print** to proceed with your print job. The document will be stored on the printer's hard disk.
4. Walk up to the printer to print out the document using the front panel (see below).

To print a confidential document



1. Press the MENU button to access the PRINT JOBS MENU and press the SELECT button.
2. Use the numbered buttons on the control panel to enter the personal ID number you set above.
3. Press the VALUE button until ALL JOBS or the required job name is displayed.

4. Press the SELECT button.

The document will print and be deleted from the hard disk drive.

To delete a confidential document before printing it

1. Press the MENU button to access the **PRINT JOBS MENU** and press the SELECT button.
2. Use the numbered buttons on the control panel to enter the personal ID number you set above.
3. Press the VALUE button until **ALL JOBS** or the required job name is displayed.
4. Press the CANCEL button to delete the job from the printer.

Proof and Print

NOTES

- **The internal hard disk must be installed in the printer and enabled, to allow for spooling of the print job before final printing.**
- **If the hard disk memory is insufficient for the spooled data, DISK FULL is displayed and only one copy is printed.**
- **If the software application being used has a collate print option, it must be turned OFF for proof and print to operate correctly.**
- **Proof and print may not be available in some software applications.**

Using Proof and Print

1. Select **Proof and Print**.
2. Enter a job name of up to 16 characters under **Job Name Setting** and a four digit personal ID number.
3. Click **Print** to proceed with your print job. Print the document from the software application being used. The document will be stored on the printer's hard disk and one copy will print for your perusal.

4. After checking the proof, you then will print or delete (if incorrect) the remaining copies of the document using the procedures given below.

Printing the copies of a Proof and Print document

1. Press the MENU button to access the **PRINT JOBS MENU**, then press the SELECT button.
2. Use the numbered buttons on the control panel to enter the personal ID number you set above.
3. Press the VALUE button until **ALL JOBS** or the required job name is displayed.
4. Press the SELECT button to print the remaining copies of the document.

Deleting a Proof and Print document before printing the copies

If the proof is not ready for printing, the job must be deleted from the printer:

1. Press the MENU button to access the PRINT JOBS MENU and press the SELECT button.
2. Use the numbered buttons on the control panel to enter the personal ID number you set above.
3. Press the VALUE button until **ALL JOBS** or the required job name is displayed.
4. Press the CANCEL button to delete the remaining copies of the document.
5. When the deletion confirmation message appears, confirm by pressing the SELECT button.

Store To Hard Disk

NOTES

- The internal hard disk must be installed in the printer and enabled to allow for spooling of the print job before final printing.
- If the hard disk memory is insufficient for the spooled data, DISK FULL is displayed and only one copy printed.
- If the software application being used has a collate print option, this must be turned OFF for store to hard disk to operate correctly.
- Store to hard disk may not be available in some software applications.

Using Store to Hard Disk

1. Select **Store to HDD**.
2. Enter a job name of up to 16 characters under **Job Name** and a four digit personal ID number.
3. Click **Print** to proceed with your print job. The document will be stored on the printer's hard disk.
4. The document can then be printed or deleted using the procedures given below.

Printing a document stored on the hard disk

MENU	ITEM	VALUE	SELECT
①	+ ②	+ ③	④
ON LINE			CANCEL
⑤	- ⑥	- ⑦	⑧

1. Press the MENU button to access the **PRINT JOBS MENU** and press the SELECT button.
2. Use the numbered buttons on the control panel to enter the personal ID number you set above.

3. Press the VALUE button until **ALL JOBS** or the required job name is displayed.
4. Press the SELECT button to print the document.

Deleting a stored document from the hard disk drive

1. Press the MENU button to access the **PRINT JOBS MENU** and press the SELECT button.
2. Use the numbered buttons on the control panel to enter the personal ID number you set above.
3. Press the VALUE button until **ALL JOBS** or the required job name is displayed.
4. Press the CANCEL button to delete the remaining copies of the document.
5. When the deletion confirmation message appears, confirm by pressing the SELECT button.

Run Maintenance Cycle Before Printing

The screenshot shows a printer settings dialog box with the following elements:

- Printer: [Dropdown menu]
- Destination: Printer [Dropdown menu]
- JobType: [Dropdown menu]
- Print Type:
 - Normal
 - Secure
 - Proof and Print
 - Store to HDD
 - Job Spool
- Job Name: [Text input field]
- Personal ID Number: [Text input field]
- Run maintenance cycle before printing (highlighted with a red circle)
- Buttons: Save Settings, Cancel, Print

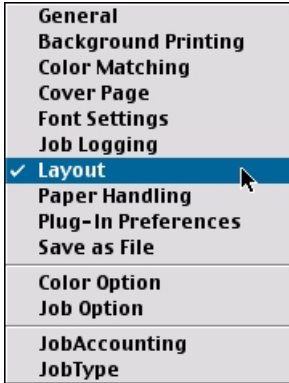
Selecting **Run Maintenance Cycle Before Printing** forces the printer to automatically clean itself before printing. This option allows you to improve your print quality if there is a problem with printing such as too much graininess.

Printing Using Special Features

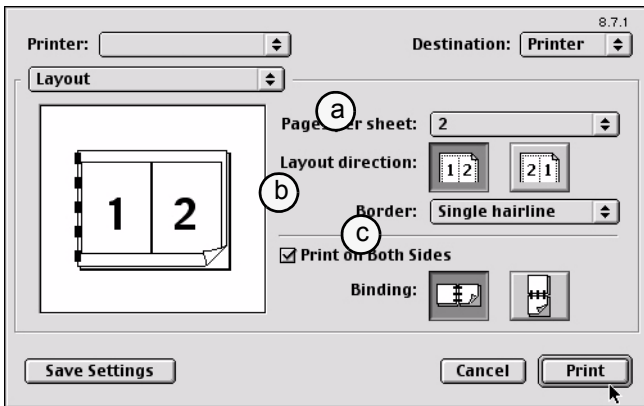
Multiple Pages on One Sheet

To print multiple pages on one sheet (N-Up printing):

1. Select your printer.
2. Open the drop-down menu directly underneath the printer and select **Layout**.



3. From the Layout screen, select the options desired.



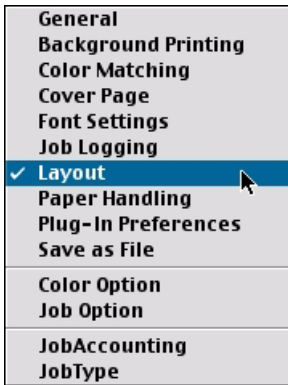
- a. Set the number of pages to be printed under **Pages per sheet**
- b. Select the desired orientation (portrait or landscape).

- c. Select a border between the sheets, if desired.
4. Click **Print** to print or **Save Settings** to save and close the printer dialog box.

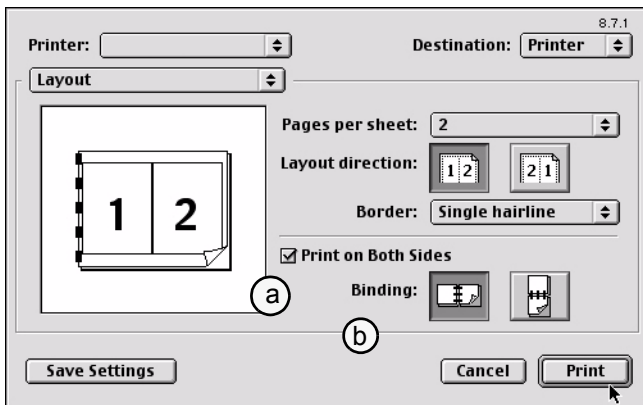
Duplex Printing

To print on both sides of the paper:

1. Select your desired Sharp printer.
2. Open the drop-down menu directly underneath the printer and select **Layout**.



3. From the Layout screen, select the options desired.



- a. For Duplexing (printing on both sides of the sheet), select **Print on Both Sides**.
- b. Select which **Binding** you prefer.

NOTES

- Duplex printing can only be carried out on standard paper sizes and paper weights between 20 and 28 lb. (75 and 105 g/m²).
- The optional duplex unit must be installed in the printer and enabled before duplex printing can be carried out.
- Paper must be loaded into the paper tray with the print side facing upwards. The multi purpose tray cannot be used for duplex printing.

4. Click **Print** to print or **Save Settings** to save and close the printer dialog box.

Collating

Collating can be carried out with or without the optional hard disk drive (see page 171). However, using the HDD will improve performance.

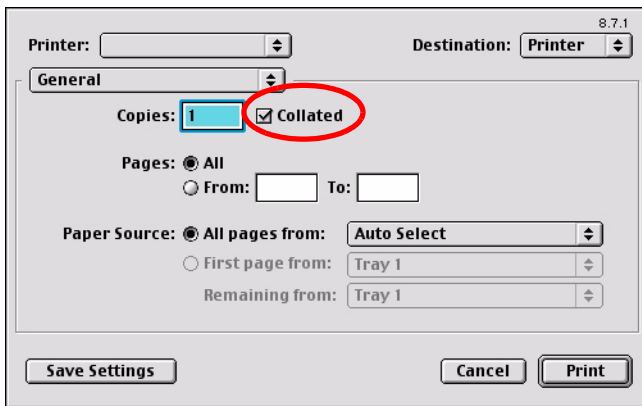
If the software application being used has a collate print option, it is recommended to use only one collate option to prevent any conflicts in printing, i.e. collate from the software application or collate from the printer driver.

1. Select your printer.

2. The **General** dialog box should already be displayed. If not, then select **General** from the menu.



3. Select **Collated**.



4. Click **Print**.

Mac OS 8.6-9.2.2 Utilities

General Information

Important!

These Utilities are unavailable for Mac OS 10.1.5.

The following utilities are supplied:

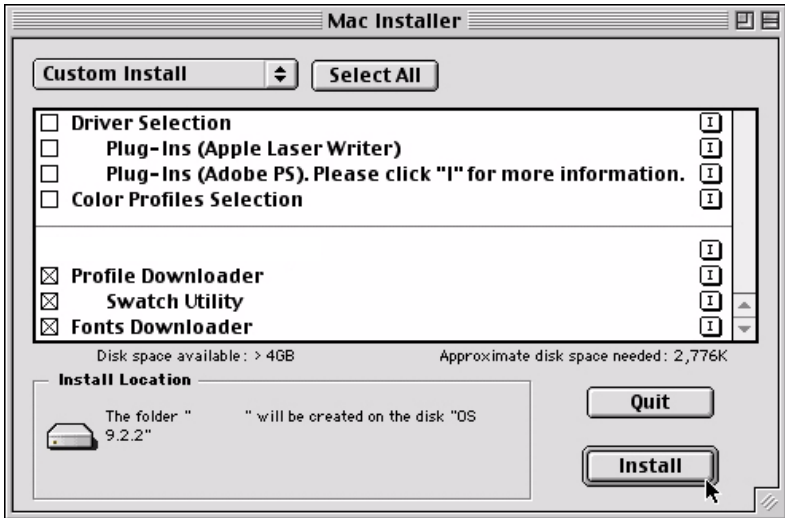
- **Fonts Downloader (see page 105)**
This utility allows you to transfer fonts to the printer's RAM or optional hard disk and to manage fonts on your PostScript printer. This utility is an Adobe product and will not be supported by Sharp. Please see the Read Me file for further information.
- **Color Swatch Utility (see page 106)**
The Color Swatch Utility allows you to print color samples or swatches on your color printer. The swatches are used with your software program to select and reproduce color accurately. The swatches represent selected samples of the your printer's color palette and can be used to find the desired colors for your printed documents
- **Net Utility for EtherTalk (see page 108)**
This utility allows you to adjust some of the parameters of your printer, such as the Zone and Name used for the printer on your network.

Installing the Utilities

1. Insert the CD supplied with your printer into the CD-ROM drive.
2. Double-click the CD icon that appears on the desktop.
3. Open the **MAC** folder.
4. Click **Mac** → **PSDRV** → **English**, then double click the **Mac Installer** icon.



5. Click **Continue**.
6. Select **Custom Install** to access the Utility Installation.



7. Click the boxes beside the Utilities you wish to install, then click the **Install** button.
The Utilities install into the folder you specify during the installation process.

Fonts Downloader

This utility allows you to transfer fonts to the printer's RAM or hard disk and to manage fonts on your PostScript printer. This utility is an Adobe product and will not be supported by Sharp. Please see the Read Me file for further information.

Important!

This utility will only communicate with the printer via AppleTalk and is incompatible with USB connections.

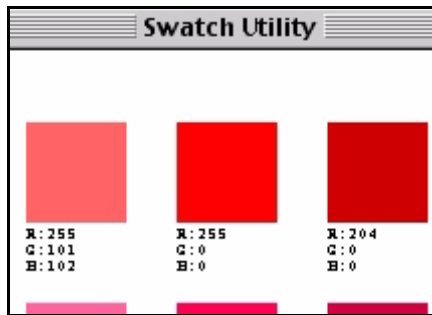
Color Swatch Utility

Things To Remember:

- Your software may not be able to match colors using the information provided by the swatch files. In that case, you may need to use other means of matching.
- Many other factors influence how you see color: the color and finish of the paper, the light you are using, even the colors surrounding the one you are identifying.
- The swatches represent selected samples of your printer's color palette and can be used to find the desired colors for your printed documents.

Open Color Swatch

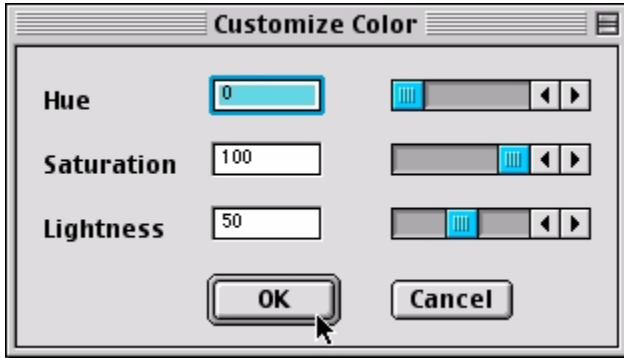
Click **Local Hard Drive** → **Sharp** → **Swatch Utility** and double-clicking the file. You are presented with the Simple Swatch. The Simple Swatch covers the commonly used colors.



Each color block, or sample, is identified with information your software package needs to reproduce that color accurately. The numbers under each block specify the amounts of the primary colors—red (R), green (G), and blue (B), that mix to form each particular shade. The amounts are given as a numerical value between 0 and 255.

Create a Custom Swatch

1. If the color you are seeking is not in the Simple Swatch, create a new color by selecting **Custom Swatch** from the **File** menu.



2. Drag the handles as required and press **OK** to create the new color.
 - **Hue** bar changes the hue of the swatches, for example, red to green or blue to yellow.
 - **Saturation** bar changes vividness.
 - **Lightness** bar changes light intensity.
3. The utility then creates many different possibilities from which you can choose.
4. Once satisfied, print the swatch from the menu using **File** → **Print** or repeat the steps to find the color desired.

NOTE

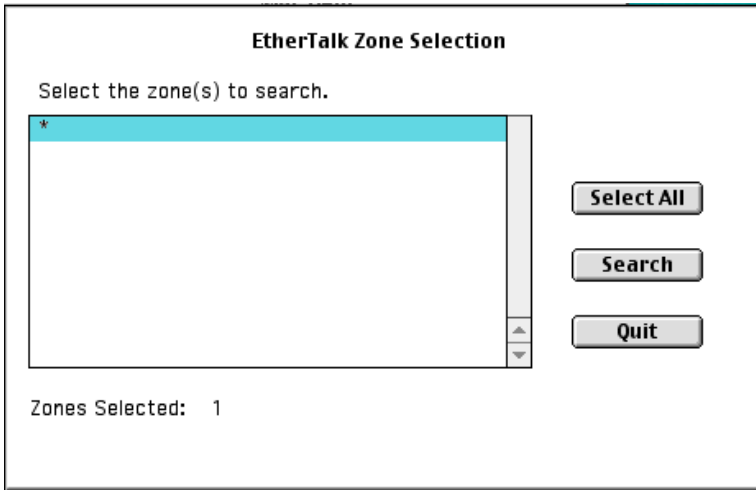
- **Swatch utility does not guarantee that the printer will print the same color as displayed; consider this only as a reference from which you can adjust parameters.**
 - **The printer may not be able to print the exact color that you desire.**
- For additional information, including **Applying Color Value in your Application**, and **Setting Monitor Color**, see the Swatch Utility ReadMe file located in the Mac folder.

Net Utility for EtherTalk

This utility allows changing the Zone and Name of the Sharp printer on a network.

Rename Printer/Zone

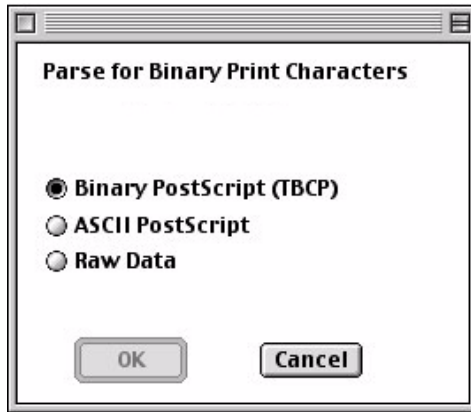
1. After opening the Net Utility application, press the **Search** button to select the printer you wish to name.



2. Then, once found, follow the directions by pressing **Command+N** on the keyboard to rename the printer or **Command+Z** to select the zone for the printer.
3. Alternatively, you can use the Menu at this point to rename/change printers/zones.

Configure	Reset
Name ⌘N	
Type ⌘T	t
Zone ⌘Z	
Parsing	

Change Parse Type



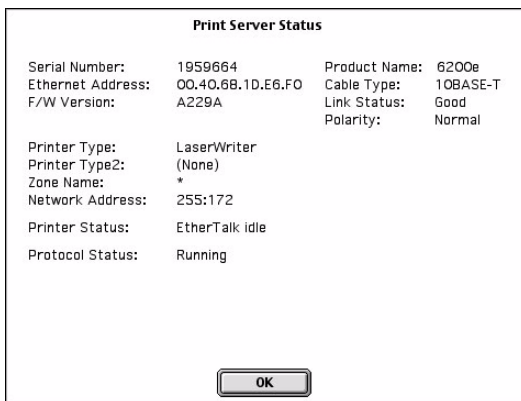
1. After selecting the printer, from the menu select **Configure** → **Parsing**.
2. Select the option desired and press **OK** to enable.

Print Config

1. After selecting the printer, from the menu select **File** → **Print Config** to gain a printout of the current configuration.

Check Print Server Status

1. After selecting the printer, from the menu select **File** → **Status**.



2. You will be presented with the *Status* screen. Press **OK** to return to close.

Configure Printer Type

1. After selecting the printer, from the menu select **Configure — Type**.

Change Type of Print Server

Current Type1:
LaserWriter

Current Type2:
(None)

Select New Type:
LEDWriter

Change Type 1 **Change Type 2** **Remove Type 2** **Cancel**

2. Enter the new name in and press **Change Type 1**. If you have altered **Current Type 2**, you would press the **Change Type 2** button.

Reset/Restore



1. To reset the board or restore the defaults, from the menu select **Reset** and then the option desired. The program will ask if you intend to complete the task, answer accordingly.

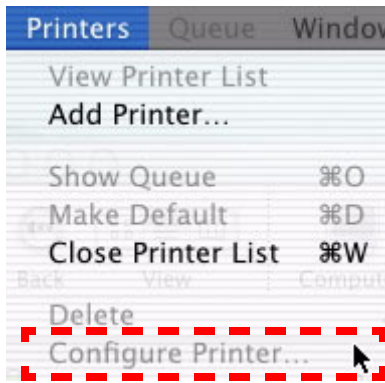
Macintosh OS 10.1.5

Printer Driver

See your printed *Software Installation Guide* for information on installing printer drivers.

Adjusting options

Apple Computer has not enabled **Configure Printer...** as of release OS 10.1.5. Therefore, direct configuration of the printer driver is unavailable at this time.



Macintosh OS 10.1.5

Operation

This section explains how to change the printer's operation for specific print jobs.

Most applications allow the printer properties to be accessed from within the document print dialog.

This section will only detail options as they apply to the Sharp printer driver.

Color Print Matching

The install utility provides a color matching profile for your printer. In general, using the **Color Matching** settings will provide reasonable default settings that produce good results for most documents.

Many applications have their own color settings and these may override the settings in the printer driver. Please refer to the documentation for your software application for details on how that particular program's color management functions.

Factors That Affect the Appearance of Printed Documents

If you wish to manually adjust the color settings in your printer driver, please be aware that color reproduction is a complex topic, and there are many factors to take into consideration. Some of the most important factors are listed below.

Differences between the Range of Colors a Monitor or Printer Can Reproduce

- Neither a printer nor a monitor is capable of reproducing the full range of colors visible to the human eye. Each device is restricted to a certain range of colors. Additionally, a printer cannot reproduce all of the colors displayed on a monitor and vice versa.
- Both devices use very different technologies to represent color. A monitor uses Red, Green and Blue (RGB) phosphors (or LCDs), a printer uses Cyan, Yellow, Magenta and Black (CMYK) toner or ink.
- A monitor can display very vivid colors such as intense reds and blues and these cannot be easily produced on any printer using

toner or ink. Similarly, there are certain colors, (some yellows, for example), that can be printed, but cannot be displayed accurately on a monitor. This disparity between monitors and printers is often the main reason that printed colors do not match the colors displayed on screen.

Viewing Conditions

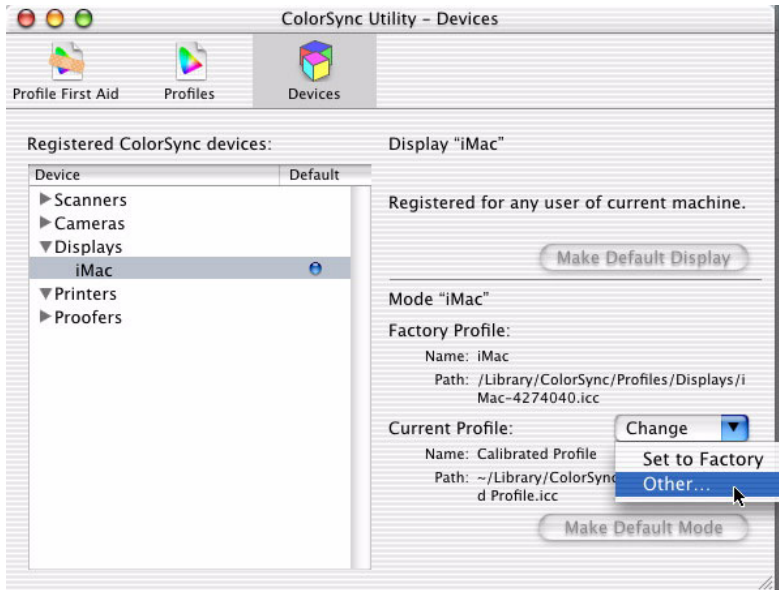
A print can look very different under different lighting conditions. For example, the colors in a print may look different when viewed standing next to a sunlit window, compared to how they look under standard office fluorescent lighting.

Monitor Color Profile Select

Apple provides a **ColorSync Utility** → **Devices** that allows selection of the Sharp supplied ICC color profile for your monitor. The profile will attempt to calibrate the monitor to more closely match the printer's output. However, merely selecting the profile will not automatically produce perfect results as many factors will contribute to the gamut of color selection.

1. Navigate to the utility by accessing your **Local Hard Drive** → **Applications** → **Utilities** → **ColorSync Utility**.

2. Click the arrow next to **Displays** and select your monitor (in this example it is iMac). For **Current Profile**, select **Other...**



3. From the **Profile** selection menu, click the desired Sharp ICC Profile, then press **Open** to enable it.

Color Profile Select: Apple ColorSync

Not to be confused with the **ColorSync Utility** → **Devices**, Apple also provides a System Preference utility, **ColorSync**, for selection of color profiles for the printer and documents.

1. Click **System Preferences** → **ColorSync**.
2. On the **Device Profiles** tab, select your Sharp **Output** profile.
3. On the **Document Profiles** tab, for the CMYK Default option, highlight the Sharp profile desired.

Printer Driver Color Settings

The driver settings for Manual color can change the appearance of a printed document. There are several options available to help match the printed colors with those displayed on screen. These options are explained in subsequent sections.

To access the color matching options in the driver discussed below:

1. Access the printer settings page via the Print dialog from any application (usually **File** → **Print**).
2. Click the drop down menu and select **Printer Features** and then select the **Features 2** tab for **Color Control**.

Monitor Settings

The brightness and contrast controls on your monitor can change how your document looks on-screen. You can calibrate your monitor's color regimen in **System Preferences** → **Displays** → **Color**. Additionally, your monitor color temperature influences how "warm" or "cool" the colors look.

NOTE

Several of the Color Matching options make reference to your monitor's Color Temperature. Many modern monitors allow the color temperature to be adjusted using the monitor's control panel.

There are several settings found on a typical monitor:

- **5000k or D50**
Warmest; yellowish lighting, typically used in graphics arts environments.
 - **6500k or D65:**
Cooler; approximates daylight conditions.
 - **9300k:**
Cool; the default setting for many monitors and television sets.
- (k = degrees Kelvin, a measurement of temperature)

How Your Software Application Displays Color

Some graphics applications such as Macromedia Freehand or Adobe Photoshop may display color differently from "office" applications such as Microsoft Word. Please see your application's online help or user manual for more information.

Paper Type

The type of paper used can also significantly affect the printed color. For example, a printout on recycled paper can look duller than one on specially formulated glossy paper.

Choosing a Color Matching Method

There is no one correct way to achieve a good color match between the document displayed on your monitor, and its printed equivalent. There are many factors involved in achieving accurate and reproducible color.

However, the following guidelines may help in achieving good color output from your printer. There are several suggested methods, depending on the type of document you are printing.

NOTE

These suggestions are for guidance only. Your results may vary depending on the application from which you are printing. Some applications will override any color matching settings in the printer driver without warning.

RGB or CMYK?

The guidelines for choosing a color matching method makes distinctions between Red, Green, Blue (RGB) and Cyan, Magenta, Yellow, Black (CMYK).

Generally, most office documents you print will be in RGB format. This is the most common, and, if you do not know your document's color mode, assume that it is RGB.

Typically CMYK documents are only used in professional Desktop Publishing and Graphics applications.

Matching Photographic Images

RGB Only

The standard Color Matching—found in the printer driver under **Printer Features** → **Features 2**—is a generally a good choice. Select a matching method appropriate to your monitor.

RGB or CMYK

If you are printing photographic images from a graphics application such as Adobe Photoshop, you may be able to use Soft-Proofing to simulate the printed image on your monitor. To do this, you can use the ICC-Profiles provided by Sharp, and then print using the ICC profiles as the Print Space (or Output space).

Matching Specific Colors

(For instance, a Company logo.)

RGB Only

- Standard Color Matching, and the sRGB setting.
- PostScript Color Matching using the Absolute Colorimetric option.

RGB or CMYK

- If you are printing from a graphics application such as Adobe Photoshop, you may be able to use Soft-Proofing to simulate the printed image on your monitor. To do this, you can use the ICC-Profiles provided and then print using the ICC profiles as the Print Space (or Output space).
- Alternatively, use PostScript Color Matching with the Absolute Colorimetric setting.

Printing Vivid Colors

RGB Only

- Use the provided Color Matching, with either the Monitor 6500k Vivid, sRGB or Digital Camera settings.

RGB or CMYK

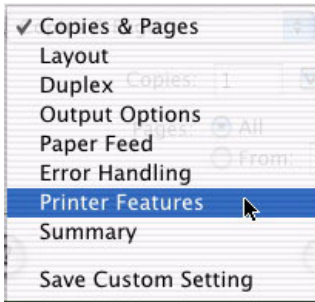
- Use PostScript Color Matching with the Saturation option.

Driver Options

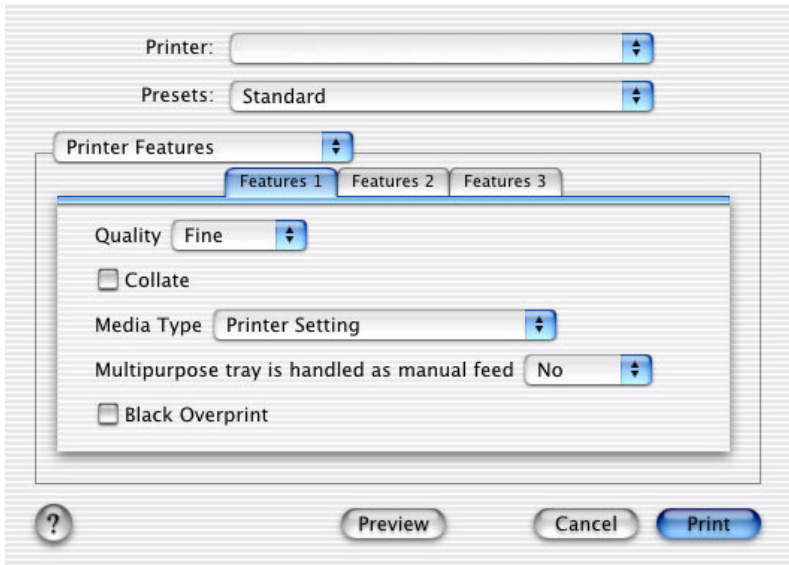
Sharp Printer Features

To access **Features 1**:

1. Select your printer.
2. Open the drop-down menu at left and select **Printer Features**.



Features 1



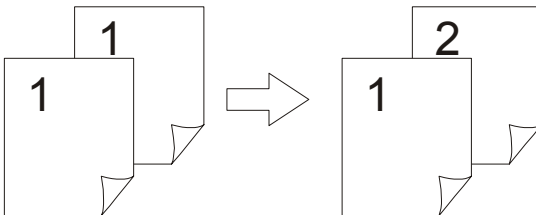
Select from the following Features 1 options:

Quality



- Fast: 600 x 600 dpi
- Fine: 1200 x 1200 dp

Collate



Collating can be carried out with or without a hard disk drive installed. However, printers with a hard disk drive will provide greater performance. This option is useful when printing multiple

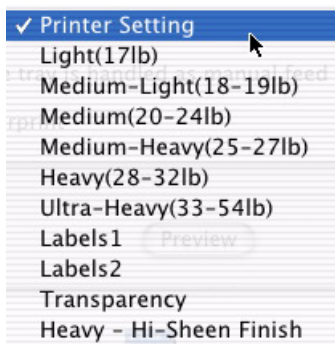
copies of large documents and you want to print them in sequence.

NOTE

If your software application has a collate option, use it instead of the collate option in the printer driver.

Media Type

Many options are available for selecting the thickness of the media. Normally the **Printer Setting** is used.



Select your desired Media Type (see page 39 for more information). Any option, other than **Printer Setting**, will override the printer's menu setting.

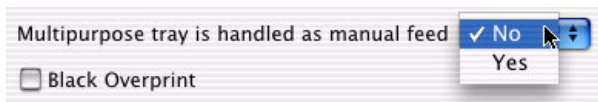
MP tray is handled as manual feed

Select the option desired: the default is No. The MP tray *cannot* be used for duplex printing.

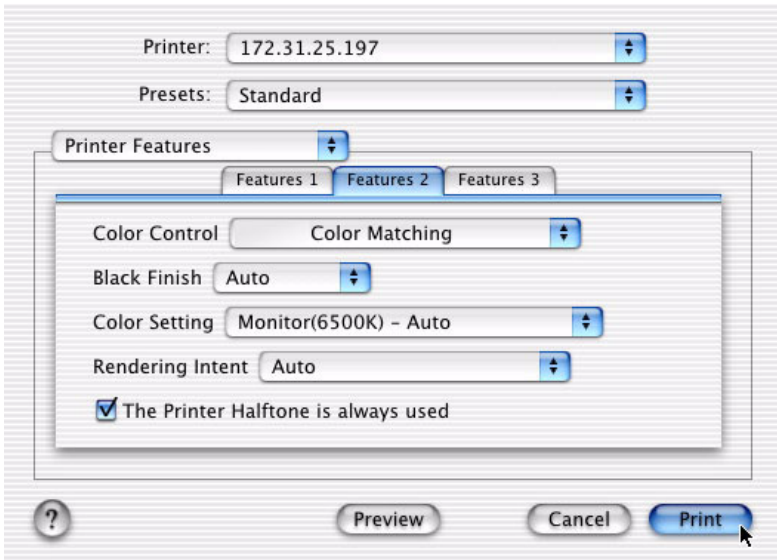
Black Overprint

This option prevents registration errors and only works for 100% black text.

Click the checkbox to enable the option.

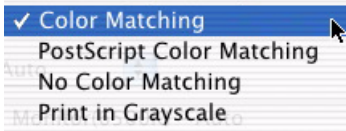


Features 2



Select from the following Features 2 options:

Color Control



Sharp Color Matching

This affects *RGB data only*. This is the default setting and provides the fastest, best color matching for your printer.

Postscript Color Matching

This uses PostScript Color Rendering Dictionaries built-in to the printer, and affects both RGB and CMYK data.

No Color Matching

No color correction occurs when selected. This option is beneficial when other matching regimens are used, specifically if you select a Color Simulation option.

Print In Grayscale

No color will print. The printer will interpret all colors as a variation of grays.

Black Finish

This setting determines Black Toner usage only.



Auto

This option is best for an office environment, with the printer determining which style is better.

Glossy

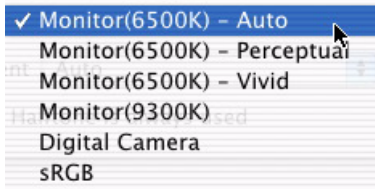
This option uses more CMYK and less Black while producing a shinier black.

Matte

This option uses more Black and less CMYK while producing a flatter black.

Color Setting

This option allows you to select your color settings as they appear on your monitor.



Monitor(6500k) Auto

The default setting that selects the best options for your printer. This selection works best for office situations.

Monitor (6500k) Perceptual

Optimized for printing photographs when using a monitor with a color temperature of 6500K, This is best for printing photographic images.

Monitor (6500k) Vivid

Optimized for printing bright colors when using a monitor with a color temperature of 6500K. Ideal for office graphics and text. Vivid or Digital Camera settings produce brightest colors.

Monitor (9300k)

Optimized for printing photographs when using a monitor with a color temperature of 6500K.

Digital Camera

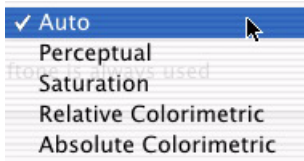
Optimized for printing photographs taken with a digital camera. This tends to produce prints with lighter and brighter colors. For some photographs, other settings may be better depending on the subjects and the conditions under which they were taken. Vivid or Digital Camera settings produce brightest colors.

sRGB

Optimized for matching specific colors, such as a company logo color. This option attempts to simulate RGB color. The colors within the printer's color gamut are printed without any modification, and only colors that fall outside the printable colors are modified.

Rendering Intent

When a document is printed, a conversion takes place from the document's color space to the printer color space. The rendering intents are essentially a set of rules that determine how this color conversion takes place.



Auto

The best default select as this selects the optimal settings for a general office environment.

Perceptual

Best choice for printing photographs. Compresses the source gamut into the printer's gamut whilst maintaining the overall appearance of an image. This may change the overall appearance of an image as all the colors are shifted together.

Saturation

Best choice for printing bright and saturated colors if you don't necessarily care how accurate the colors are. This makes it the recommended choice for graphs, charts, diagrams, etc. Maps fully saturated colors in the source gamut to fully saturated colors in the printer's gamut.

Relative Colorimetric

Good for proofing CMYK color images on a desktop printer. Much like Absolute Colorimetric, except that it scales the source white to the (usually) paper white; i.e. unlike Absolute Colorimetric, this attempts to take the paper white into account.

Absolute Colorimetric

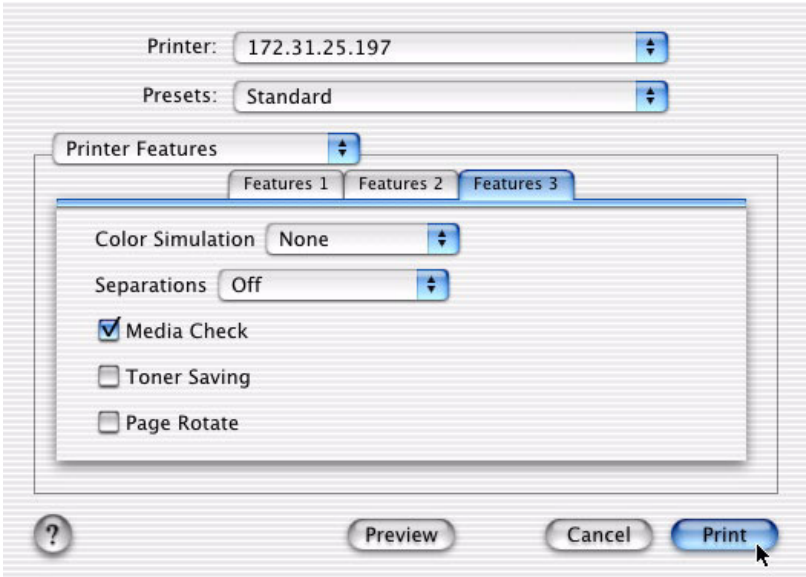
Best for printing solid colors and tints, such as Company logos etc. Matches colors common to both devices exactly, and clips the out of gamut colors to their nearest printed equivalent. Tries to print white as it appears on screen. The white of a monitor is often very different from paper white, so this may result in color casts, especially in the lighter areas of an image.

Printer Halftone

This option prevents the halftone of a high-end graphic application from printing. Click the checkbox to enable the option.

The Printer Halftone is always used

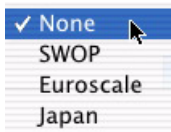
Features 3



Select from the following Features 3 options:

Color Simulation

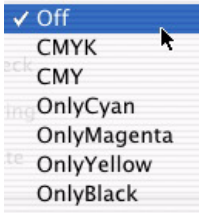
Affects CMYK output only and is usually used in offset printer environments only.



This option simulates what the output will look on a printing press using the ink types SWOP, Euroscale or Japan. If using CMYK Ink Simulation, it is recommended that you switch off all other Printer Color Matching by selecting the No Color Matching option under the Color Match option in the printer driver.

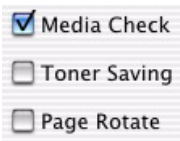
Separations

This option affects output only, allowing you to print all colors or separate plates.



NOTE

You must select a non-generic PostScript Printer Description (PPD) file for a printer that supports color separations.



Media Check

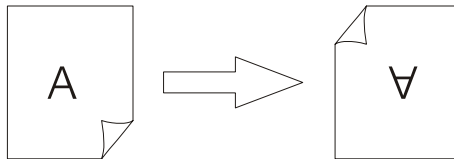
Sets whether the printer checks the matching of paper size to that of the tray. Only standard sizes are checked.

Toner Saving

Checking this will enable toner saving but reduce print quality.

Page Rotate

Checking this will rotate the printed material on the page 180 degrees.

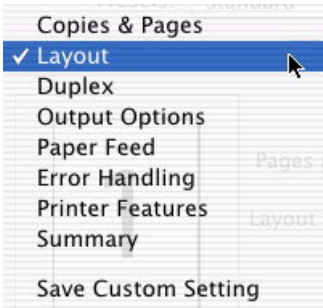


Printing Using Special Features

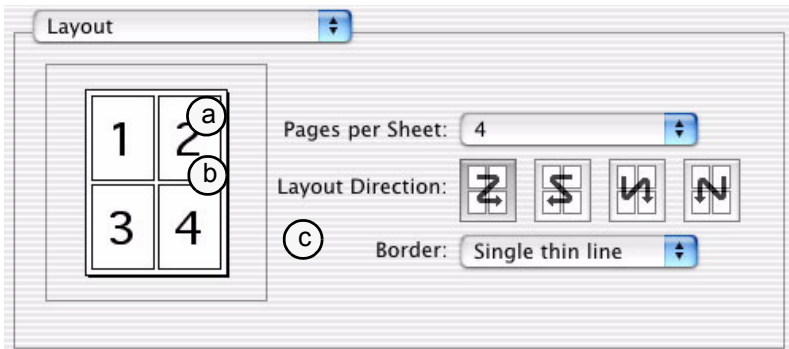
Multiple Pages on One Sheet

To print multiple pages on one sheet (N-Up printing):

1. Select your printer.
2. Open the drop-down menu at left and select **Layout**.



3. From the Layout screen, select the options desired.

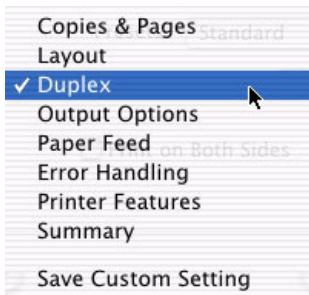


- a. For Multiple Pages, access **Pages per sheet**
- b. Select the desired **Layout Direction**.
- c. Select a **Border** between the sheets, if desired.

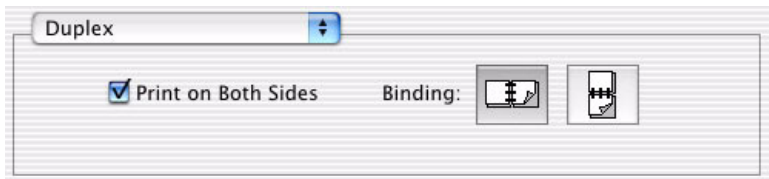
Duplex Printing

To print on both sides of the paper:

1. To access, first select your printer.
2. Then open the drop-down menu at left and select **Duplex**.



3. From the **Duplex** screen, select the options desired.



- a. For Duplexing (printing on both sides of the sheet), select **Print on Both Sides**.
- b. Select which **Binding** you prefer. Normally, the first option is the default.

NOTES

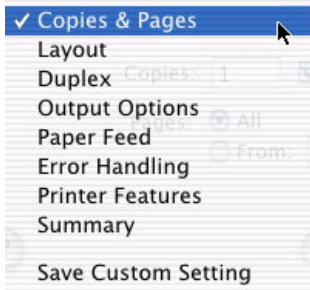
- Duplex printing can only be carried out on standard paper sizes and paper weights between 20 and 28 lb. (75 and 105 g/m²).
- The optional duplex unit must be installed in the printer and enabled before duplex printing can be carried out.
- Paper must be loaded into the paper tray with the print side facing upwards. The multi purpose tray cannot be used for duplex printing.

Collating

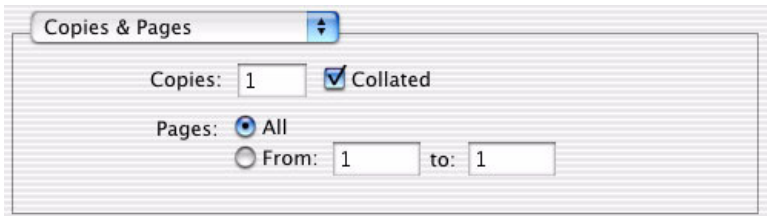
Collating can be carried out with or without the optional hard disk drive (see page 171). However, using the HDD will improve performance.

If the software application being used has a collate print option, it is recommended to use only one collate option to prevent any conflicts in printing, i.e. collate from the software application or collate from the printer driver.

1. Select your printer.
2. The **Copies & Pages** dialog box should display. If not, select **Copies & Pages** from the menu.



3. Select **Collated**.



4. Click **Print**.

Mac OS 10.1.5 Utilities

Important!

All Utilities on the installation CD are unavailable for Mac OS 10.1.5 and will only run on Mac Classic OS.

Troubleshooting

LCD Messages

The liquid crystal display (LCD) on the control panel indicates the printer status and if there is a problem with the printer. Status and error messages are listed below together with an explanation of what each message means:

Summary of LCD Messages

LCD Message	Meaning
**** DRUM NEAR LIFE	An image drum is nearing the end of its life. (**** indicates color)
**** EMPTY	Warning that Tray **** is empty. MP Tray is Tray 0.
**** NEAR END	The paper in the selected **** is nearly finished. (**** indicates paper tray).
**** TONER LOW	Toner is low (**** indicates color).
**** TONER SENSOR ERROR	Error with the toner sensor (**** indicates color). Call for service.
BELT UNIT MISSING	Transfer belt unit is missing.
CANCELLING JOB	Cancelling the current job.
CHANGE **** IMAGE DRUM	Change the image drum (**** indicates color).
CHANGE BELT UNIT	Change the transfer belt.
CHANGE FUSER UNIT	Change the fuser unit.
CHANGE PAPER TO ****	Paper must be changed to correct paper size and/or media type (**** indicates size or media type).
CHECK ****	Check Tray **** for paper jam. MP tray is Tray 0.
CHECK BELT UNIT	Check the transfer belt for paper jam, correct installation, etc.
CHECK DUPLEX	Check the duplex unit for paper jam, correct installation, etc.
CHECK FUSER UNIT	Check the fuser unit for paper jam, correct installation, etc.
CHECK IMAGE DRUM	Check the image drum for correct installation, etc. Color will be indicated.
COLLATE FAIL	Collating of multiple copies has failed.
COLOR ADJUSTING	Adjusting head so that colors do not shift on to each other.
COLOR BALANCE ADJUST	Adjust the color balance.
COMMUNICATION ERROR	There is an error with communications to computer.

Summary of LCD Messages (continued)

LCD Message	Meaning
DATA ARRIVE	Data has been received but processing has not started yet.
DATA PRESENT	Un-printed data remains in buffer. Waiting for data to follow.
DISK FILE OPERATION FAILED	Error with hard disk operations.
DISK FILESYSTEM IS FULL	Hard disk/flash memory full.
DISK FULL	The internal hard drive is full.
EEPROM INITIALIZE ERROR	Call for service.
EMPTY	Indicates which paper tray is empty.
ERROR POSTSCRIPT	A PostScript error has occurred.
FATAL ERROR	Call for service.
FUSER UNIT MISSING	Fuser unit is missing.
INSTALL ADDITIONAL MEMORY	Additional memory is required before job can be printed.
INSTALL NEW IMAGE DRUM	Install a new image drum. Color will be indicated.
INSTALL NEW TONER	Install a new toner cartridge. Color will be indicated.
INSTALL PAPER CASSETTE	Install the paper cassette. Paper tray will be indicated.
INVALID DATA	Data is incorrect.
LOAD	Load correct paper size/type. Size/type will be indicated.
MEDIA MISMATCH	Paper type set via menu does not match that sent via driver.
NETWORK ERROR	Network error.
OFFLINE	Shows off line status.
ONLINE	Shows on line status.
OPEN UPPER COVER	Open the upper cover.
PAPER JAM	Indicates there is a paper jam.
PAPER SIZE ERROR	Indicates wrong paper size.
PLEASE POWER OFF	Printer must be switched off after disk/flash initialization.
POWER SAVE	The printer is in power save mode.
PRINTING	Data is being printed.
PROCESSING	Data is being processed.

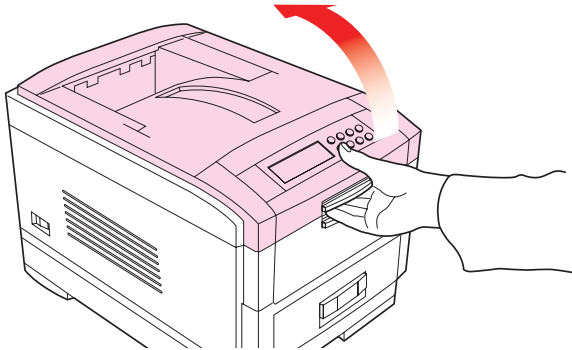
Summary of LCD Messages (continued)

LCD Message	Meaning
RAM CHECK	RAM is being checked after switching printer on.
REGISTRATION ADJUST TEST	Registration adjustment being tested.
REGISTRATION ERROR	An error has occurred setting up the registration.
REMOVE THE PAPER	Indicates wrong paper being used.
RS232C FRAMING ERROR	Serial framing error. Check configuration of serial card.
RS232C OVERFLOW ERROR	Serial overflow error. Check configuration of serial card.
RS232C OVERRUN ERROR	Serial overrun error. Check configuration of serial card.
RS232C PARITY ERROR	Serial parity error. Check configuration of serial card.
SERVICE CALL	A serious error has occurred. Call for service.
SHUTDOWN	Starts the shutdown procedure to protect the file system on hard disk.
SIZE MISMATCH	Change paper to correct size/type. Press On-line to continue.
STACKER FULL	Stacker is full. Remove the paper.
UNSUITABLE SIZE	Indicates wrong paper size.
USB I/F ERROR	USB interface error has occurred.
WARMING UP	The printer is warming up.

Paper Jams

Paper jams are indicated by an error message on the display. Paper jams are cleared as follows:

1. Open the top cover of the printer.

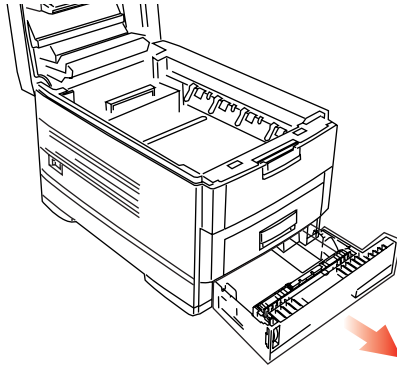


NOTE

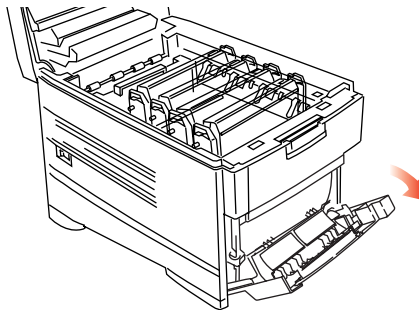
Do not close the top cover *completely* (until it latches) during this process. If the top cover is closed too soon, the paper jam error will not be cleared.

To minimize possible damage to the drums due to exposure to light, lower the top cover when appropriate, but do not press down to latch it.

- 2. Check the paper tray:** Pull out the paper tray and remove any jammed paper from the printer, then gently push the paper tray back in.

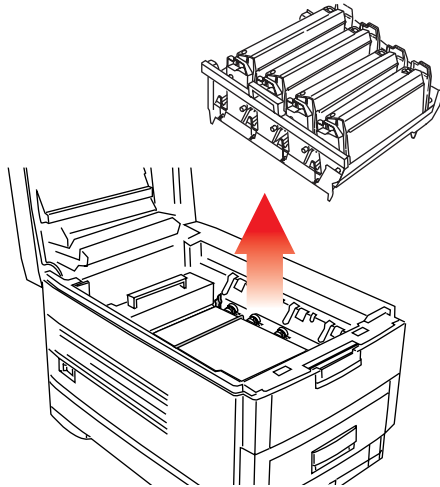


- 3. Check behind the front cover.** Open the front cover and remove any jammed paper, then close the front cover.



4. Check the transfer belt.

- a. Remove all four image drums as one unit in their cradle, and place the cradle on a *flat* surface to prevent damage to the shiny green surface on the bottom of the drums.



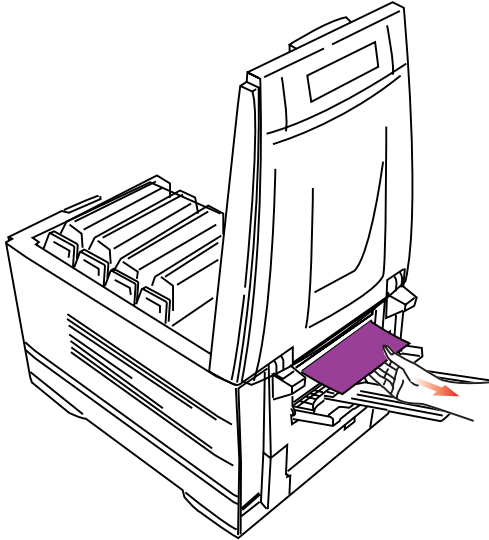
CAUTION!

To avoid damage to the drums:

- Be careful to place the drums on a flat surface so that nothing contacts the shiny green surface in the bottom of the drum.
- Keep the image drums away from light.

- b. Carefully remove any jammed paper from the transfer belt and top paper exit.
- c. Replace all four image drums as one unit into the printer.

- 5. Check behind the rear cover:** open the rear cover and remove any jammed paper, then close the rear cover.

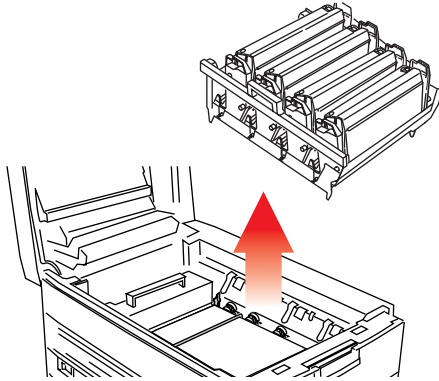


6. Check the fuser unit:

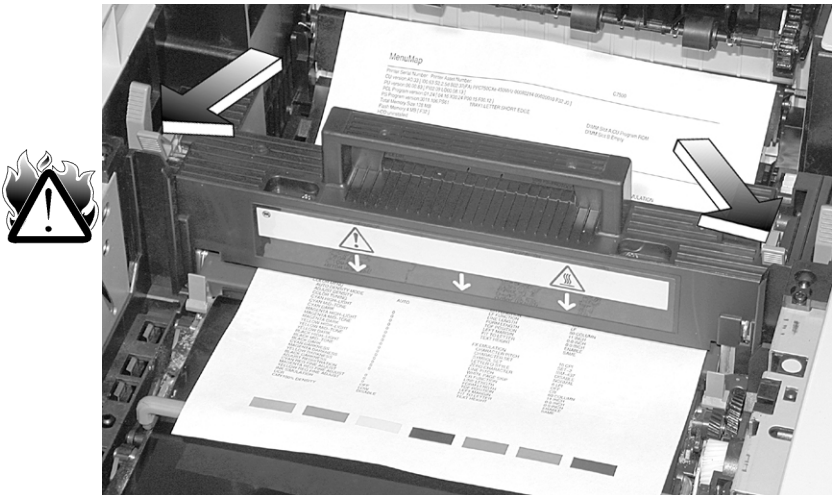
WARNING!

The fuser unit is very hot after printing. Always use the handle when lifting it.

- a. If necessary, lift out the toner/drum cradle to access the jammed page.



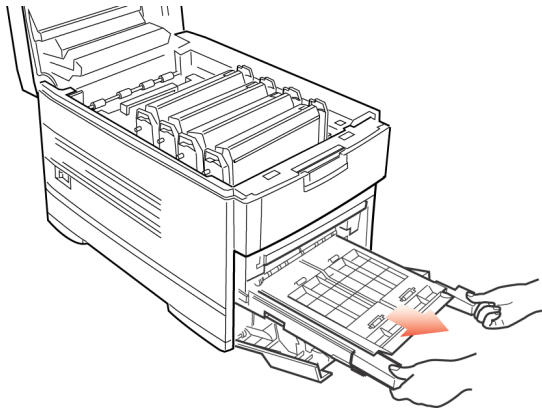
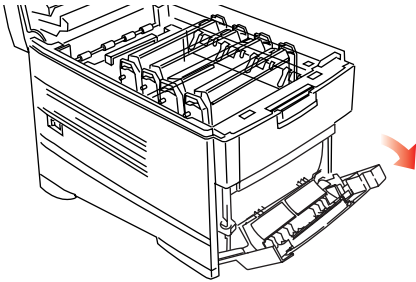
- a. Release the fuser roller lock levers at either end of the fuser and slowly remove the jammed paper.



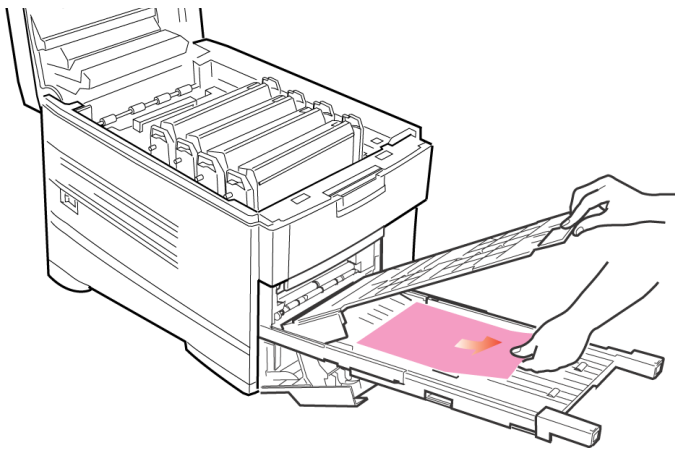
- b. Re-lock the levers at either end of the fuser.

7. Check the duplex unit (if installed).

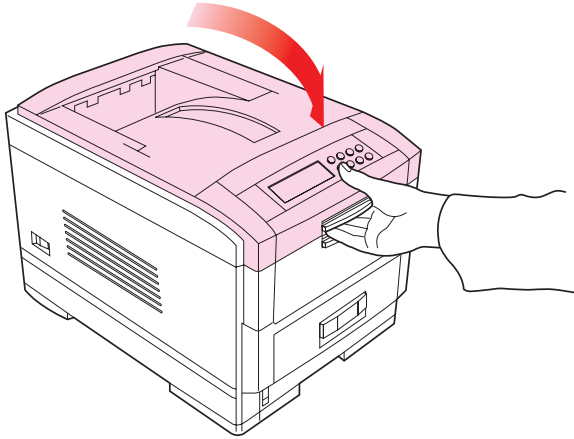
- a. Open the front cover, then slide out the duplex unit.



- b. Open the duplex top cover and remove any jammed paper.



- c. Close the duplex top cover and slide the duplex unit back into the printer.
 - d. Close the front cover.
- 8. Check any additional paper trays:** if any optional paper tray(s) are installed, pull them out and check that no paper is jammed along the various parts of the exit path.
- 9. Close the top cover.**



Problem Solving

Paper Feed Problems

If paper jams are frequent:

- More than one sheet feeds at a time.
- Paper curls.
- Paper feeds at an angle.

Possible Cause	Remedy
The printer is not horizontal.	Place the printer on a stable, level surface.
The paper is too thin.	Use the correct type of paper (see Specifications).
The paper is moist or affected by static.	Store paper within specified temperature and humidity levels.
The paper is creased or wrinkled.	Remove the creased/wrinkled paper from the feed tray.
The paper is not aligned correctly.	Adjust tray or manual feed guides.
Paper doesn't feed.	Correct paper feed selection in the printer driver.

Paper jam has been cleared, but printer does not print.

Possible Cause	Remedy
The top cover has not remained open until all paper jams have been cleared.	Removing a paper jam is not sufficient: Raise and <i>gently</i> lower the top cover, especially if the paper jam has been removed from behind the front cover.

Problems Printing

Cannot configure for USB connection.

Possible Cause	Remedy
USB cable does not meet specifications.	Use USB cable to specification Ver.1.1.
Interface is disabled.	Check that USB interface is set to Enable.
Configuration procedure was not correctly followed or cancelled.	Configure again from the beginning.
USB cable is disconnected or faulty.	Reconnect or try another cable.
A USB hub is being used.	The printer cannot be used with a USB hub. Connect the printer and computer directly.

Cannot print.

- **PRNUSBX WRITE ERROR** is displayed.

Possible Cause	Remedy
Printer is switched OFF.	Switch ON.
Printer interface cable is disconnected.	Reconnect the printer interface cable.
A converter, buffer, extension cable or USB hub is being used.	Test by connecting the printer and computer directly.
Printer driver output port is incorrect.	Set correct output port to which the printer interface cable is connected.
Printer is not selected in the printer driver.	Select the printer or set to default printer.
Incorrect printer driver is being used.	Delete this printer driver and install correct printer driver.

Application error or general protection fault is displayed.

Possible Cause	Remedy
Memory is insufficient for number of applications running.	Close all other applications.
Print file is corrupted.	Correct or recreate the file.
Memory is insufficient for application.	Increase computer's memory.
Insufficient free space on hard disk.	Delete unnecessary files.
Printer driver is incorrectly configured.	Correctly configure printer driver.

Printing is slow.

Possible Cause	Remedy
Print processing is carried out by the computer.	Use a computer with a faster processor.
Print resolution is set high.	Set lower print resolution in the printer driver.
Data is too complex.	Simplify data.

Printer requests paper size change to continue printing.

Possible Cause	Remedy
Paper loaded in tray is different size from that formatted in software application.	Either change paper in tray to match size formatted in application and press ONLINE to continue, or continue printing on existing paper by pressing ONLINE.

Problems with Poor Quality Printing

Longitudinal white stripes

Possible Cause	Remedy
LED head is dirty.	Clean LED head with lens cleaner or soft tissue.
Toner is low.	Change toner cartridge.
Image drum damaged.	Change image drum.

Longitudinal fading

Possible Cause	Remedy
LED head is dirty.	Clean LED head with lens cleaner or soft tissue.
Toner is low.	Change toner cartridge.
Paper is unsuitable for printer.	Use recommended paper.

Faint printing

Possible Cause	Remedy
The toner cartridge is incorrectly installed.	Reinstall the toner cartridge.
Toner is low.	Change toner cartridge.
The paper is moist.	Store paper within specified temperature and humidity levels.
Paper is unsuitable for printer.	Use recommended paper.

Fading in patches

Possible Cause	Remedy
The paper is moist.	Store paper within specified temperature and humidity levels.

Longitudinal black stripes

Possible Cause	Remedy
Image drum is damaged.	Replace image drum.
Toner is low.	Change toner cartridge.
Periodic black lateral lines or spots.	<ul style="list-style-type: none">• If the lines or spots occur at intervals of approximately 44 - 94 mm, the image drum (green tube) is damaged or dirty. If damaged, replace the image drum cartridge. If dirty, wipe the image drum gently with soft tissue. If this does not work, replace the image drum.• If the lines or spots occur at intervals of approximately 113 mm, the fuser roller is damaged. Change the fuser unit.
The image drum has been exposed to light.	Remove the image drum from the printer and store it in a dark place for several hours. If this does not work, replace the image drum.

Faint shading on unprinted sections

Possible Cause	Remedy
Paper has been affected by static electricity.	Store paper within specified temperature and humidity levels.
Paper is too thick.	Use recommended paper.
Toner is low.	Change toner cartridge.

Blurred letter edges

Possible Cause	Remedy
LED is dirty.	Clean LED with lens cleaner or soft tissue.
Cannot print desired color because toner is low.	Replace toner cartridge.
Black formation method does not match application.	Open the printer driver and set black formation to CMYK.

Miscellaneous Problems

The power is on, but the printer does not go online.

Possible Cause	Remedy
Bad connection	Switch off the printer and disconnect the power cable. Reconnect power cable and switch printer on. If this does not clear the fault, call for service.

Print processing does not start.

Possible Cause	Remedy
Printer error	Check the control panel. If an error message is displayed, correct the problem.

Print processing cancels.

Possible Cause	Remedy
The printer interface cable is faulty.	Replace the printer interface cable.
The time out setting is too short.	Reset time out to a higher value.

Printer makes a strange noise.

Possible Cause	Remedy
The printer is not horizontal.	Place the printer on a stable, level surface.
There are scraps of paper or other foreign matter inside the printer.	Check the inside of the printer and remove any such objects.
The top cover is not firmly shut.	Press the left and right sides of the top cover.

An asterisk (*) symbol appears on the display, repeatedly moving across the first line then the second.

Possible Cause	Remedy
The main board is not properly seated in the printer.	Turn the printer off, then reseal the main board and turn the printer back on again.

Printer takes a long time to start printing.

Possible Cause	Remedy
The printer has to warm up returning from power save mode.	In the printer menu settings, set power save to a higher value to increase the length of time before entering power save mode.
The image drum carries out a cleaning process to ensure print quality, which takes time.	Wait until this process has been completed.
The fuser unit adjusts temperature, which takes time.	Wait until this process has been completed.
The printer is processing data from another interface.	Wait until this data is processed.

Toner rubs off when you rub the printed surface.

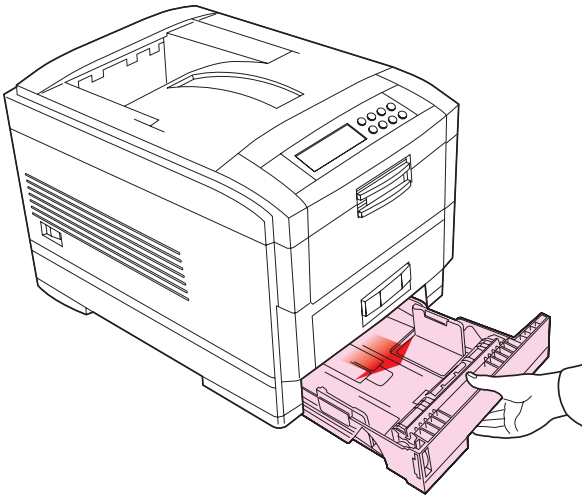
Possible Cause	Remedy
Media Weight and Media Type settings may not be appropriate.	Set the value of media weight to the next heaviest one.
Packing materials were left on the fuser when it was installed.	Careful! Fuser may be HOT! Open the top cover and check to be sure that all the packing materials were removed from the fuser. To remove the fuser see "Changing the Fuser Unit" on page 164.

Maintenance

Adding Paper

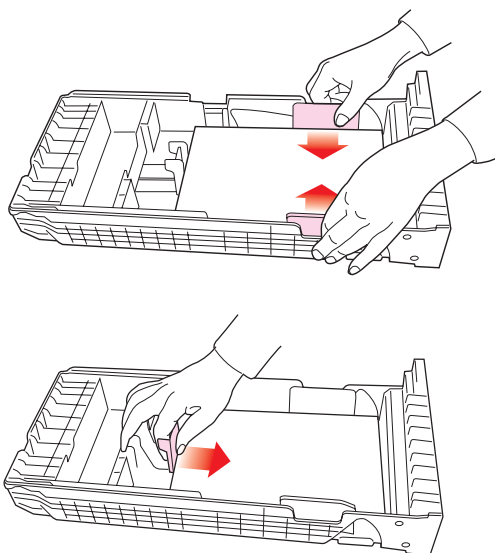
The display indicates when the number of sheets of paper in any paper tray falls below 30.

1. Remove the paper tray.



2. Remove the remaining sheets of paper.
3. Refill the tray (takes up to 530 sheets—a standard package of 20-lb [75 g/m²] paper contains 500 sheets), then replace the sheets removed in step 2 (this ensures that the oldest paper is used first, to help prevent paper jams).

4. Check that the paper guides and rear stopper are snug against the paper.



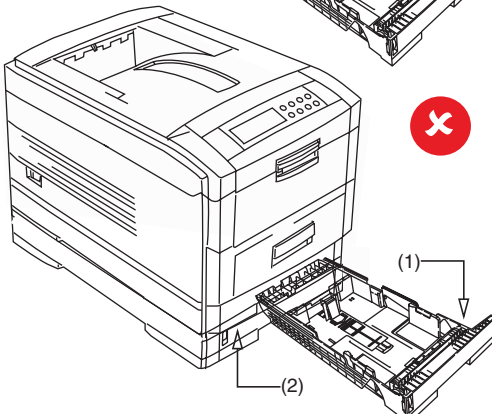
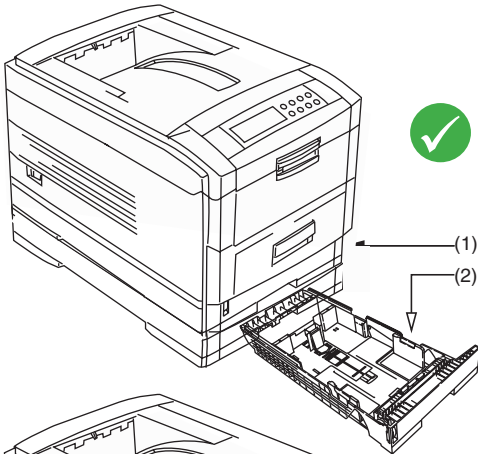
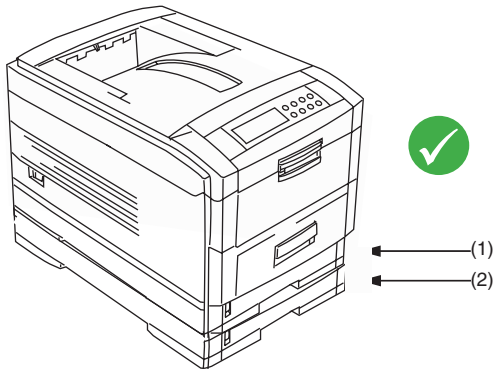
5. Close the paper tray *gently*.

Important!

To prevent jams:

- Make sure there is no space between the paper and the paper guides and rear stopper.
- Don't overfill the paper tray. Capacity depends on the type of paper and the paper weight (max. 530 sheets of 20 lb. [75 gm²] paper).
- Don't load damaged paper.
- Don't mix paper of different sizes, paper quality or thickness.
- Don't remove the paper tray during printing.

6. If installed, a lower paper tray cannot be used to print if there is no paper tray inserted above it.



Changing the Toner Cartridge

When the toner is running low, *** TONER LOW is displayed in the control panel (***) is the color name). If printing continues without replacing the toner cartridge, CHANGE *** TONER is displayed and printing is cancelled. Depending on the operating environment, print may become faint before this message is displayed. At this stage, remove the toner cartridge and check whether it is empty; if so, the toner cartridge needs to be replaced.

Cartridge life is approximately 10,000 letter-size pages at 5% print density. The first toner cartridge installed in a new image drum needs to be replaced after less than this amount because the toner cartridge has to fill a new image drum.

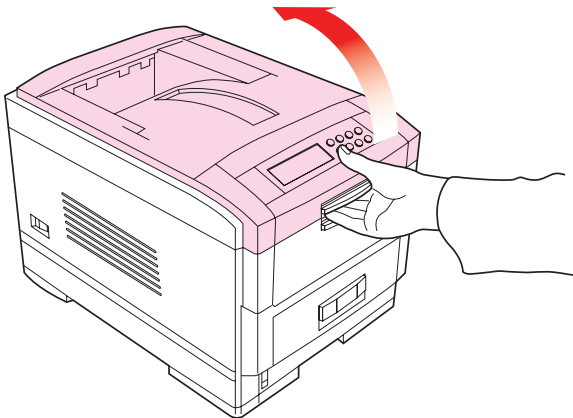
WARNING!

Take extreme care when handling toner.

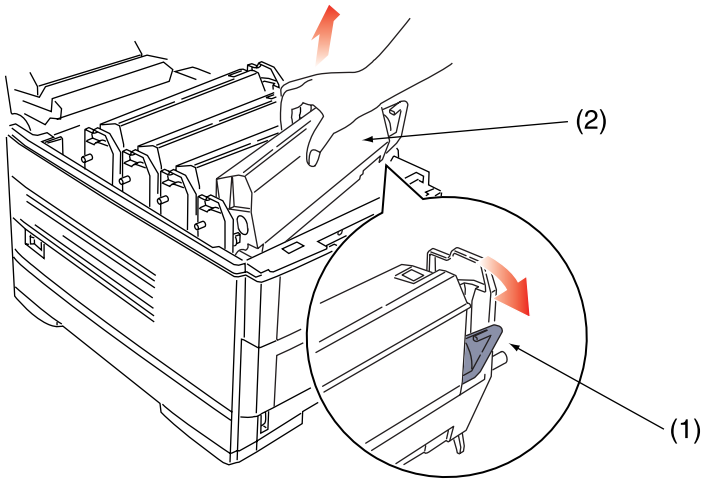
- *Toner can be harmful if inhaled, swallowed or if it gets in the eyes.*
- *Toner can also stain hands and clothing.*

See the Material Safety Data Sheets in your Warranty, Regulatory and Safety Information booklet for more information.

1. Switch off the printer and open the top cover.



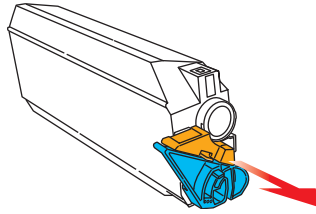
2. Check the color label of the toner cartridge to be changed.
3. Move the blue lever (1) on the right of the toner cartridge in the direction of the arrow as far as it will go then remove the toner cartridge (2), lifting the lever end of the cartridge first to disengage the locating peg on the image drum from the toner cartridge.



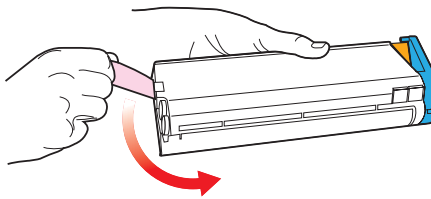
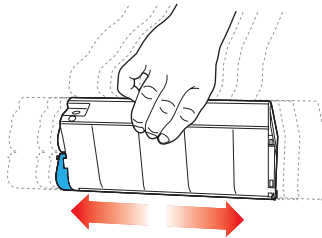
Important!

Dispose of the toner cartridge in accordance with local legislation.

4. Unpack the new toner cartridge and *remove the orange shipping clip*.



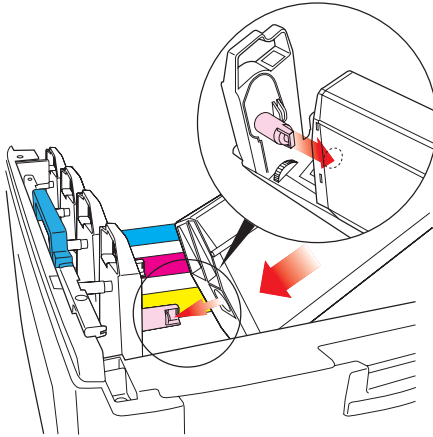
5. Shake the new toner cartridge back and forth several times. Then hold the toner cartridge horizontally and remove the tape.



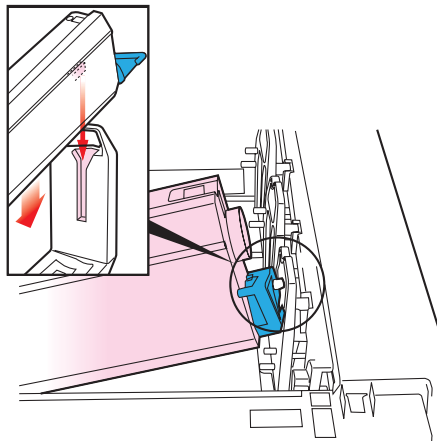
CAUTION!

Removing the tape exposes the toner release area. Do not move the blue toner release lever until the toner is fully installed in the image drum. If you move the lever at this point, toner will spill out of the cartridge.

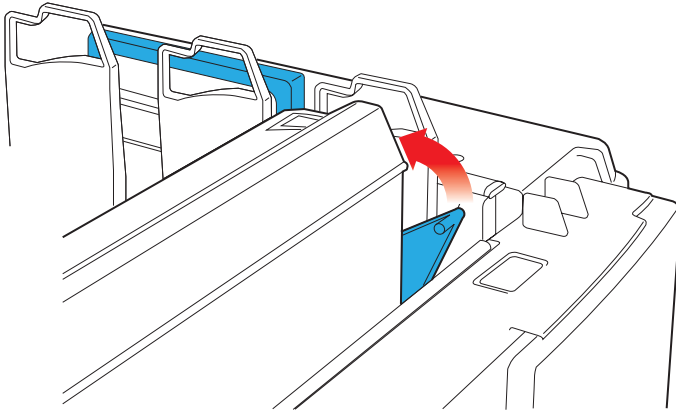
6. Insert the new toner cartridge into the image drum, left side first, engaging the drum locating peg in the hole in the toner cartridge.



7. *Gently* push the toner cartridge down, engaging the locking pin into the groove on the image drum.



8. *Gently* push the colored lever toward the back of the printer until it stops. This releases the toner into the image drum.



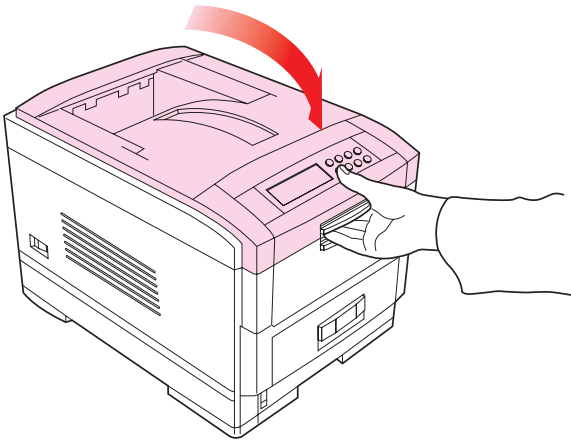
9. *Gently* wipe the LED head surface with LED lens cleaner or a soft tissue.



CAUTION

Do not use methyl alcohol or other solvents on the LED head otherwise damage to the lens surface will occur.

10. Close the top cover.



NOTE

After installing the new toner cartridge, the message on the display **TONER LOW** or **CHANGE TONER** should disappear. However, this sometimes does not disappear until printing has been carried out. If it still does not disappear, reinstall the toner cartridge.

Changing the Image Drum

When the image drum reaches the end of its product life, ***** CHANGE DRUM** is displayed in the control panel (***) is the color name). If printing continues without replacing the image drum, **CHANGE *** IMAGE DRUM** is displayed and printing is cancelled.

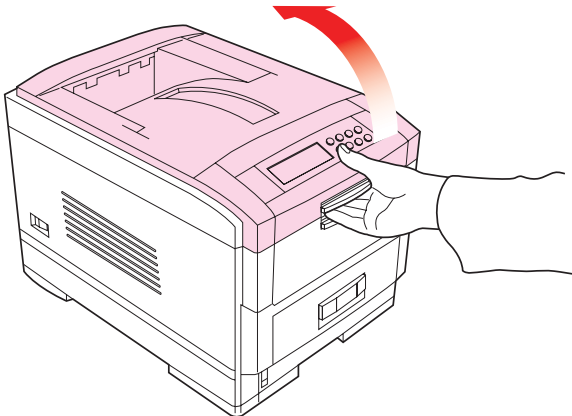
Change the toner cartridge and clean the LED head at the same time as changing the image drum.

Image drum life is approximately 23,000 sheets of letter-size media. This assumes a typical office environment where 20% of print jobs are one page emails, 30% are 3-page documents containing only words (no graphics) and 50% are print runs of 15 pages or more.

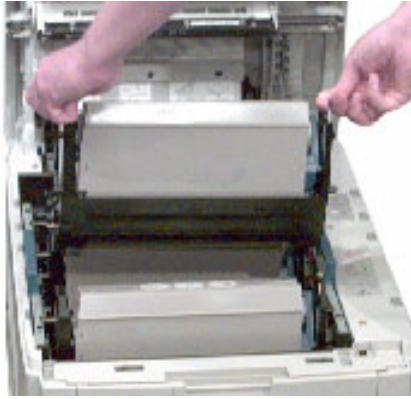
CAUTION!

- **Never expose the image drum to light for more than 5 minutes and never expose the image drum to direct sunlight.**
- **Never touch the surface of the green drum inside the image drum unit.**

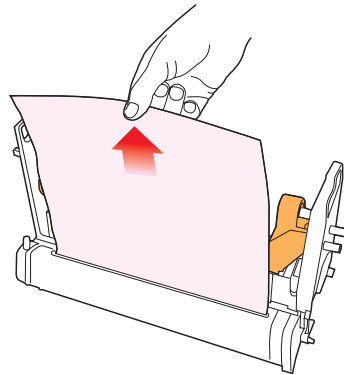
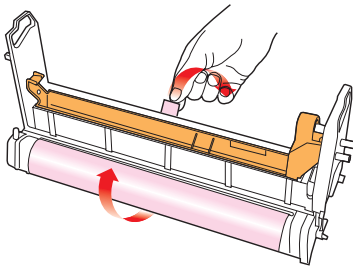
1. Switch off the printer and open the top cover.



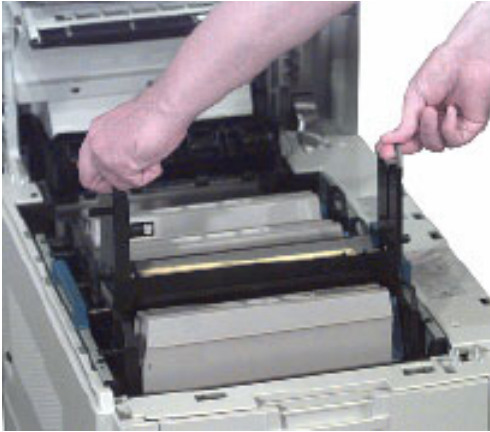
2. Remove the appropriate image drum/toner cartridge from the printer.



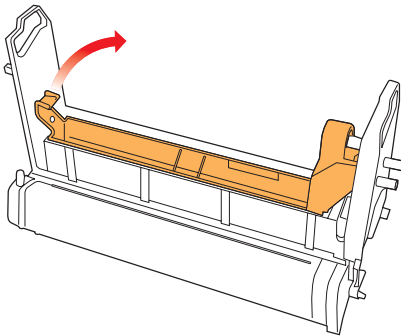
3. Make sure the replacement image drum is the correct color and remove it from the packaging.
4. Remove the protective sheet from the new image drum.



5. Install the new image drum in the printer.



6. Push the tab inwards and remove the blanking plate from the image drum.

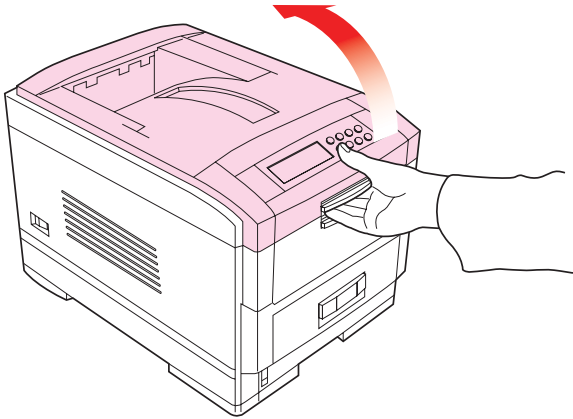


7. Install a new toner cartridge: see “Changing the Toner Cartridge” on page 151.
8. Close the top cover.

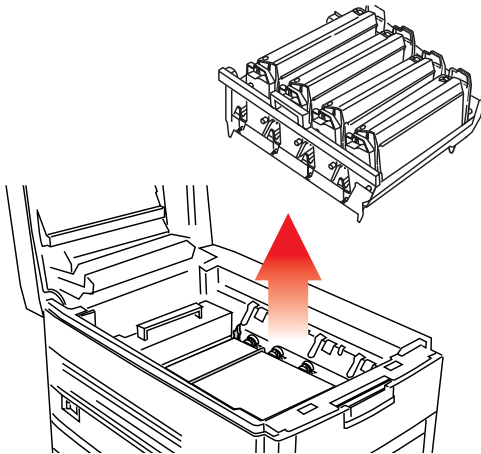
Changing the Transfer Belt

When the transfer belt reaches the end of its product life, CHANGE BELT UNIT is displayed in the control panel. Transfer belt life depends on the number of sheets per print job. When single sheets are printed, the overall transfer belt life is reduced.

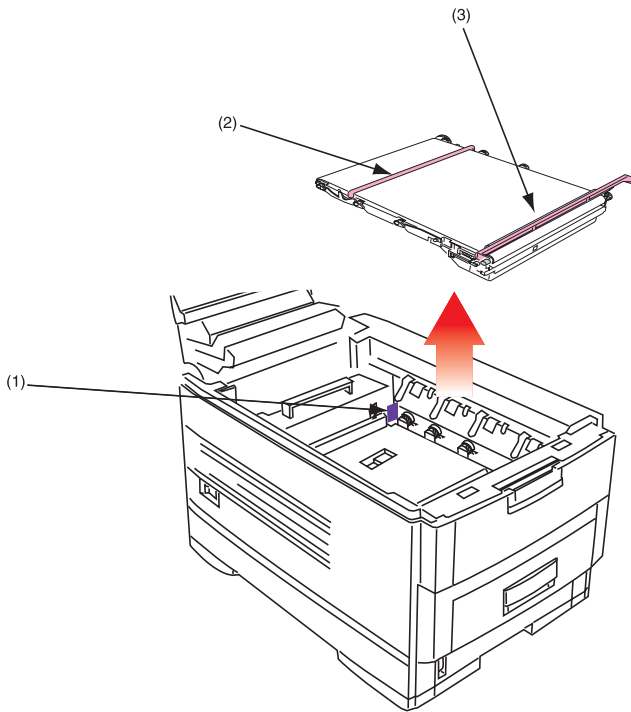
1. Switch off the printer and open the top cover.



2. Remove the cradle complete with the four image drums and toner cartridges from the printer.

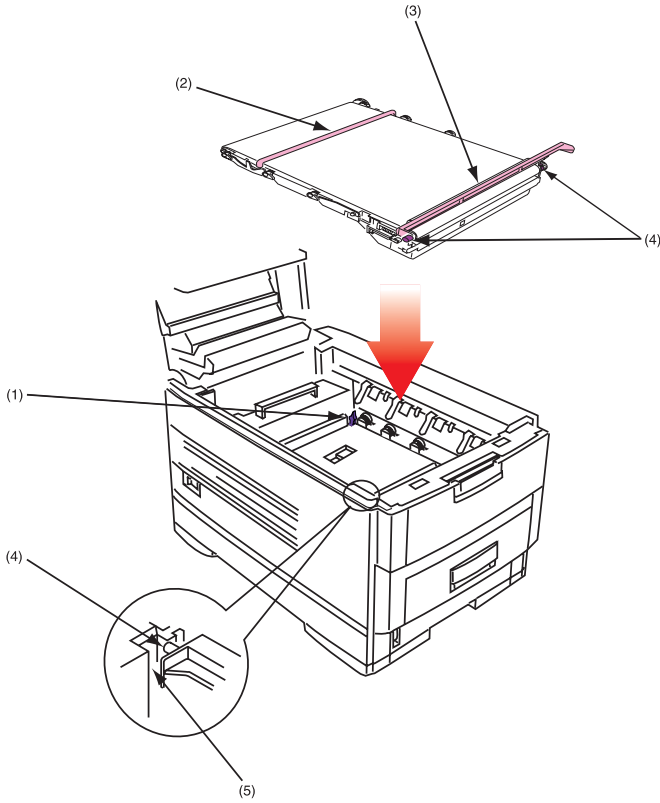


3. Press back the lock lever (1) and, using the handles (2 and 3), remove the old transfer belt from the printer.



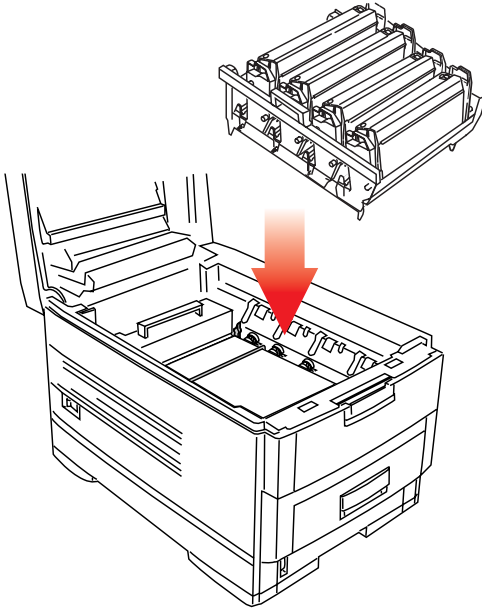
4. Remove the new transfer belt unit from its packaging.

5. Using the handles (2 and 3), align the pins (4) with the grooves (5) on the printer and insert the new transfer belt into the printer.

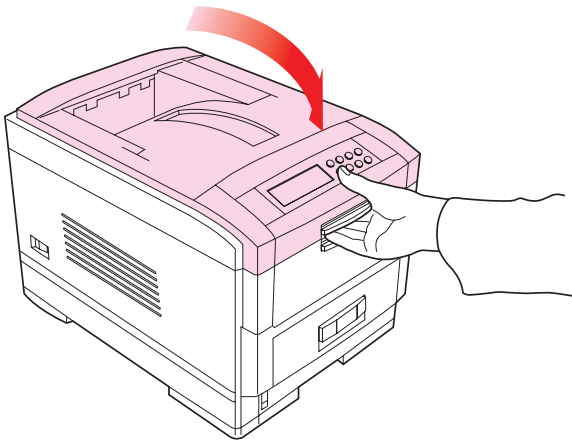


6. Move the lock lever (1) toward the front of the printer and ensure it locks the transfer belt into place.

7. Reinstall the cradle complete with the four image drums and toner cartridges in the printer.



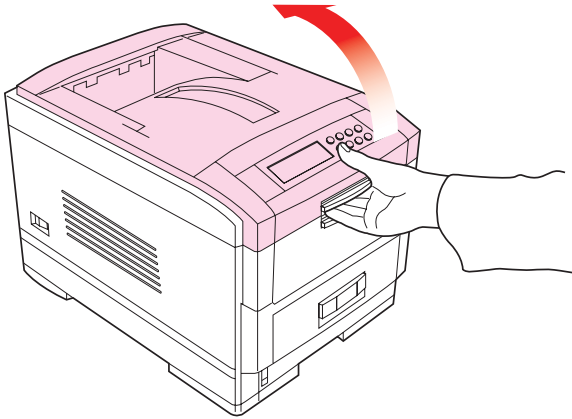
8. Close the top cover.



Changing the Fuser Unit

When the fuser unit reaches the end of its product life, **CHANGE FUSER UNIT** is displayed in the control panel. Fuser unit life is approximately 60,000 letter/A4 sheets.

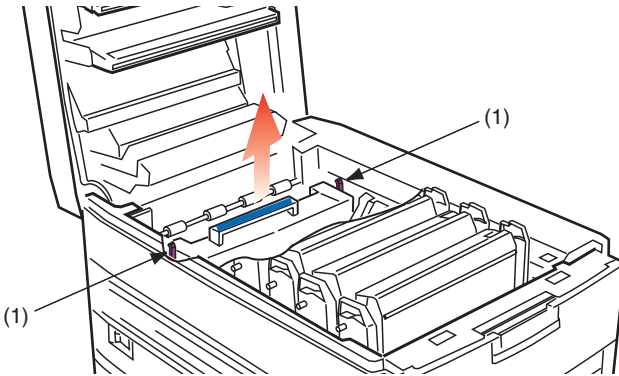
1. Switch off the printer and open the top cover.



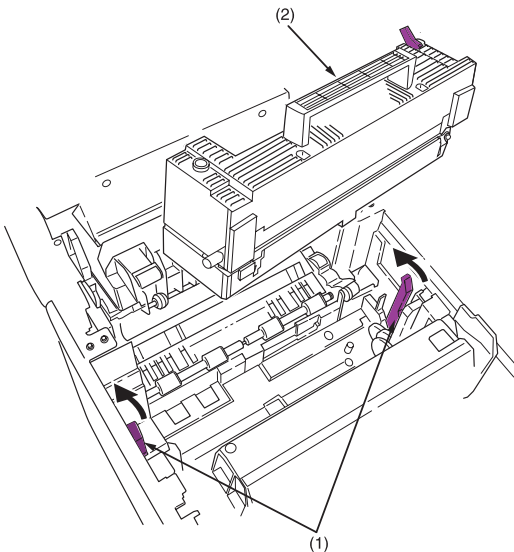
WARNING!

The fuser unit is very hot after printing. Always use the handle when lifting it.

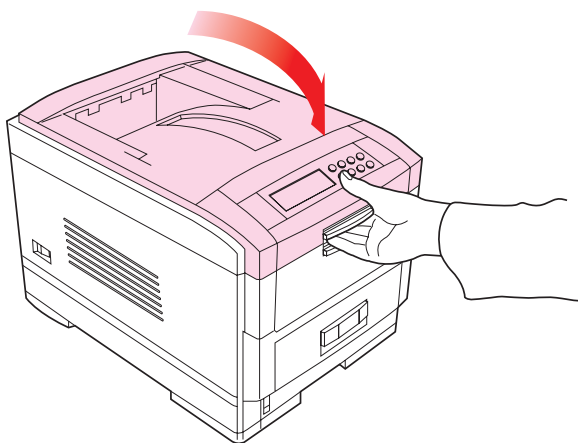
2. Move the two locking levers (1) to the rear of the machine to release the fuser unit, then *use the handle* to remove the fuser from the printer.



3. Unpack the new fuser unit and lift off the shipping tape at either end. As you remove the tape, the levers at either end of the fuser should move into the locked position.
4. Using the handle (2), install the new fuser unit into the printer. Make sure the two spring loaded locking levers (1) lock the fuser unit into place.



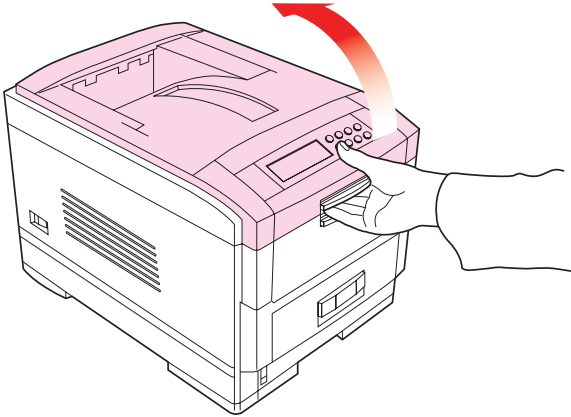
5. Close the top cover.



Cleaning the LED Heads

Clean the LED heads when printing does not come out clearly, has white line, or when text is blurred.

1. Switch off the printer and open the top cover.



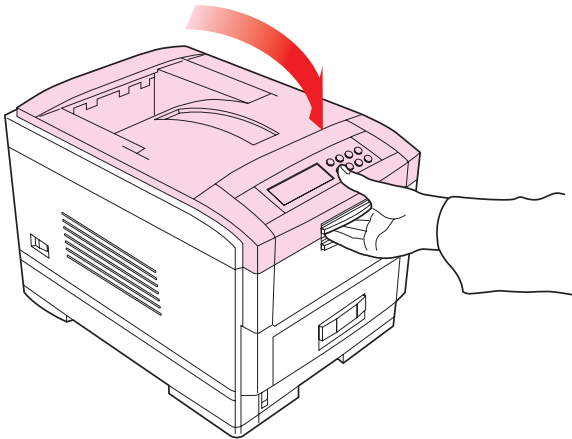
CAUTION!

Do not use methyl alcohol or other solvents on the LED head: damage to the lens surface will occur.

2. Gently wipe the LED head surface with LED lens cleaner or soft tissue.



3. Close the top cover.

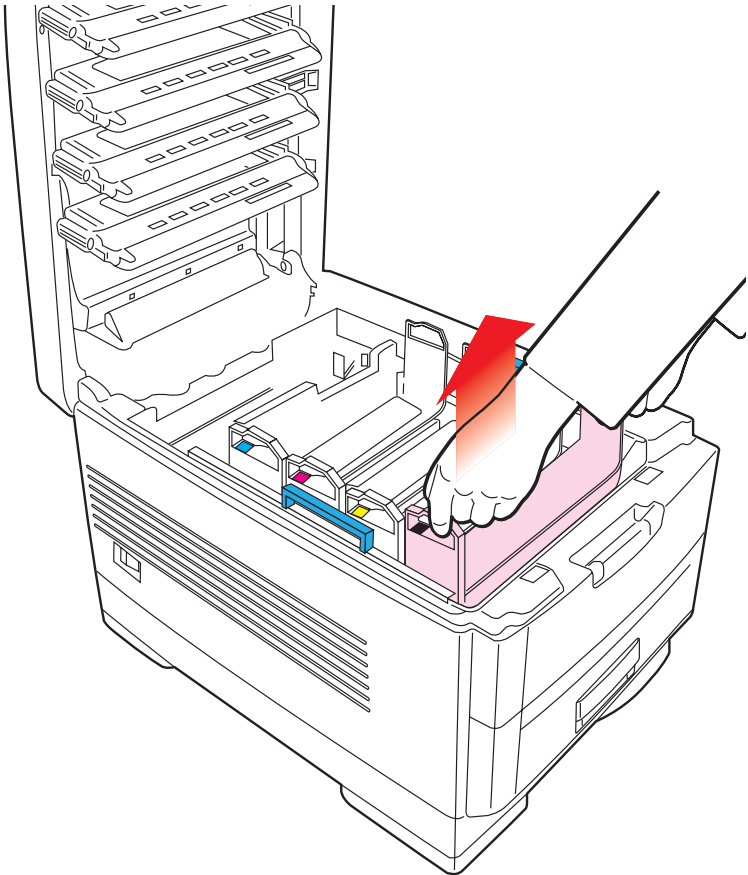


Transporting the Printer

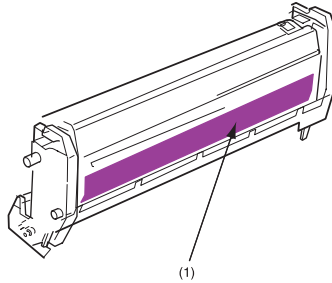
This printer is a precision machine. If it is transported without its protective packaging it may be prone to mechanical damage.

To prepare the printer for transportation:

1. Turn off the printer.
2. Disconnect the power cable and printer interface cable from the printer and remove any paper from the paper trays.
3. Open the top cover and remove the four image drums.



4. Seal the aperture on each image drum and its toner cartridge with plastic adhesive tape (1) to prevent any toner spillage during transportation.



5. Place the four image drums complete with their toner cartridges back into the printer.
6. Using the original packaging material, place the printer inside its box and seal the box.

Accessories

Depending on the configuration of your printer, you may wish to add one or more of the following options as your needs evolve:

- Hard Disk Drive: see page 171
- Duplex Unit: see page 173
- Paper Trays: see page 174
- Additional Memory: see page 176

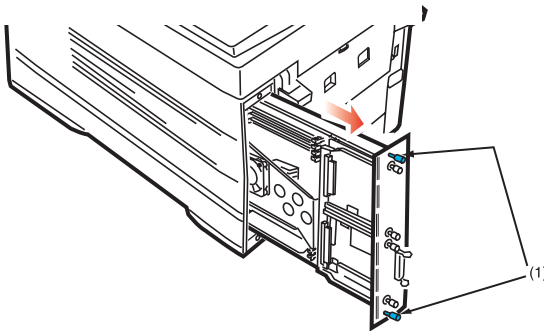
Internal Hard Disk Drive



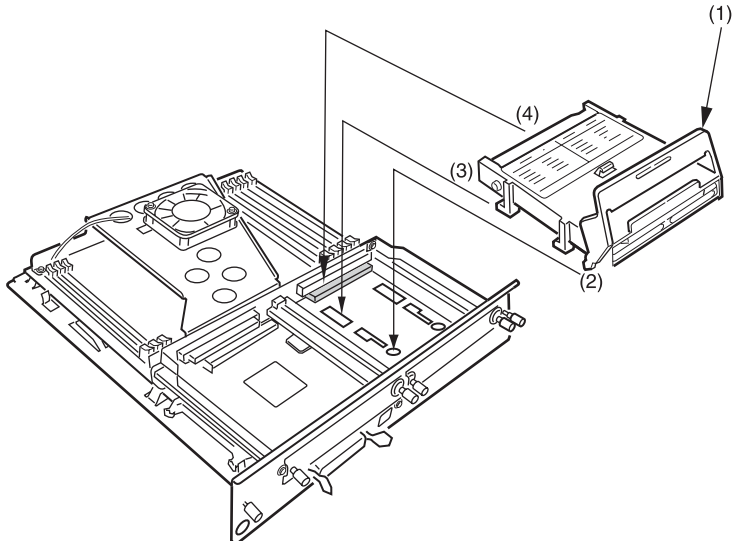
The optional internal hard disk (Sharp AR-C20HD10) is used for proof and print, password or secure printing.

Installing the Hard Disk Drive

1. Switch off the printer and disconnect the power cable and printer interface cable.
2. Loosen the two screws (1) and remove the main board.



3. Hold the hard disk drive by the locking handle (1).



4. Insert the handle locating lugs (2) and four locating feet (3) into the holes in the main board making sure the hard disk connector (4) starts to engage with the socket on the control board.
5. *Gently* push down on the locking handle (1) making sure the hard disk moves forward and fully engages with the socket.
6. Replace the main board and secure it with the two screws.
7. Connect the printer interface cable and power cable, then switch on the printer.
8. Print a Menu Map (see page 32) and check that the HDD appears at the top of the MenuMap. If it doesn't, turn the printer off then pull the main board back out and reseat the hard disk drive. Turn the printer on again and reprint the MenuMap.

NOTE

When initializing the hard disk, any fonts or print jobs that have been acknowledged will be erased.

9. Engage the Hard Disk Drive in the printer driver(s): see the instructions supplied with your Hard Disk Drive.

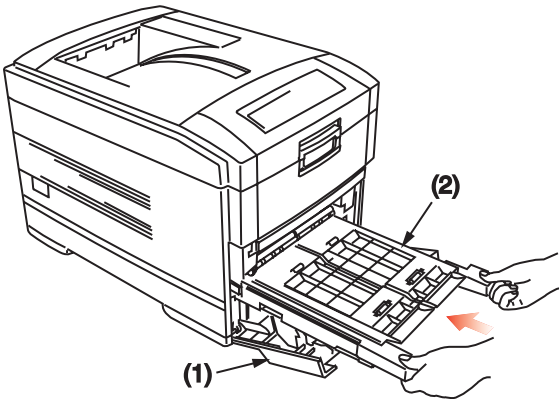
Duplex Unit



The Duplex Unit (Sharp AR-C20ADU) permits printing on both sides of the paper.

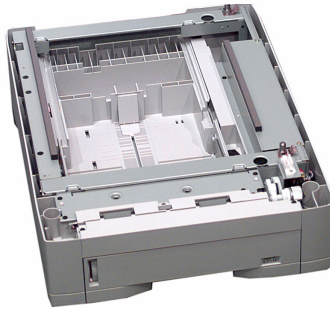
Installing the Duplex Unit

1. Switch off the printer and disconnect the power cable.



2. Open the front cover (1).
3. Insert the duplex unit (2) into the printer engaging the sides of the duplex unit in the slots in the printer.
4. *Gently* slide the duplex unit (2) fully into the printer.
5. Close the front cover (1).
6. Connect the power cable and switch the printer on.
7. The printer will automatically configure to include this option.
8. Engage the Duplex Unit in the printer driver(s): see the instructions supplied with your Duplex Unit.

Additional Paper Trays



Two additional paper trays (Sharp AR-C20PFU) can be installed, providing a maximum total paper capacity of approximately 1690 sheets, including the Multi-Purpose Tray.

Installing Additional Paper Trays

1. Switch off the printer and disconnect the power cable and printer interface cable.

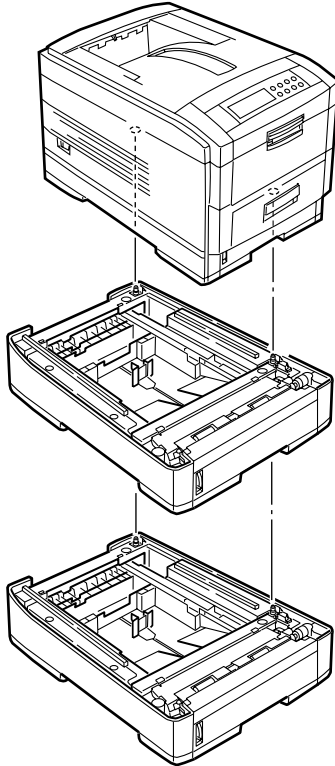
WARNING!

The printer weighs 106 lbs. (48 kg). 2 people are required to lift the printer safely and prevent any personal injury.

NOTE

If installing both additional paper trays, put the two additional paper trays together as one unit first, then install the printer on top of the two additional paper trays.

2. Lower the printer *gently* on to the additional paper tray aligning the holes and connection socket on the base of the printer with the locating pegs and connector on the additional paper tray unit.



3. Connect the printer interface cable and power cable, then switch on the printer.
4. Print a Menu Map (see “Printing the MenuMap” on page 32) and check that TRAY 2 (and TRAY 3 if installed) appear under MEDIA MENU.
5. The printer will automatically configure to include this option.
6. Engage the additional trays in the printer driver(s): see the instructions supplied with your paper tray.

Additional Memory

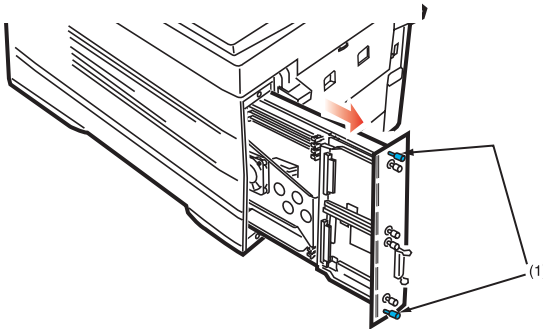
- Installing additional memory is recommended if carrying out duplex printing or if error messages appear when printing complex data.
- Also used for graphic intensive applications on Networks.
- Additional memory is available in 64Mb, 128Mb, and 256Mb modules. For more information see your authorized Sharp dealer.

Installing Additional Memory

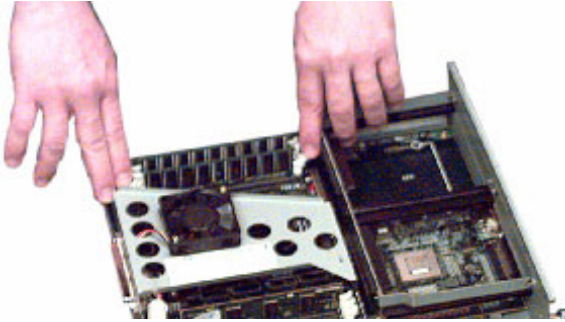
NOTE

If the maximum amount of memory is being installed in the printer (three 256 MB modules), the memory modules that were originally installed must be removed.

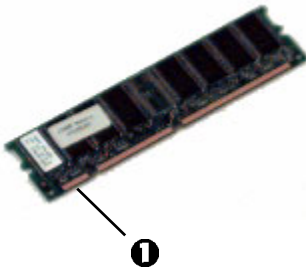
1. Switch off the printer and disconnect the power cable and printer interface cable.
2. Loosen the two screws (1) and remove the main board.



- 3. Insert the memory modules the slots as follows:**
- a. Push out the white tabs at either end of the socket.**



- b. Align the module with the narrow strip (1) on its metallic contact edge to the right (toward the slot identifier numbers) of the control board.**



- c. Carefully insert the module in the socket, placing the ends into the slot in the lock tabs. Press down firmly, until you feel the board engage the connector, then make sure the white tabs come up to lock the module in place.**



4. Replace the main board and secure it with the two screws.
5. Reconnect the printer interface cable and power cable, then switch on the printer.
6. Print a MenuMap (see page 32) and check that the Total Memory Size shown at the top of the MenuMap matches the memory now installed in the printer. If it doesn't, *turn the printer off* and pull out the main board and check to be sure that the modules are all *firmly seated* in their connectors.

Specifications

Print method.	LED exposed light source electronic photographic memory
Resolution	600 x 1200 dpi
Colors	Cyan, magenta, yellow, black (CMYK)
CPU	Power PC 750 processor, 32 bit RISC CPU, 450 MHz, 64 bit
Memory	64 Mb standard <ul style="list-style-type: none">• 128 Mb required for the optional Duplex unit• Up to 1 Gb max with optional memory modules
Print language	PostScript3, PCL5c
Internal font	PostScript 3, PCL5c fonts
Print Start	First print time: 10 secs (mono), 15 secs (color) Warm up time: 90 secs
Parallel Interface	IEEE Std 1284-1994 parallel <i>Connection:</i> 36-pin receptacle <i>Cable:</i> IEEE Std 1284-1994 compatible cable of up to 1.8 meters <i>Transmission Mode:</i> Compatible, Nibble mode ECP <i>Interface Level:</i> <ul style="list-style-type: none">• Low +0.0 – 0.8VHigh+2.4 – 5.0V
Universal Serial Bus (USB) interface	USB specification Version 1.1 <i>Connection:</i> USB Type B <i>Cable:</i> USB specification Version 1.1 cable (shielded) <i>Transmission Mode:</i> Full speed (12 Mbps + 0.25% maximum)
Power control	Self-powered device

Network	100BASE-TX/10BASE-T (option)
Print speed in pages per minute (ppm) [Print speed varies with paper size, media weight and paper feed.]	<ul style="list-style-type: none"> • Color: 20 ppm • Black & White: 24 ppm • Transparencies, Color: 12 ppm • Duplex Printing, Color: 13 ppm
Media size Trays 1, 2, 3	Letter, Legal-14, Legal-13.5, Legal-13, Executive A4, A5, B5 A6: <i>Tray 1 only</i>
Media size MP tray	Letter, Legal-14, Legal-13.5, Legal-13, Executive A4, A5, A6, B5 Envelopes: C5, DL, Com-9, Com-10, Monarch Custom (up to 1200 mm length)
Media weight	<i>Trays 1 to 3:</i> 20 to 47 lb. US Bond (75 to 177 g/m ²) <i>Multi-purpose tray:</i> 17 to 54 lb. US Bond—up to 113 lb. Index—(64 to 203 g/m ²) <i>Duplex unit:</i> 20 to 28-lb. US Bond (75 to 105 g/m ²)
Paper capacity (depending on paper weight)	Paper tray: 530 sheets approx. Manual feed: 100 sheets approx.
Exit capacity (depending on paper weight)	Face up: 100 sheets approx. Face down: 500 sheets approx.
Print margin	¼-inch (6.4 mm) minimum
Print accuracy	<i>Start:</i> ±2 m <i>Paper skew:</i> ±1 mm per 100 mm <i>Image expansion/compression:</i> ±1 mm per 100 mm
Startup time	Less than 3 min. from powering up (25°C)
Power supply	120 (115-127) volts AC, 60 Hz ± 2 Hz

Power consumption

Operating: 1350 max.; 500 W average (25°C)
Standby: 1200 max.; 150 W average (25°C)
Power Saving: 45 W max.

Operating environment

Operating:

- 50 to 90°F (10 to 32 °C)
- 20 to 80% RH
maximum wet bulb temperature 77°C (25°C)

For maximum print quality

- 62.6 to 80.6°F (17 to 27 °C)
- 50 to 70% RH

Off

- 32 to 110°F (0 to 43 °C)
- 10 to 90% RH

Storage

- -14 to 110°F (-10 to 43°C)
- 10 to 90% RH

Product life

5 years or 600,000 sheets

Dimensions

Width: 16.9 inches (430 mm)
Depth: 24.4 inches (620 mm)
Height: 16.9 inches (430 mm)

Weight

106 lbs. (48 kg) not including optional accessories and paper

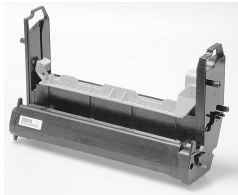
Consumables

Toner



Description	Order No.
Black Toner	AR-C20TBU
Cyan Toner	AR-C20TCU
Magenta Toner.....	AR-C20TMU
Yellow Toner	AR-C20TYU

Drums



Description	Order No.
Black Image Drum	AR-C20BDR
Cyan Image Drum	AR-C20CDR
Magenta Image Drum	AR-C20MDR
Yellow Image Drum.....	AR-C20YDR

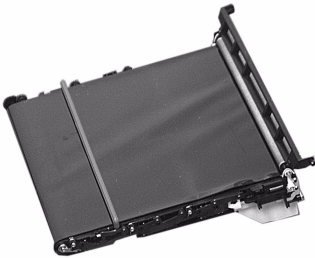
Fuser Unit



Description **Order No.**

Fuser Unit, 120VAR-C20FU1

Transfer Belt



Description **Order No.**

Transfer beltAR-C20TB1

Factory Default Settings

Print Menu

Item	Factory Default Setting
COPIES	1
DUPLEX ^a	OFF
BINDING	LONG EDGE
PAPER FEED	TRAY1
AUTO TRAY SWITCH	ON
TRAY SEQUENCE	DOWN
MP TRAY USAGE	FEED WHEN MISMATCHING
MEDIA CHECK	ENABLE
TRANSPARENCY DETECT	AUTO
RESOLUTION	600 X 1200 dpi
TONER SAVE MODE	OFF
MONO-PRINT SPEED	AUTO
ORIENTATION	PORTRAIT
LINE PER PAGE	60
EDIT SIZE	CASSETTE SIZE

a. Appears only when the optional Duplex Unit is installed.

Media Menu

Item	Factory Default Setting
TRAY1 MEDIATYPE:	PLAIN
TRAY1 MEDIAWEIGHT	AUTO
TRAY2 MEDIATYPE ^a	PLAIN
TRAY2 MEDIAWEIGHT ^a	AUTO
TRAY3 MEDIATYPE ^b	PLAIN
TRAY3 MEDIAWEIGHT ^b	AUTO
MP TRAY PAPERSIZE	LETTER
MP TRAY MEDIA	PLAIN
MP TRAY MEDIAWEIGHT	AUTO
UNIT OF MEASURE	INCH
X DIMENSION	8.5 INCH
Y DIMENSION	11 INCH

- a. Appears only if optional Paper Tray is installed.
- b. Appears only if two optional Paper Trays are installed.

Color Menu

Item	Factory Default Setting
AUTO DENSITY MODE	AUTO
ADJUST DENSITY	[EXECUTE]
COLOR TUNING	[PRINT PATTERN]
CYAN HIGH-LIGHT	0
CYAN MID-TONE	0
CAN DARK	0
MAGENTA HIGH-LIGHT	0
MAGENTA MID-TONE	0
MAGENTA DARK	0
YELLOW HIGH-LIGHT	0
YELLOW MID-TONE	0
YELLOW DARK	0
BLACK HIGH-LIGHT	0
BLACK MID-TONE	0
BLACK DARK	0
CYAN DARKNESS	0
MAGENTA DARKNESS	0
YELLOW DARKNESS	0
BLACK DARKNESS	0
ADJUST REGISTRATION	[EXECUTE]
CYAN REG FINE ADJUST	0
MAGENTA REG FINE ADJUST	0
YELLOW REG FINE ADJUST	0
INK SIMULATION	OFF
INK LIMIT	DARK
CMY100% density	DISABLE

System Config Menu

Item	Factory Default Setting
POWER SAVE DELAY TIME	60 mins.
USB PS-PROTOCOL	RAW
NETWORK PS-PROTOCOL	RAW
PERSONALITY	AUTO EMULATION
CLEARABLE WARNING	ON
AUTO CONTINUE	OFF
MANUAL TIMEOUT	60 sec.
WAIT TIMEOUT	40 sec.
LOW TONER	CONTINUE
JAM RECOVERY	ON
ERROR REPORT	OFF
LANGUAGE	ENGLISH

PCL Emulation Menu (Windows Only)

Item	Factory Default Setting
FONT SOURCE	RESIDENT
FONT No.	I000
FONT PITCH	10.00 cpi
FONT HEIGHT	12.00 point
SYMBOL SET	PC-8
A4 PRINT WIDTH	78 column
WHITE PAGE SKIP	OFF
CR FUNCTUION	CR
LF FUNCTION	LF
PRINT MARGIN	NORMAL
TRUE BLACK	OFF
PEN WIDTH ADJUST	ON

PPR Emulation Menu (Windows Only)

Item	Factory Default Setting
CHARACTER PITCH	10 cpi
FONT CONDENSE	10 cpi to 12 cpi
CHARACTER SET	SET - 2
SYMBOL SET	IBM-437
LETTER 0 STYLE	DISABLE
ZERO CHARACTER	NORMAL
LINE PITCH	6 lpi
WHITE PAGE SKIP	OFF
CR FUNCTUION	CR
LF FUNCTION	LR
LINE LENGTH	80 column
FORM LENGTH	11 inches
TOF POSITION	0.0 inch
LEFT MARGIN	0.0 inch
FIT TO LETTER	ENABLE
TEXT HEIGHT	SAME

FX Emulation Menu (Windows Only)

Item	Factory Default Setting
CHARACTER PITCH	10 cpi
CHARACTER SET	SET - 2
SYMBOL SET	IBM-437
LETTER 0 STYLE	DISABLE
ZERO CHARACTER	NORMAL
LINE PITCH	6 lpi
WHITE PAGE SKIP	OFF
CR FUNCTUION	CR
LINE LENGTH	80 column
FORM LENGTH	11 inch
TOF POSITION	0.0 inch
LEFT MARGIN	0.0 inch
FIT TO LETTER	ENABLE

Parallel Menu (Windows Only)

Item	Factory Default Setting
PARALLEL	ENABLE
BI-DIRECTION	ENABLE
ECP	ENABLE
ACK WIDTH	NARROW
ACK/BUSY TIMING	ACK-IN-BUSY
I-PRIME	DISABLE
OFFLINE RECEIVE	DISABLE

USB Menu

Item	Factory Default Setting
USB	ENABLE
SOFT RESET	DISABLE
OFFLINE RECEIVE	DISABLE

Network Menu

Item	Factory Default Setting
TCP/IP	ENABLE
NETWARE	ENABLE
ETHERTALK	ENABLE
NETBEUI	ENABLE
FRAME TYPE	AUTO
DHCP/BOOTP	ENABLE
RARP	DISABLE
IP ADDRESS	0.0.0.0
SUBNET MASK	0.0.0.0
GATEWAY ADDRESS	0.0.0.0
PRINT SETTINGS	OFF
INITIALIZE	OFF

Memory Menu

Item	Factory Default Setting
RECEIVE BUFF SIZE	AUTO
RESOURCE SAVE	OFF
FLASH INITIALIZE	EXECUTE
PS FLASH RESIZE	0.5MB

Disk Maintenance Menu

Applies only when optional Hard Disk Drive is installed.

Item	Factory Default Setting
PARTITION #1	PCL
PARTITION #2	COMMON
PARTITION #3	PS

System Adjust Menu

Item	Factory Default Setting
X ADJUST	0.0 mm
Y ADJUST	0.0 mm
DUPLEX X ADJUST ^a	0.0 mm
DUPLEX Y ADJUST ^a	0.0 mm
TRAY1 LEGAL14 PAPER	LEGAL 14
TRAY2 LEGAL14 PAPER ^b	LEGAL 14
TRAY3 LEGAL14 PAPER ^c	LEGAL 14
PCL TRAY2 ID# ^a	5
PCL TRAY3 ID# ^b	20
PCL MP TRAY ID#	4
HEX DUMP	EXECUTE

- Appears only if optional Duplex Unit is installed.
- Appears only if optional Paper Tray is installed.
- Appears only if two optional Paper Trays are installed.

Maintenance Menu

Item	Factory Default Setting
EEPROM RESET	EXECUTE
POWER SAVE	ENABLE
PAPER BLACK SETTING	0
PAPER COLOR SETTING	0
TRANSPR BLACK SETTING	0
TRANSPR COLOR SETTING	0

Index

A

- Accessories
 - activating in driver 75, 76, 77, 78
- Additional paper trays174

B

- Block device menu67

C

- Collating129
- Color matching methods . .82, 116
- Color menu45, 67
- Color print matching79, 112
- Color swatch utility106
- Components12
- Connection
 - Power cable28
- Control panel29

D

- Display language31
- Driver options118
- Duplex printing100, 128
- Duplex unit173

E

- Envelopes37
- Error messages131
- EtherTalk net utility108

F

- Fonts
 - downloader utility105
- Fuser unit164
- FX emulation menu56

H

- Hard disk171

I

- Image drum157
- Information menu41

J

- Jams, paper134

L

- Labels, recommended37
- LED head167
- Location11

M

- Mac OS 8.6-9.2.2
 - color option84
 - job option89
 - job type92
 - operation79
 - Utilities103
 - color swatch utility106
 - fonts downloader105
 - for ethertalk108
 - installing104
- Macintosh OS 10.1.5
 - Operation112
- Maintenance
 - Cleaning LED head167
 - Fuser unit164
 - Image drum157
 - menu63
 - Toner cartridge151
 - Transfer belt160
- Manual feed27
- Media
 - recommendations36
- Media Menu44
- Memory menu60
- Menu settings31, 41

N

- Net utility for EtherTalk108
- Network
 - menu59
- N-up printing127

O

- OP menu65
- Options
 - Additional paper trays174
 - Duplex unit173
 - Internal hard disk171

P

- Paper
 - Feed, selecting33
 - Loading23
 - Manual feed27
 - Sizes34
 - Types36
- Paper feed33
- Paper jams134
- Parallel menu58
- PCL emulation menu50
- Peak power control menu67
- Power cable28
- PPD file, changing74
- PPR emulation menu53
- Print Jobs Menu41
- Print menu42
- Printer
 - Changing display language . . .31
 - Components12
 - Location11
 - Printing the MenuMap32
 - Unpacking10
- Printer settings
 - Changing40
 - Confirming40
 - List of settings41
 - Printing menu list32
- Printing
 - collating129

- Duplex100
- duplex128
- multiple pages on one sheet .127
- Problem solving
 - miscellaneous144
 - paper feed problems141
 - poor quality printing144
 - problems printing142
- Protective sheet removal15

S

- Setting up
 - Power cable28
 - Protective sheet removal15
 - Toner cartridge installation . .19
- Shutdown menu42
- Status messages131
- System adjust menu62
- System configuration menu . . .48

T

- Test print menu42
- Toner cartridge151
- Toner cartridge installation 19, 151
- Transfer belt160
- Transporting169
- Troubleshooting
 - Miscellaneous problems146
 - paper feed problems141
 - paper jams134
 - poor quality printing144
 - problems printing142

U

- Unpacking10
- Usage menu64
- USB
 - menu59
- User menu settings41
- Utilities
 - Mac OS 8.6-9.2.2103